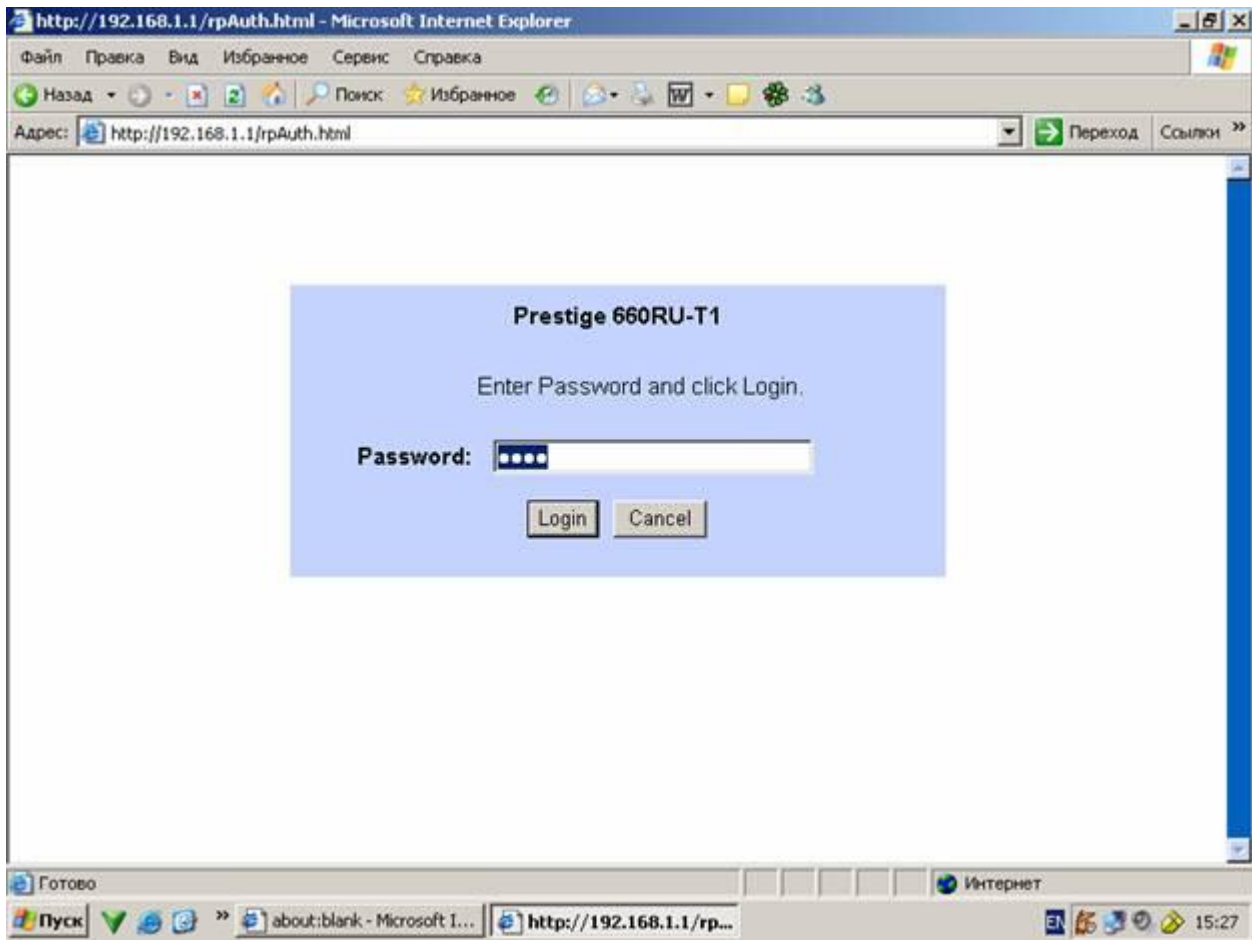
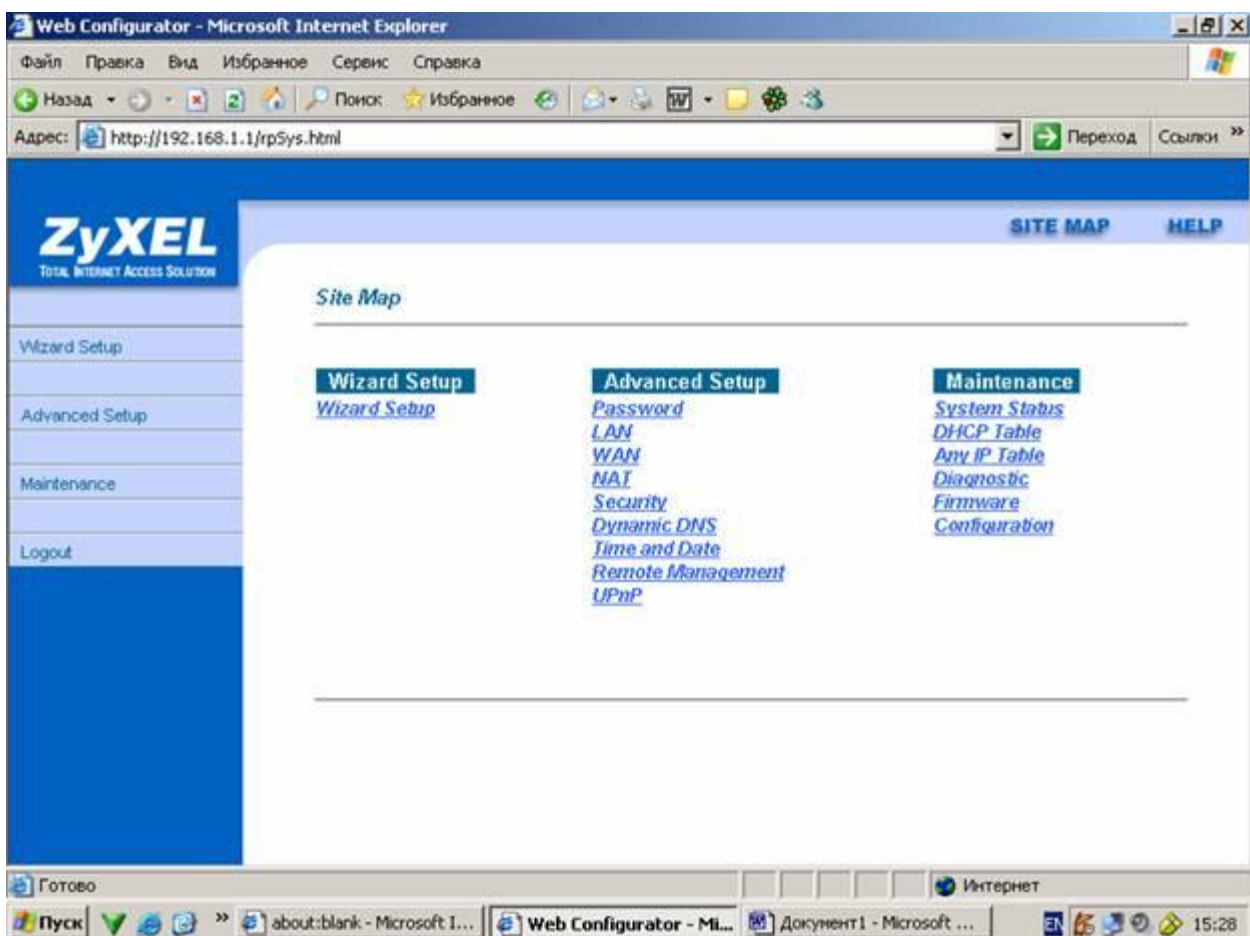
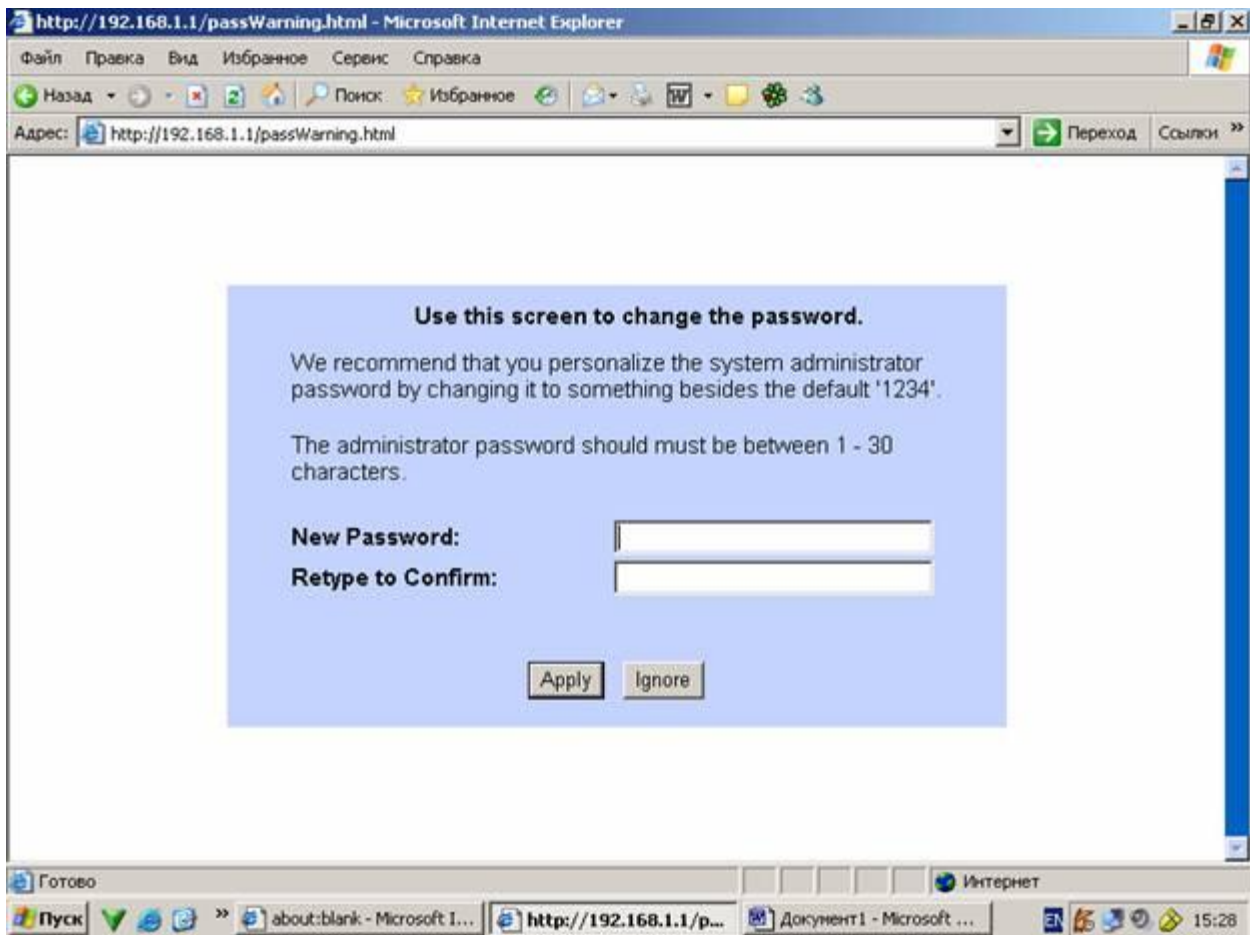
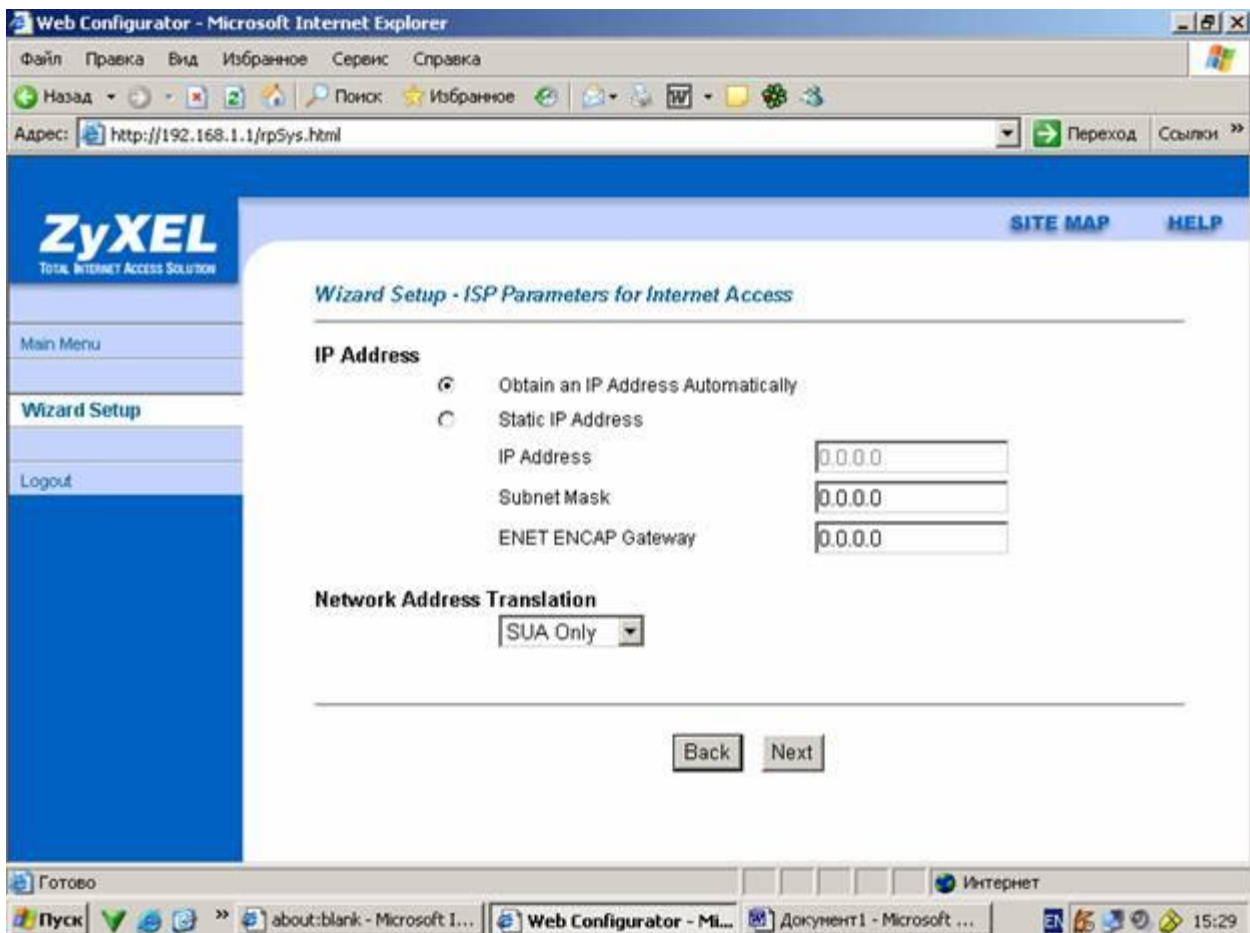
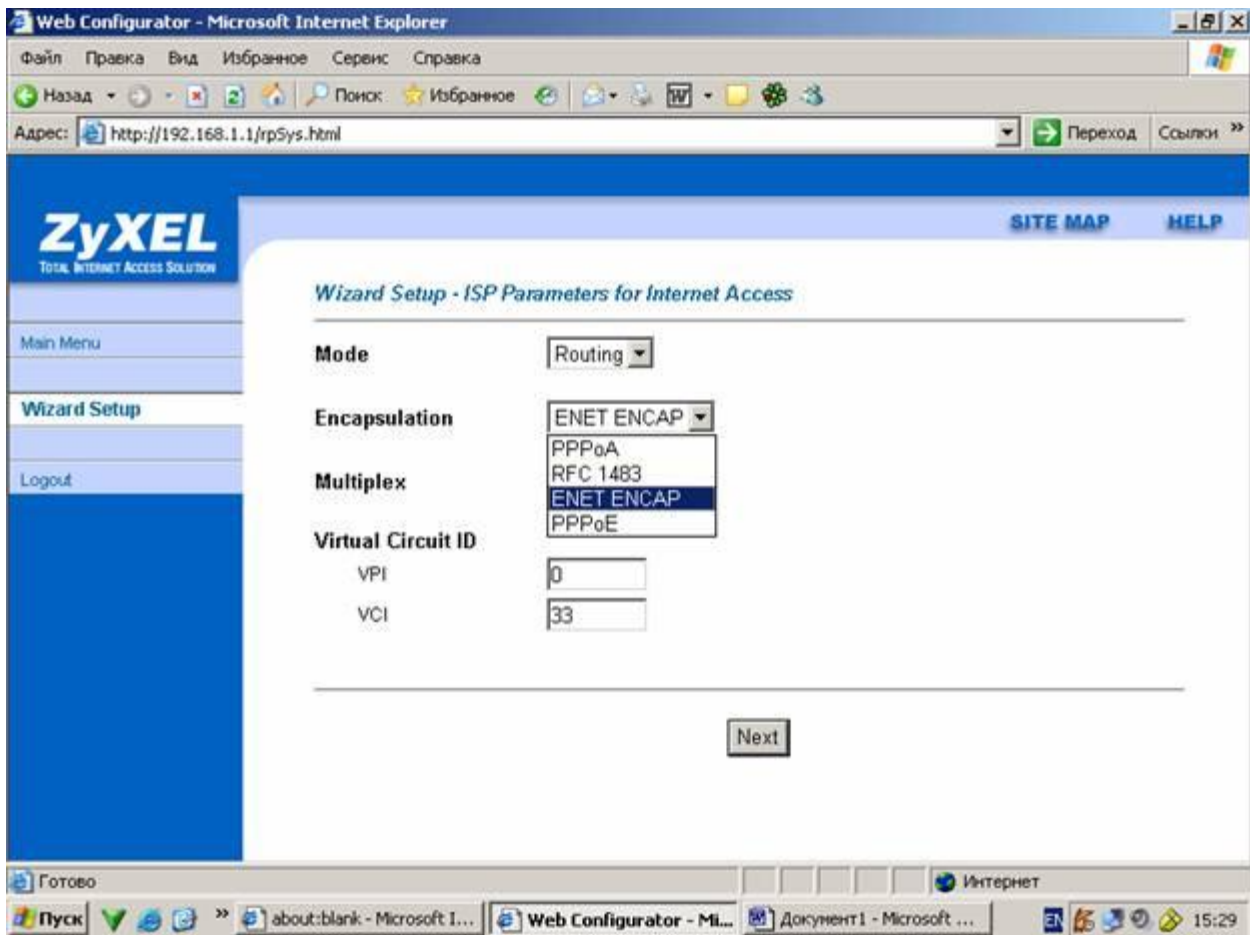
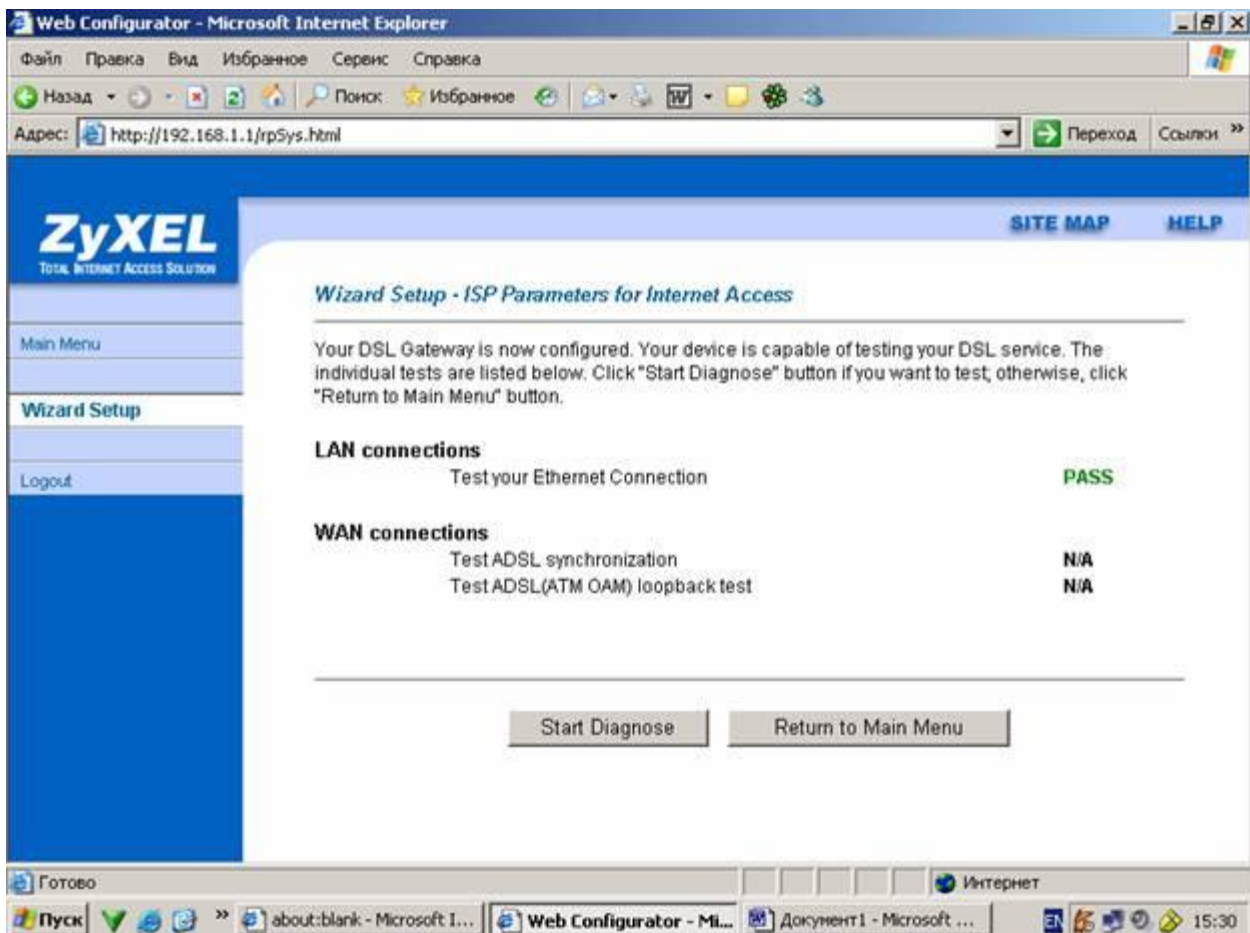
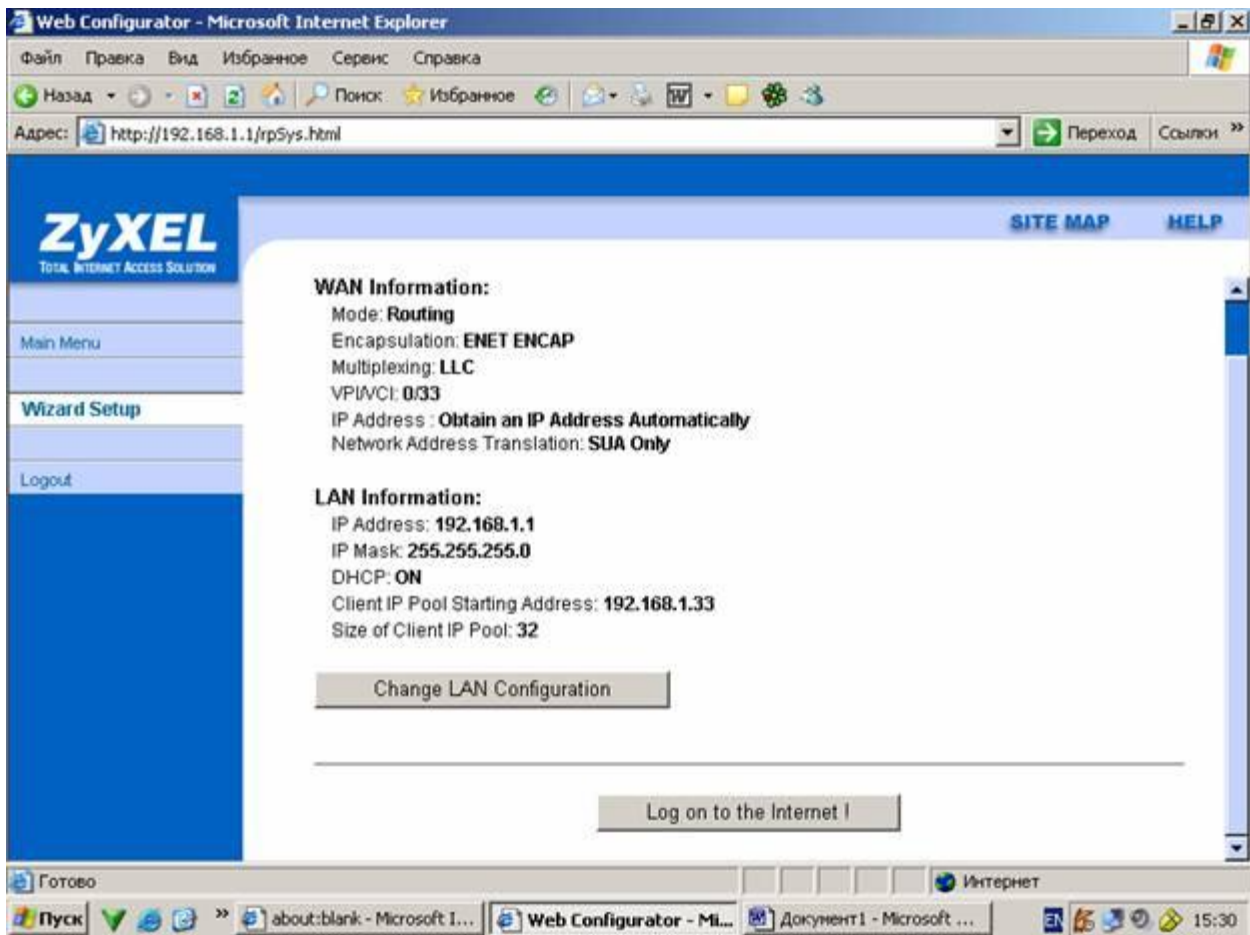


600E Router









Web Configurator - Microsoft Internet Explorer

Файл Правка Вид Избранное Сервис Справка

Назад Поиск Избранное

Адрес: <http://192.168.1.1/rpSys.html> Переход Ссылки

ZyXEL
TOTAL INTERNET ACCESS SOLUTION

SITE MAP HELP

Site Map

- Wizard Setup**
[Wizard Setup](#)
- Advanced Setup**
[Password](#)
[LAN](#)
[WAN](#)
[NAT](#)
[Security](#)
[Dynamic DNS](#)
[Time and Date](#)
[Remote Management](#)
[UPnP](#)
- Maintenance**
[System Status](#)
[DHCP Table](#)
[Any IP Table](#)
[Diagnostic](#)
[Firmware](#)
[Configuration](#)

Main Menu

Maintenance

- System Status
- DHCP Table
- Any IP Table
- Diagnostic
- Firmware
- Configuration

Logout

Пуск about:blank - Microsoft I... Web Configurator - M... prestige600 - Microsoft ... 15:34

Web Configurator - Microsoft Internet Explorer

Файл Правка Вид Избранное Сервис Справка

Назад Поиск Избранное

Адрес: <http://192.168.1.1/rpSys.html> Переход Ссылки

ZyXEL
TOTAL INTERNET ACCESS SOLUTION

SITE MAP HELP

System Status

System Status

System Name: P660RU-T1
ZyNOS FW Version: V3.40(ST.4) | 8/26/2005
DSL FW Version: DMT FwVer: 3.1.0.3_A_TC, HwVer: T14F7_0.0
Standard: ADSL_G_dmt

WAN Information

IP Address: 86.106.217.164
IP Subnet Mask: 255.255.255.0
Default Gateway: 86.106.217.1
VPI/VCI: 0/ 33

Main Menu

Maintenance

- System Status
- DHCP Table
- Any IP Table
- Diagnostic
- Firmware
- Configuration

Logout

Готово about:blank - Microsoft I... Web Configurator - M... prestige600 - Microsoft ... 15:35

```
C:\ Telnet 192.168.1.1
Copyright (c) 1994 - 2003 ZyXEL Communications Corp.
OMNI ADSL LAN EE(Annex A) Main Menu

Getting Started
1. General Setup
3. LAN Setup
4. Internet Access Setup

Advanced Applications
11. Remote Node Setup
12. Static Routing Setup
15. NAT Setup

Advanced Management
21. Filter Set Configuration
22. SNMP Configuration
23. System Password
24. System Maintenance
25. IP Routing Policy Setup
26. Schedule Setup

99. Exit

Enter Menu Selection Number:
```

```
C:\ Telnet 192.168.1.1

Menu 1 - General Setup

System Name= gaz
Location= que
Contact Person's Name= qwer
Domain Name= rew
Edit Dynamic DNS= No

Route IP= Yes
Bridge= No

Press ENTER to Confirm or ESC to Cancel:
```

```
C:\ Telnet 192.168.1.1

Menu 3 - LAN Setup

1. LAN Port Filter Setup
2. TCP/IP and DHCP Setup

Enter Menu Selection Number: _
```

```
C:\ Telnet 192.168.1.1

Menu 3.2 - TCP/IP and DHCP Setup

DHCP Setup
DHCP= None
Client IP Pool Starting Address= N/A
Size of Client IP Pool= N/A
Primary DNS Server= N/A
Secondary DNS Server= N/A
Remote DHCP Server= N/A
TCP/IP Setup:
IP Address= 192.168.1.1
IP Subnet Mask= 255.255.255.0
RIP Direction= Both
Version= RIP-2B
Multicast= None
IP Policies=
Edit IP Alias= No

Press ENTER to Confirm or ESC to Cancel:
Press Space Bar to Toggle.
```

```
C:\ Telnet 192.168.1.1

Menu 4 - Internet Access Setup

ISP's Name= MyISP
Encapsulation= ENET ENCAP
Multiplexing= LLC-based
UPI #= 0
UCI #= 33
ATM QoS Type= UBR
  Peak Cell Rate <PCR>= 0
  Sustain Cell Rate <SCR>= 0
  Maximum Burst Size <MBS>= 0
My Login= N/A
My Password= N/A
ENET ENCAP Gateway= N/A
IP Address Assignment= Dynamic
  IP Address= N/A
Network Address Translation= SUA Only
  Address Mapping Set= N/A

Press ENTER to Confirm or ESC to Cancel:
```

```
C:\ Telnet 192.168.1.1

Menu 11 - Remote Node Setup

1. MyISP <ISP, SUA>
2. _____
3. _____
4. _____
5. _____
6. _____
7. _____
8. _____

Enter Node # to Edit:
```



```
C:\ Telnet 192.168.1.1

Menu 11.1 - Remote Node Profile

Rem Node Name= MyISP
Active= Yes
Route= IP
Bridge= No

Encapsulation= ENET ENCAP
Multiplexing= LLC-based
Service Name= N/A
Edit IP/Bridge= No
Edit ATM Options= No

Incoming:
  Rem Login= N/A
  Rem Password= N/A
Telco Option:
  Allocated Budget(min)= N/A
  Period(hr)= N/A
  Schedule Sets= N/A
  Nailed-Up Connection= N/A
Outgoing:
  My Login= N/A
  My Password= N/A
  Authen= N/A
Session Options:
  Edit Filter Sets= No
  Idle Timeout(sec)= N/A

Press ENTER to Confirm or ESC to Cancel:
```

```
C:\ Telnet 192.168.1.1

Menu 24 - System Maintenance

1. System Status
2. System Information and Console Port Speed
3. Log and Trace
4. Diagnostic
5. Backup Configuration
6. Restore Configuration
7. Upload Firmware
8. Command Interpreter Mode
9. Call Control
10. Time and Date Setting

Enter Menu Selection Number:
```

```
c:\ Telnet 192.168.1.1

Menu 24.1 - System Maintenance - Status                               13:26:08
                                                                    Sat. Jan. 08, 2000

Mode-Lnk Status      TxPkts      RxPkts      Errors      Tx B/s      Rx B/s      Up Time
1-ENET  Up            189830      2112050     0           0           1108       0:12:12
2      N/A             0           0           0           0           0          0:00:00
3      N/A             0           0           0           0           0          0:00:00
4      N/A             0           0           0           0           0          0:00:00
5      N/A             0           0           0           0           0          0:00:00
6      N/A             0           0           0           0           0          0:00:00
7      N/A             0           0           0           0           0          0:00:00
8      N/A             0           0           0           0           0          0:00:00

My WAN IP <from ISP>: 86.106.217.57

Ethernet:
  Status: 100M/Full Duplex Tx Pkts: 197163
  Collisions: 0           Rx Pkts: 214608
CPU Load = 4.78%

WAN:
  Line Status: Up
  Upstream Speed: 928 kbps
  Downstream Speed: 2048 kbps

Press Command:
COMMANDS: 1-Reset Counters ESC-Exit
```

Дополнительно

```
c:\ Telnet 192.168.1.1

Menu 24.4 - System Maintenance - Diagnostic

xDSL                               System
 1. Reset xDSL                     21. Reboot System
                                   22. Command Mode

TCP/IP
 12. Ping Host

Enter Menu Selection Number: _
Host IP Address= N/A
```

Пинг удалось

```
c:\ Telnet 192.168.1.1
Start connection. Wait for 6 seconds for next PING
Resolving 212.0.200.2... 212.0.200.2
  sent      rcvd  rate   rtt    avg    mdev   max    min
    1         1  100    17     17     0     17     17
### Enter y to send next PING. any other key to return ###
-
```