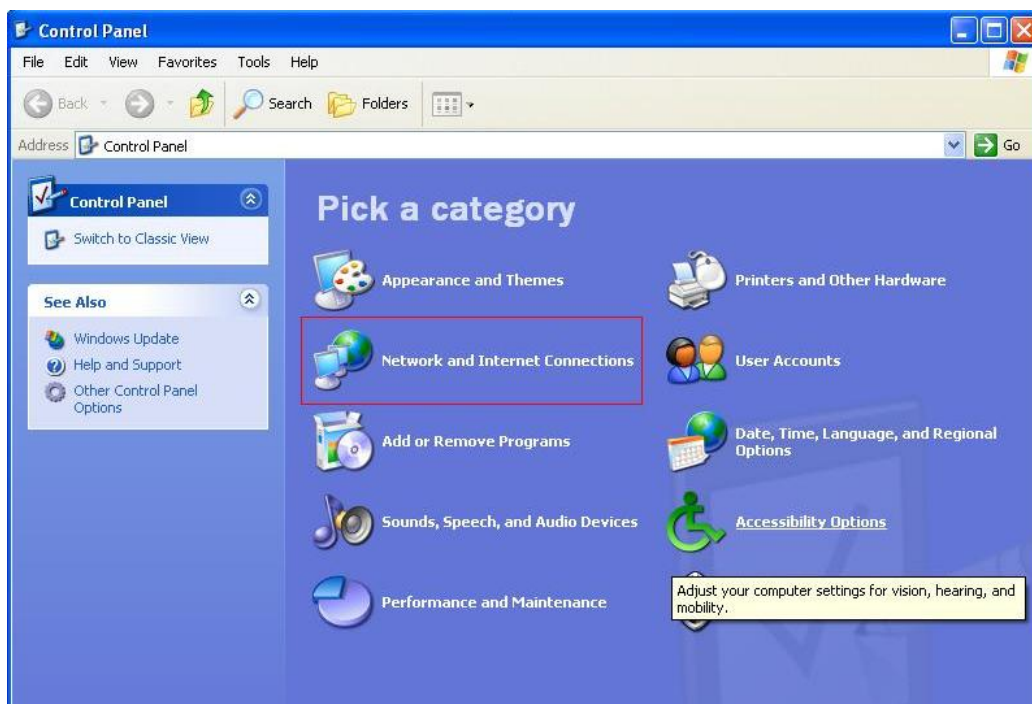


Regim router

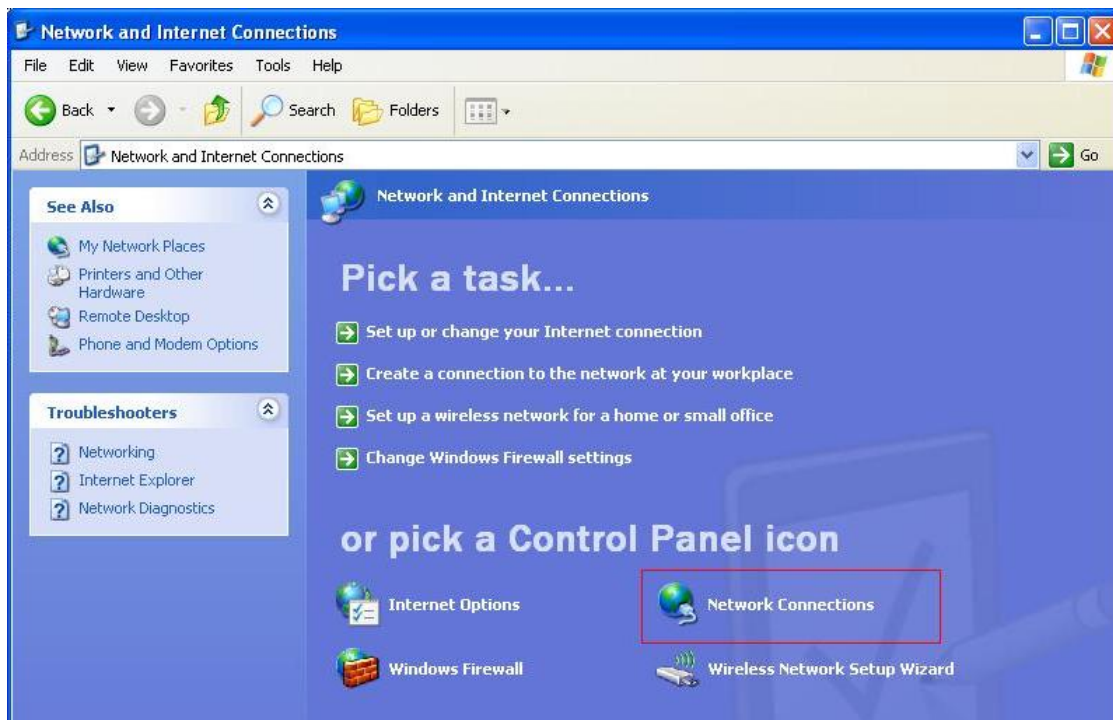
Se acceseaza meniul **START** dupa care **Control Panel**



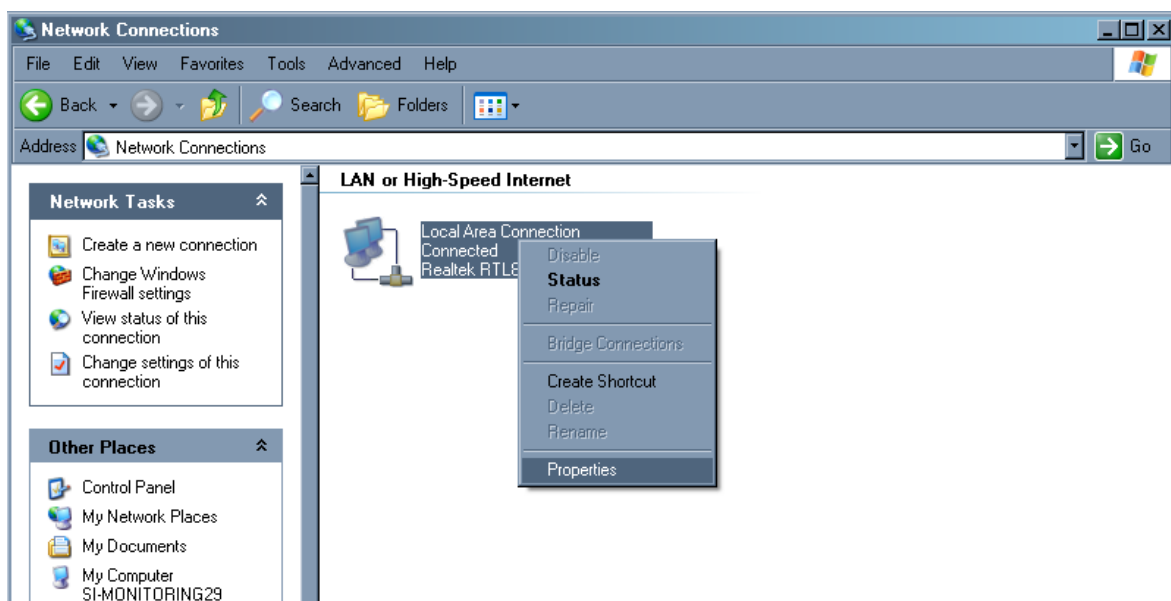
Se deschide fereastra Control Panel. Dupa asta se acceseaza **Network and Internet Connections**



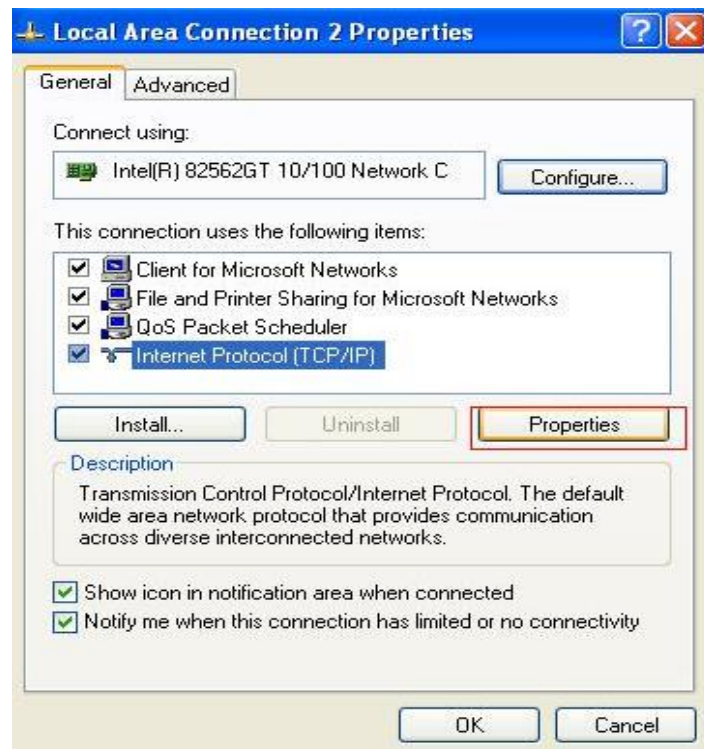
Din lista iconitelor Control panel se alege **Network Connections**



Apare fereastra Network Connections si aici se selecteaza **Local Area Connection** se apasa cu mouseul click dreapta dupa care **Properties** ca in imaginea care urmeaza:



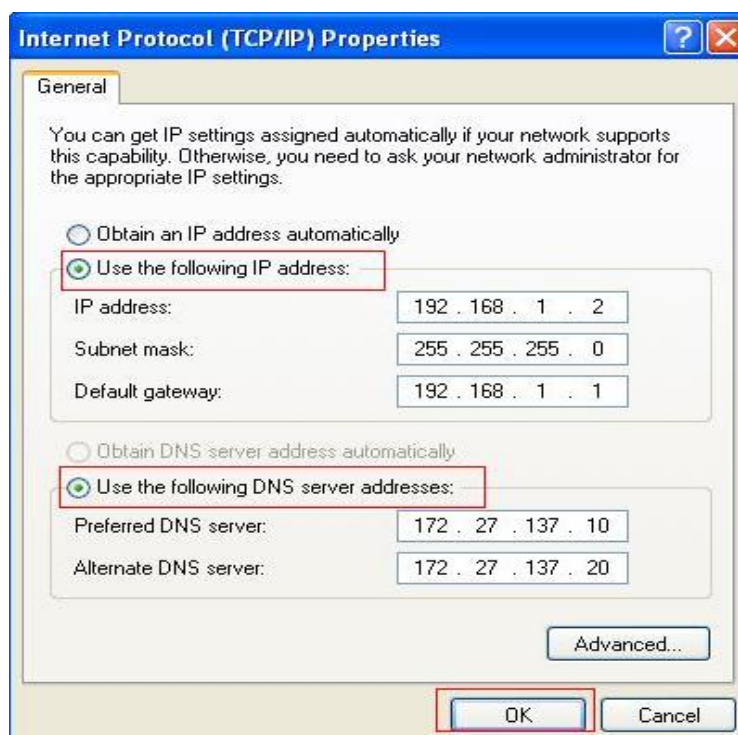
Dupa aceasta apare fereastra **Local Area Connection Properties**, aici se selecteaza optiunea **Internet Protocol (TCP/IP)** si se acceseaza butonul **Properties**



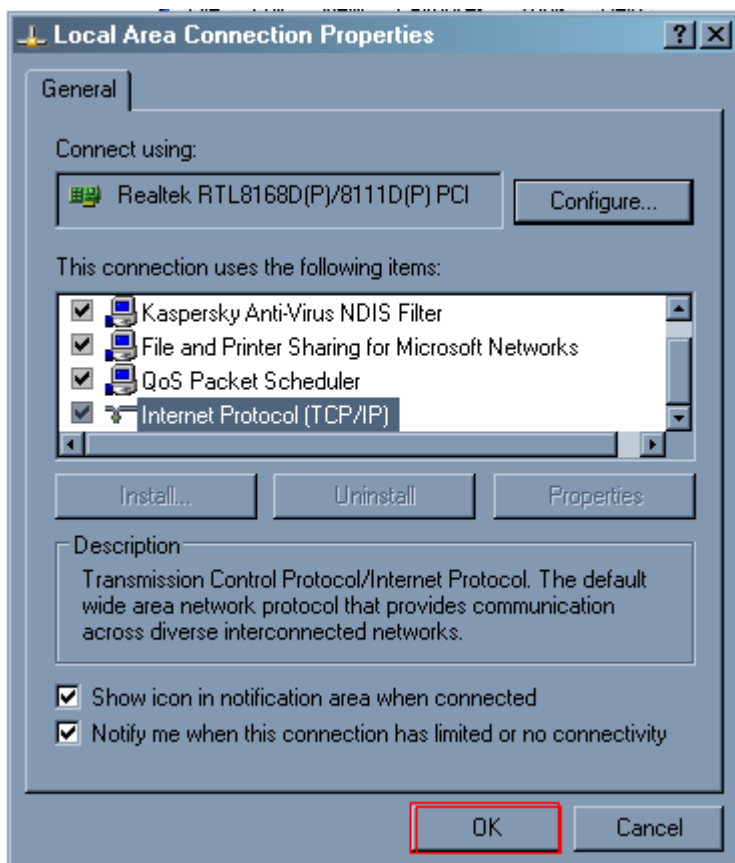
Apare fereastra **Internet Protocol TCP/IP Properties**

In fereastra care a aparut se alege optiunea:

Use the following IP address si optiunea *Use the following DNS server address* si se indica datela ca in screenul de mai jos:



Dupa introducerea datelor se apasa butonul **OK**



Inca odata se apasa **OK**

Dupa toate configurarile cartei de retea deschideți Internet Explorer sau alt Browser.

În bara de adrese introduceți următoarele:

<http://192.168.1.1>

Tastați Enter.

Trebuie sa apara fereastra de login a modemului asemanatoare cu cea din imagine de mai jos:

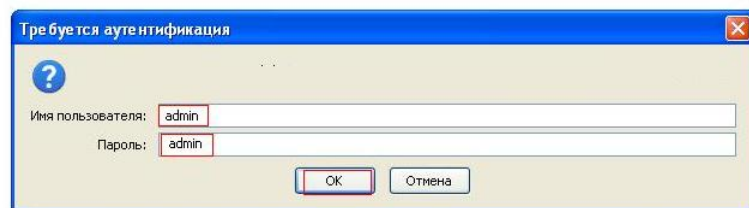


Va apărea forma de autorizare cu solicitarea Numelui de utilizator și parolei

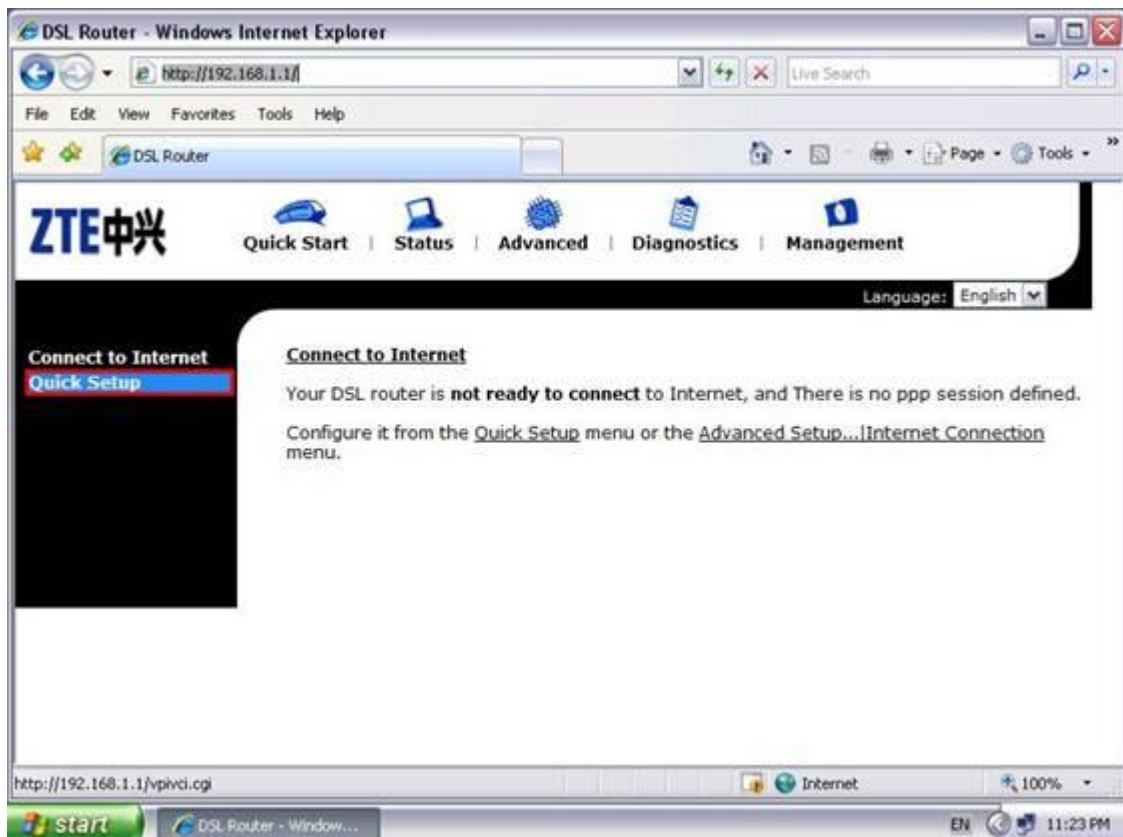
Introduceți:

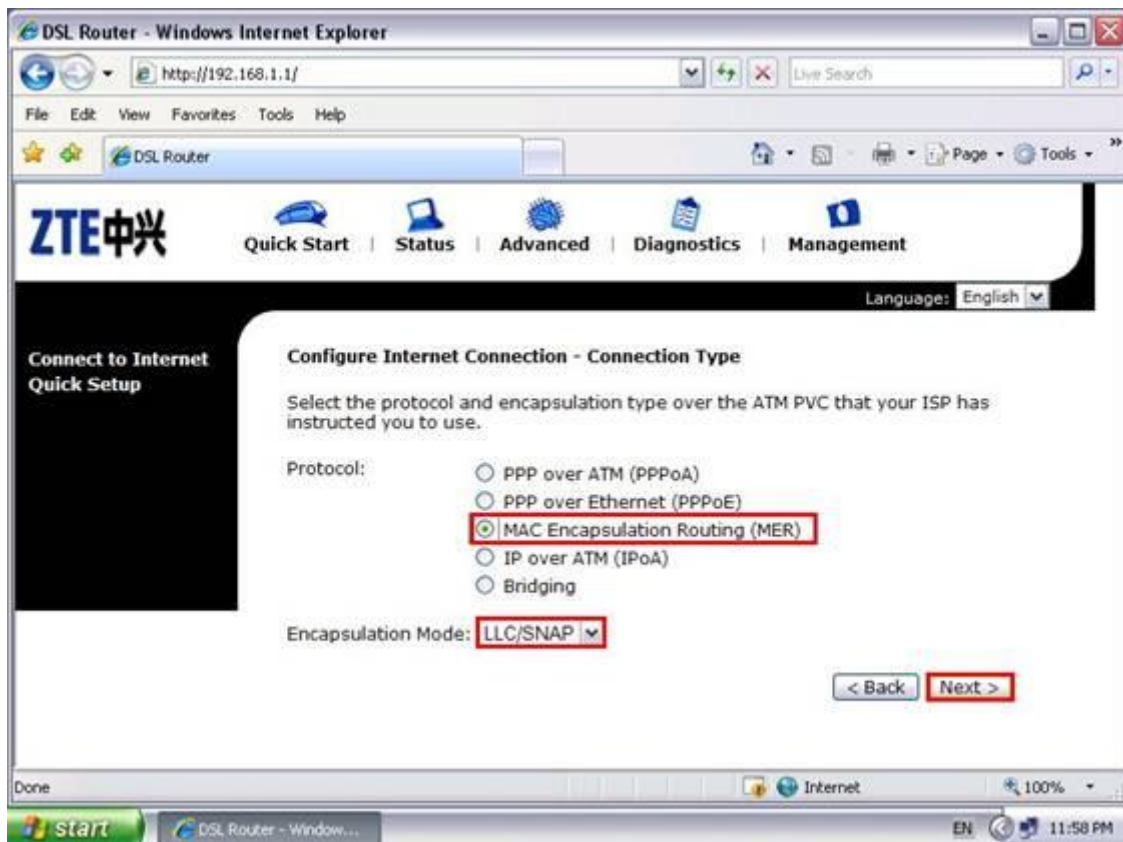
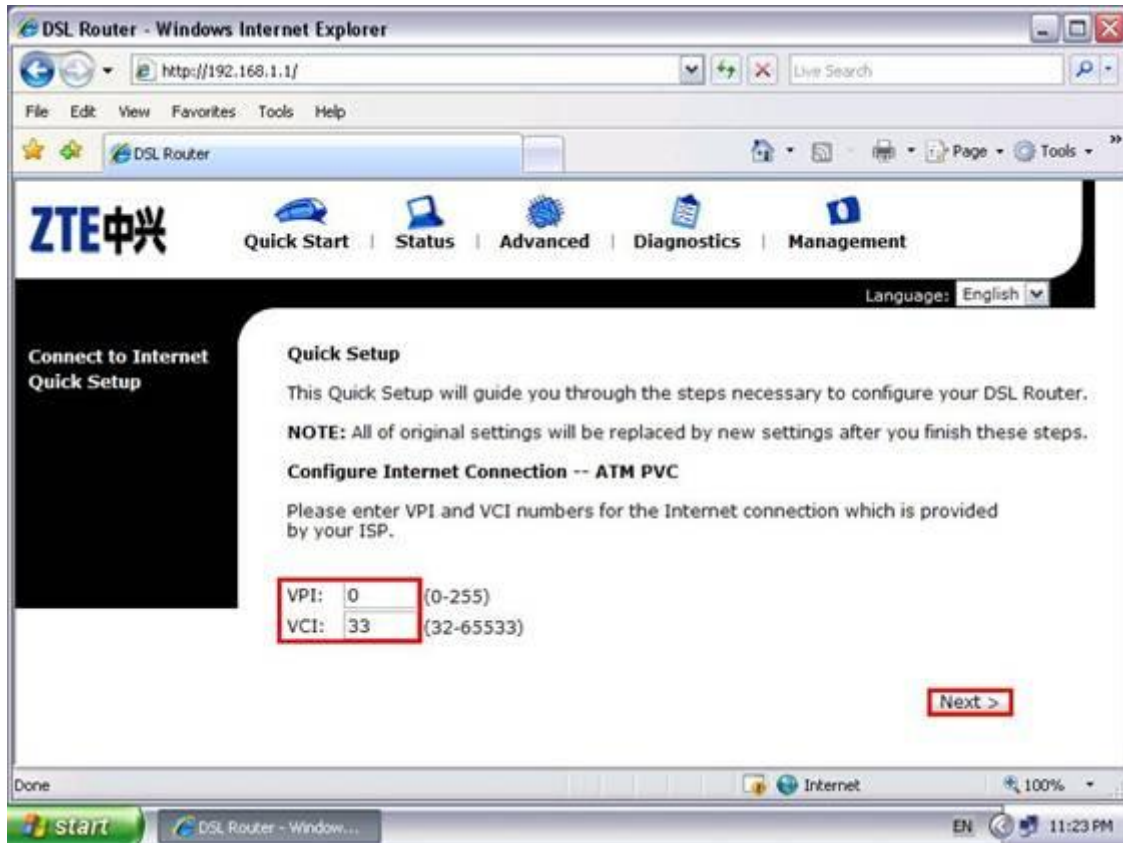
User Name: **admin**

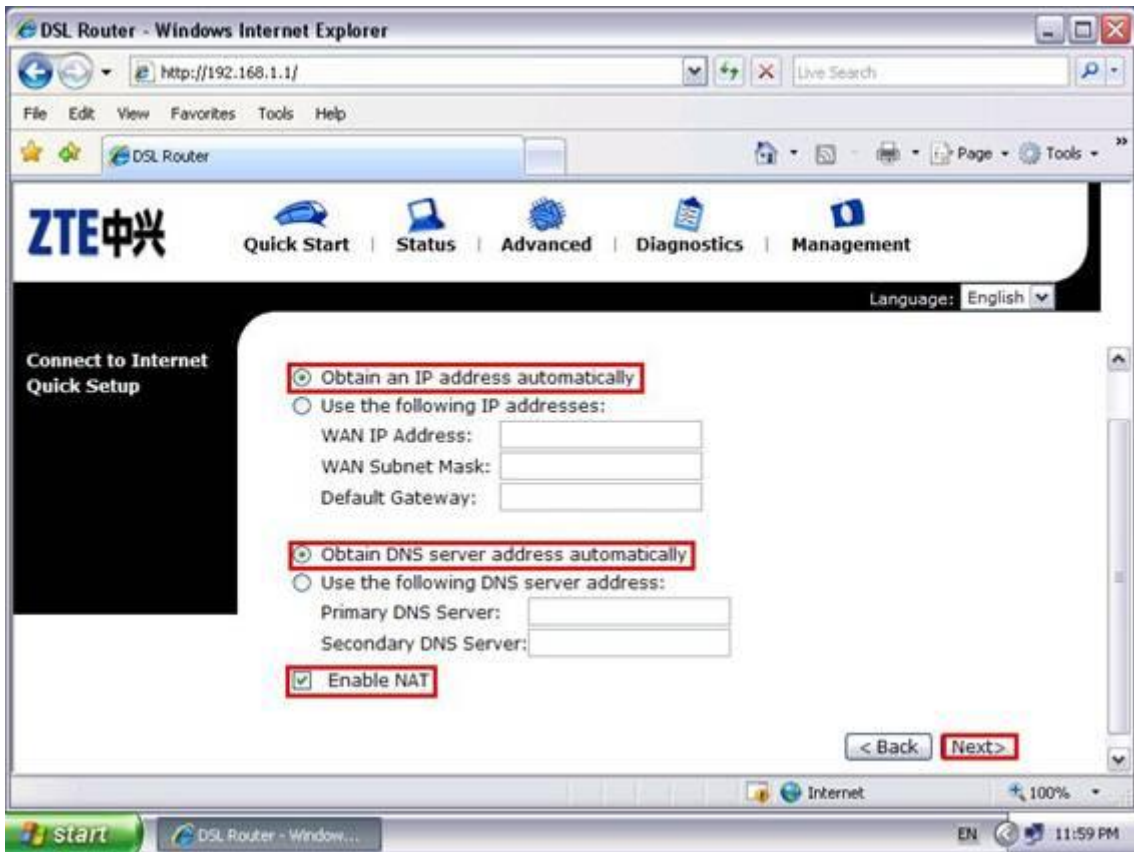
Password: **admin**

A small dialog box with a blue title bar containing the text 'Требуется аутентификация' (Authentication required). The dialog has a question mark icon and two input fields: 'Имя пользователя:' (Username) with 'admin' and 'Пароль:' (Password) with 'admin'. There are 'OK' and 'Отмена' (Cancel) buttons at the bottom.

Tastati butonul **OK**







DSL Router - Windows Internet Explorer

http://192.168.1.1/

File Edit View Favorites Tools Help

DSL Router

ZTE中兴 Quick Start | Status | Advanced | Diagnostics | Management

Language: English

Connect to Internet Quick Setup

Internet (WAN) Configuration:

VPI / VCI	0 / 33
Connection Type	MER, LLC/SNAP
NAT	Enabled
WAN IP Address	Automatically Assigned
Default Gateway	Automatically Assigned
DNS Server	Automatically Assigned

LAN Setting:

Primary LAN IP	192.168.1.1 /255.255.255.0
Secondary LAN IP	0.0.0.0 /0.0.0.0
DHCP Server	Disable

Click "Apply" to accept these settings. Click "Back" to make any modifications.

< Back Apply

Done Internet 100%

start DSL Router - Window... EN 12:00 AM

DSL Router - Windows Internet Explorer

http://192.168.1.1/

File Edit View Favorites Tools Help

DSL Router

ZTE中兴 Quick Start | Status | Advanced | Diagnostics | Management

Language: English

Overview
 ADSL Line
WAN
 Traffic Statistics
 DHCP Table
 Routing Table
 ARP Table

Overview of Device Information

This information reflects the current status of your DSL Router.

ADSL Port	Enable
Downstream Line Rate	4096
Upstream Line Rate	928
LAN IP Address	192.168.1.1
Default Gateway	212.0.211.1
Primary DNS Server	172.27.137.10
Secondary DNS Server	172.27.137.20
Ethernet MAC Address	00:15:EB:C7:04:26
Firmware Version	ZXD5L 8311IV5.5.1a_E09_OV

http://192.168.1.1/wandfg.cmd?action=view Internet 100%

start DSL Router - Window... EN 9:55 PM

DSL Router - Windows Internet Explorer

http://192.168.1.1/

File Edit View Favorites Tools Help

DSL Router

ZTE中兴 Quick Start | Status | Advanced | Diagnostics | Management

Language: English

Overview
ADSL Line
WAN
Traffic Statistics
DHCP Table
Routing Table
ARP Table

WAN Info

Current WAN Info are listed below.

PVC Name	VPI/VCI	Category	Protocol	NAT	WAN IP Address	Status / Online Time
mer_0_33	0/33	UBR	MER LLC/SNAP	On	212.0.211.61	Up

Done

Internet 100%

start DSL Router - Window... EN 9:56 PM