

Deschideți Internet Explorer sau alt Browser.

În bara de adrese introduceți următoarele:

<http://192.168.1.1>

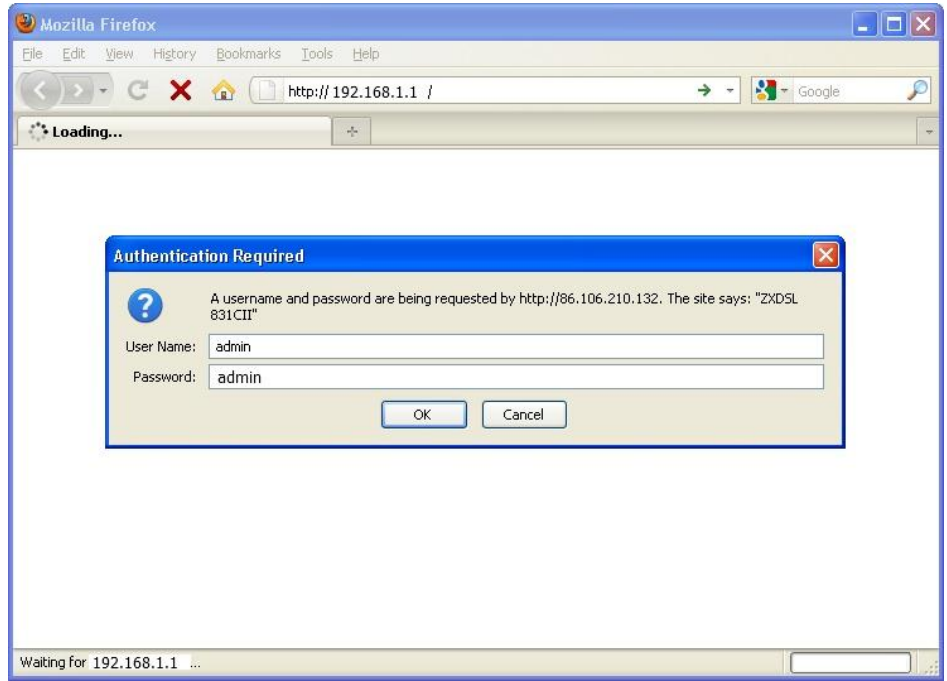
Tastați Enter.

Va apărea forma de autorizare cu solicitarea Numelui de utilizator și parolei

Introduceți:

User Name: admin

Password: admin



Va apărea interfața configurării modemului

Device Information	
Product Name	ZXDSL 831CII
Software Version	ZXDSL 831CIV1.0.0a_Z38_OV
ADSL Firmware Version	FwVer:3.11.2.186_TC3086 HwVer:T14.F7_5.0
LAN IP Address	192.168.1.1
LAN Subnet Mask	255.255.255.0
MAC Address	00:25:12:c4:
Virtual Circuit	PVC0
Wan IP Address	N/A
Wan Subnet Mask	N/A
Default Gateway	N/A
Primary DNS Server	N/A
Secondary DNS Server	N/A

Selectați *Advanced* apoi *LAN*
Bifați *DHCP Disable*
Tastați *SAVE*.

The screenshot shows the ZTE router configuration interface. At the top, there is a navigation bar with icons for Quick Start, Status, Advanced (highlighted with a red box), Diagnose, and Management. Below this is a language dropdown menu set to English. On the left side, there is a vertical menu with options: LAN (highlighted with a red box), WAN, ADSL, NAT, Routing, QoS, Filter, VLAN, Firewall, UPnP, and DDNS. The main content area is titled 'Router Local IP' and contains the following settings:

- IP Address: 192.168.1.1
- IP Subnet Mask: 255.255.255.0
- Dynamic Route: RIP2-B (dropdown), Direction: None (dropdown)
- Multicast: IGMP v2 (dropdown)
- IGMP Snoop: Disabled Enabled

Below these settings is a section for DHCP with the following options:

- DHCP: Disabled Enabled DHCP Server Enabled Relay

At the bottom of the DHCP section, there are two buttons: 'SAVE' (highlighted with a red box) and 'CANCEL'.

Selectați *Advanced* apoi *WAN*
Introduceți *VPI 0*
VCI 33
Encapsulation ISP: *Dynmic IP Address*
Dynamic IP: Encapsulation *1483 Bridged IP LLC*
Bridge interface *Activated*.
NAT: Enable
Tastați *SAVE*.

LAN

WAN

ADSL

NAT

Routing

QoS

Filter

VLAN

Firewall

UPnP

DDNS

ATM VC

Virtual Circuit: PVC0 PVCs Summary

Status: Activated Deactivated

VPI: 0 (Range: 0~255)

VCI: 33 (Range: 1~65535)

QoS

ATM QoS: UBR

PCR: 0 cells/second

SCR: 0 cells/second

MBS: 0 cells

Encapsulation

ISP: Dynamic IP Address Static IP Address PPPoA/PPPoE Bridge Mode

Dynamic IP

Encapsulation: 1483 Bridged IP LLC

Bridge Interface: Activated Deactivated

NAT: Enable

Default Route: Yes No

MTU Option: 1500 bytes(default:1500)

Dynamic Route: RIP2-B Direction Both

Multicast: IGMP v2

MAC Spoofing: Enabled Disabled

00:00:00:00:00:00

SAVE

DELETE

View WAN Status

Selectați *Management* apoi *Reboot*.

Bifați *Current Settings*

Tastați *RESTART*.

Setările modemului se vor salva. Procedura dată durează aproximativ 2 min.

Admin Account

Date&Time

Access Control

SNMP

TR069

System Log

Update Firmware

Reboot

System

Restart

System Restart with: Current Settings Factory Default Settings

2 RESTART

Dupa Restar Modem puteți verifica daca modem a obținut IP adresa.
 Selectați *Status* apoi *WAN Status*.



- Quick Start
- Status
- Advanced
- Diagnose
- Management

Language English

- Device Info
- ADSL Status
- LAN Status
- WAN Status
- Routing Status
- Statistics
- ARP Table

Wan Connection

#	Active	VPI/VCI	ATM QoS	ENCAP	NAT	IP Address	Default Route	Status
PVC0	Yes	0/33	UBR	ENET ENCAP LLC	Enable	86.106.XXX.XX	Enable	Up
PVC1	Yes	0/35	UBR	RFC 1483 LLC	Disabled	0.0.0.0	Disabled	Up
PVC2	Yes	8/35	UBR	RFC 1483 LLC	Disabled	0.0.0.0	Disabled	Up
PVC3	Yes	0/32	UBR	RFC 1483 LLC	Disabled	0.0.0.0	Disabled	Up
PVC4	Yes	0/100	UBR	RFC 1483 LLC	Disabled	0.0.0.0	Disabled	Up
PVC5	Yes	8/36	UBR	RFC 1483 LLC	Disabled	0.0.0.0	Disabled	Up
PVC6	-	-/-	-	-	-	-	-	-
PVC7	-	-/-	-	-	-	-	-	-