

Deschideți Internet Explorer sau alt Browser.

În bara de adrese introduceți următoarele:

<http://192.168.1.1>

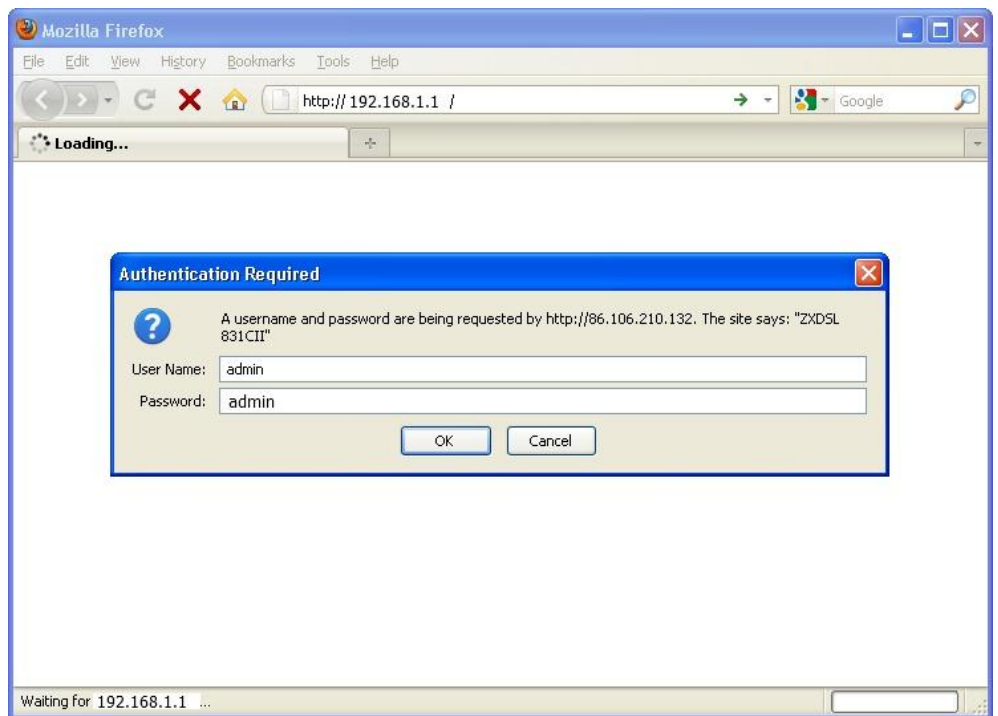
Tastați Enter.

Va apărea forma de autorizare cu solicitarea Numelui de utilizator și parolei

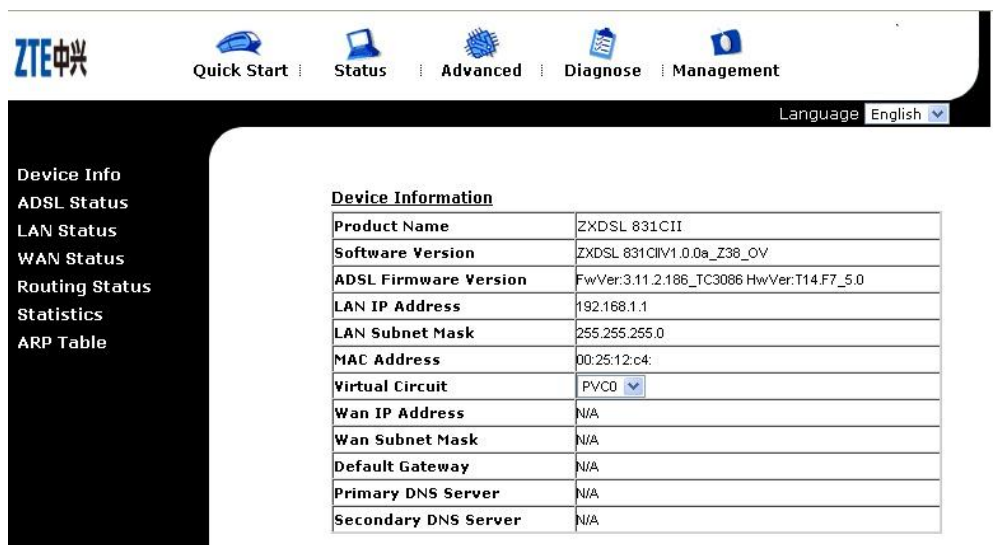
Introduceți:

User Name: admin

Password: admin



Va apărea interfața configurării modemului



Selectați *Advanced* apoi *LAN*  
Bifați *DHCP Disable*  
Tastați *SAVE*.

The screenshot shows the ZTE router's configuration interface. The 'Advanced' tab is selected in the top navigation bar. On the left sidebar, 'LAN' is highlighted. The main content area is titled 'Router Local IP' and contains the following fields:

- IP Address: 192.168.1.1
- IP Subnet Mask: 255.255.255.0
- Dynamic Route: RIP2-B, Direction: None
- Multicast: IGMP v2
- IGMP Snoop:  Disabled  Enabled

Below these fields is the 'DHCP' section with the following options:

- DHCP:  Disabled  Enabled DHCP Server  Enabled Relay

At the bottom of the DHCP section are 'SAVE' and 'CANCEL' buttons.

Selectați *Advanced* apoi *WAN*  
Introduceți *VPI 0*  
*VCI 33*  
Encapsulation ISP: *Bridge Mode*  
Bridge Mode: Encapsulation *1483 Bridged IP LLC*  
Tastați *SAVE*.

The screenshot shows the ZTE router's configuration interface. The 'Advanced' tab is selected in the top navigation bar. On the left sidebar, 'WAN' is highlighted. The main content area is titled 'ATM VC' and contains the following fields:

- Virtual Circuit: PVC0
- Status:  Activated  Deactivated
- VPI: 0 (Range: 0~255)
- VCI: 33 (Range: 1~65535)

Below these fields is the 'QoS' section with the following options:

- ATM QoS: UBR
- PCR: 0 cells/second
- SCR: 0 cells/second
- MBS: 0 cells

Below the QoS section is the 'Encapsulation' section with the following options:

- ISP:  Dynamic IP Address  Static IP Address  PPPoA/PPPoE  Bridge Mode

Below the Encapsulation section is the 'Bridge Mode' section with the following options:

- Encapsulation: 1483 Bridged IP LLC

At the bottom of the Bridge Mode section are 'SAVE', 'DELETE', and 'View WAN Status' buttons.

Selectați *Management* apoi *Reboot*.

Bifați *Current Settings*

Tastați **RESTART**.

Setările modemului se vor salva. Procedura dată durează aproximativ 2 min.

