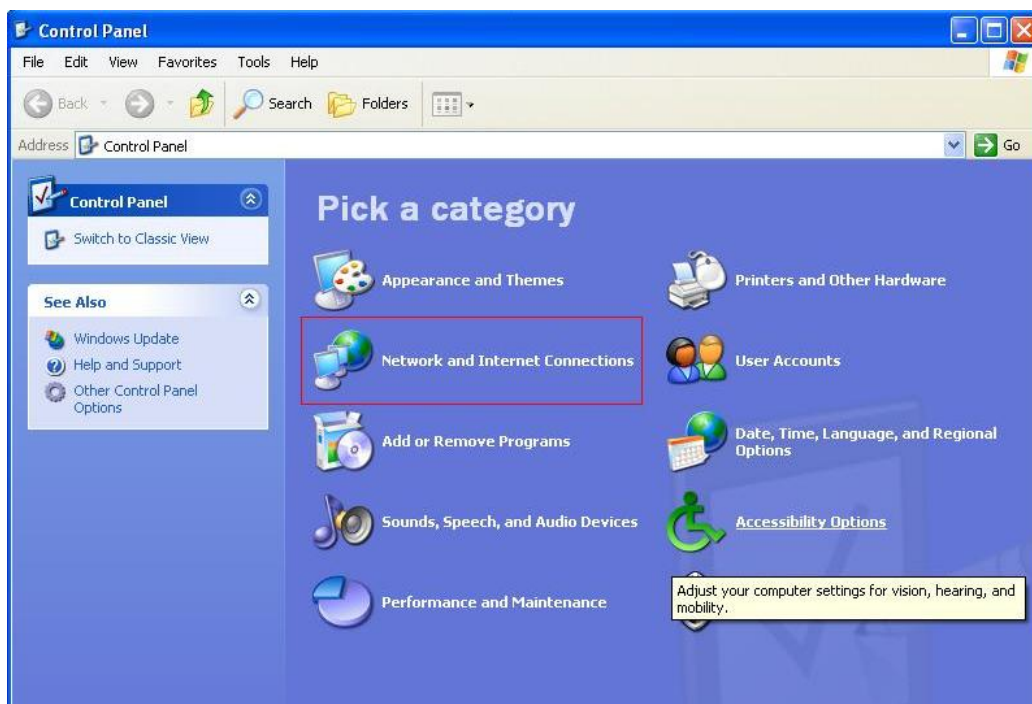


# Regim router

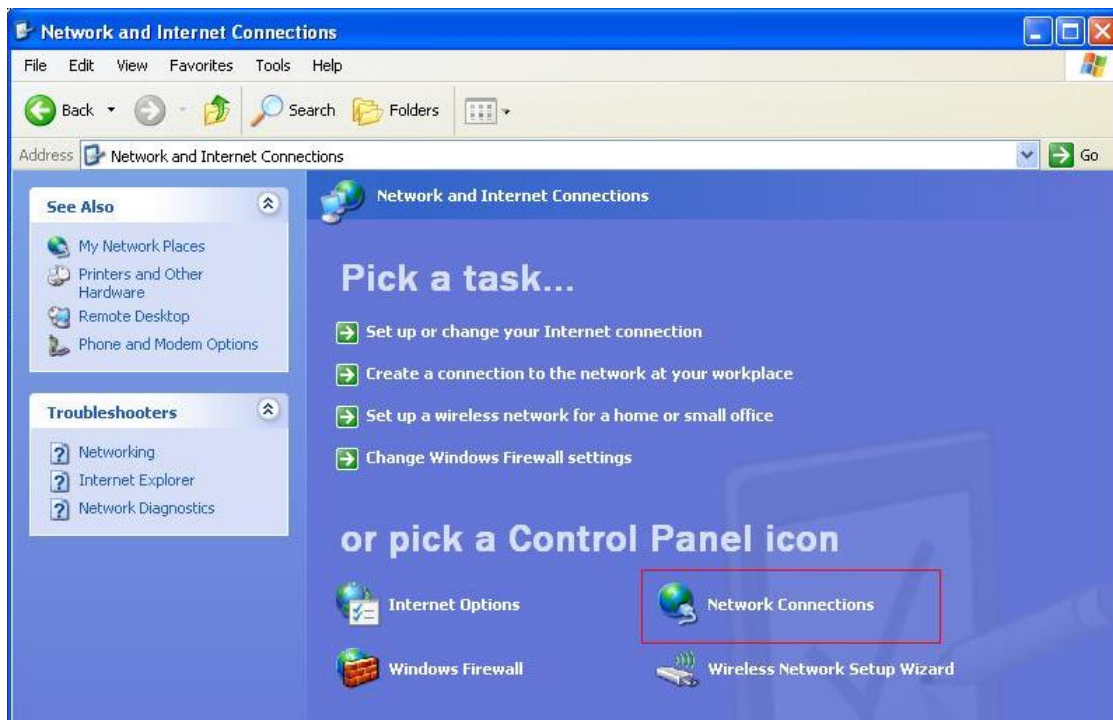
Se acceseaza meniul **START** dupa care **Control Panel**



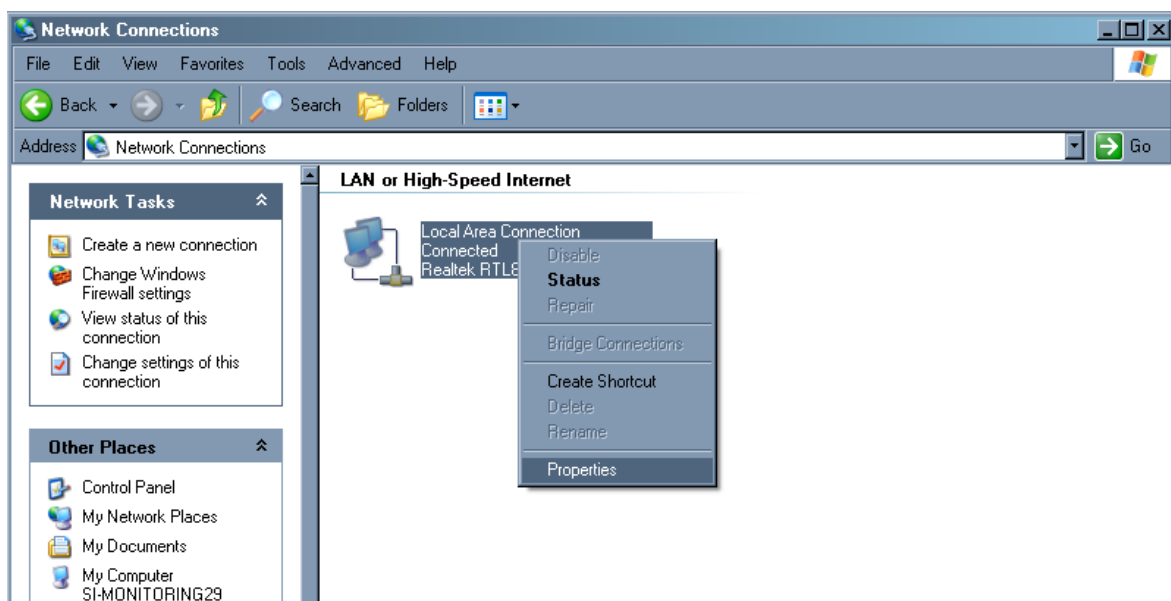
Se deschide fereastra Control Panel. Dupa asta se acceseaza **Network and Internet Connections**



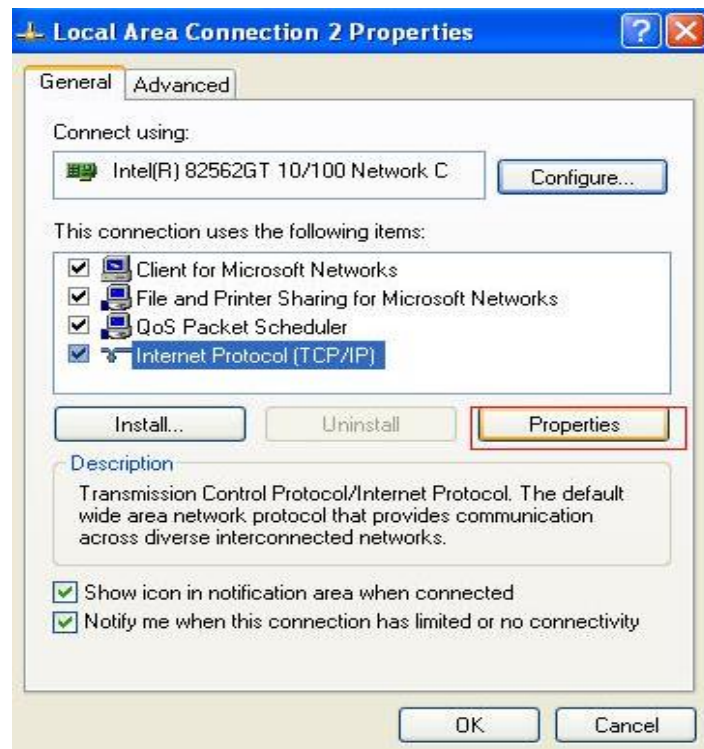
Din lista iconitelor Control panel se alege **Network Connections**



Apare fereastra Network Connections si aici se selecteaza **Local Area Connection** se apasa cu mouseul click dreapta dupa care **Properties** ca in imaginea care urmeaza:



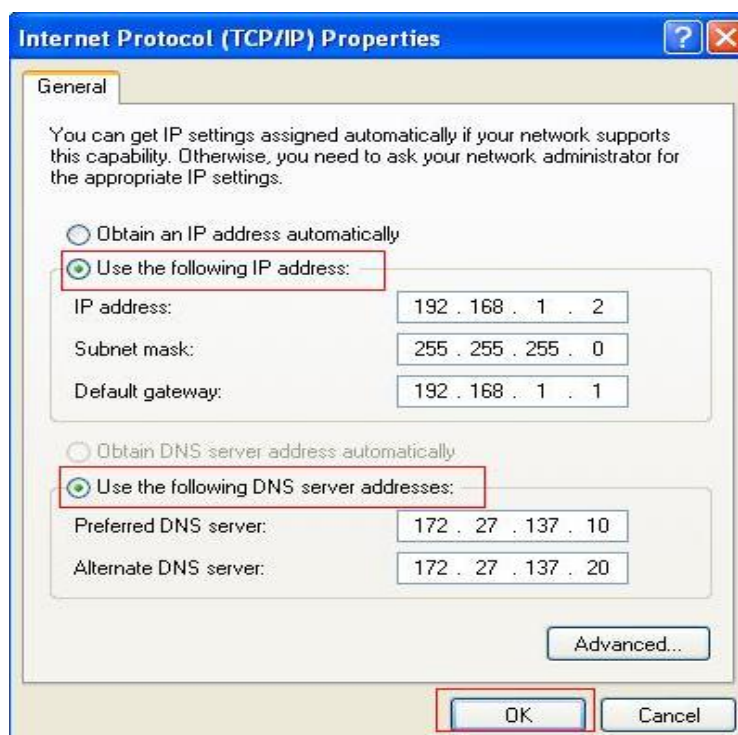
Dupa aceasta apare fereastra **Local Area Connection Properties**, aici se selecteaza optiunea **Internet Protocol (TCP/IP)** si se acceseaza butonul **Properties**



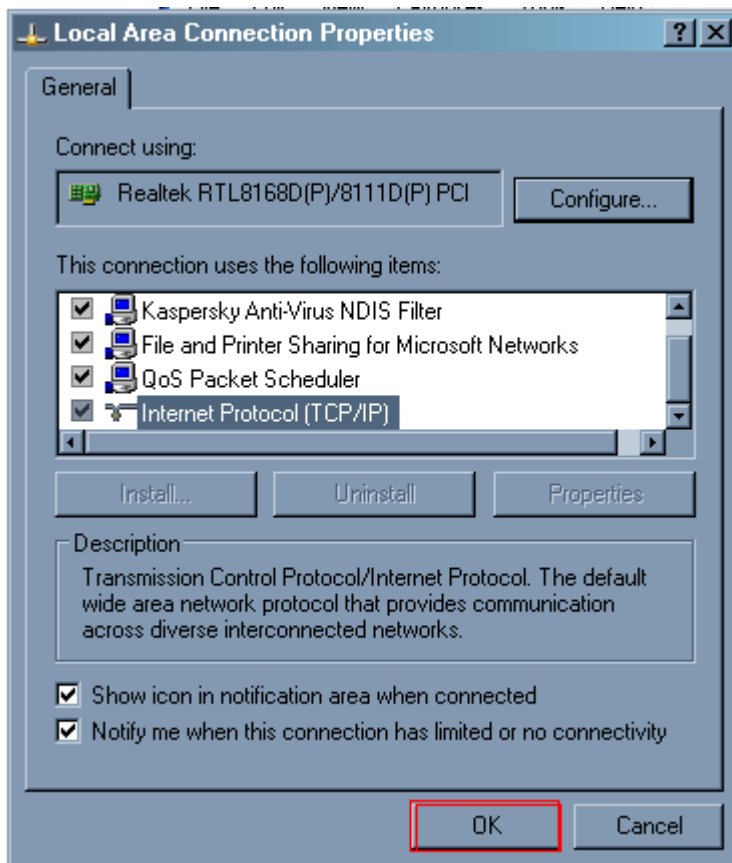
Apare fereastra **Internet Protocol TCP/IP Properties**

In fereastra care a aparut se alege optiunea:

*Use the following IP address* si optiunea *Use the following DNS server address* si se indica datela ca in screenul de mai jos:



Dupa introducerea datelor se apasa butonul **OK**



Inca odata se apasa **OK**

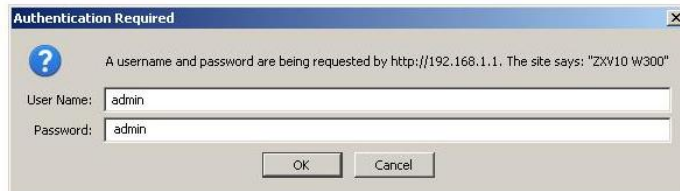
Deschideți Internet Explorer sau alt Browser.

În bara de adrese introduceți următoarele:

<http://192.168.1.1>

Tastați Enter.

Trebuie sa apara fereastra de login a modemului asemanatoare cu cea din imagine de mai jos:



Va apărea forma de autorizare cu solicitarea Numelui de utilizator și parolei

Introduceți:

User Name: **admin**

Password: **admin**

Daca nu merge loginarea de mai sus atunci se accepta la

user name:**Administrator**

password:**qazwsx**

Tastati butonul **OK**

Aceesind meniul modemului pe ecran trebuie sa apara o fereastra ,pentru a vizualiza statutul la modem :

**ZTE中兴** ZXV10 W300

**Status** | Interface Setup | Advanced Setup | Access Management | Maintenance | Status

Device Info | System Log | Statistics

**Device Information**  
Firmware Version : W300V3.1.2a\_DR0\_MD  
MAC Address : 00:15:eb:f7:2c:5f

**LAN**  
IP Address : 192.168.1.1  
Subnet Mask : 255.255.255.0  
DHCP Server : Enabled

**WAN**  
Virtual Circuit : PVC0  
Status : Connected  
Connection Type : Dynamic IP  
IP Address : 86.106.210.6  
Subnet Mask : 255.255.255.0  
Default Gateway : 86.106.210.1  
Primary DNS : 172.27.137.30  
Secondary DNS : 172.27.137.10  
NAT : Enabled  
Renew Release

**ADSL**  
ADSL Firmware Version : FwVer:3.12.7.0\_TC3085 HwVer:T14.F7\_5.0  
Line State : Showtime  
Modulation : ADSL2 PLUS  
Annex Mode : ANNEX\_A

|                    | Downstream | Upstream |      |
|--------------------|------------|----------|------|
| SNR Margin :       | 16.1       | 9.8      | db   |
| Line Attenuation : | 3.1        | 3.3      | db   |
| Data Rate :        | 14080      | 1021     | kbps |

Pentru a vizualiza care PVC(virtual circuit) este necesar de configurat pentru internet si sa nu intilnim careva erori in configurare se acceseaza meniul **Interface Setup** dupa care submeniul **Internet** si aici se acceseaza butonul **PVCs Summary** ca in imaginea de mai jos:

http://192.168.1.1/ 192.168.1.1 Ask.com

**ZTE中兴** ZXV10 W300

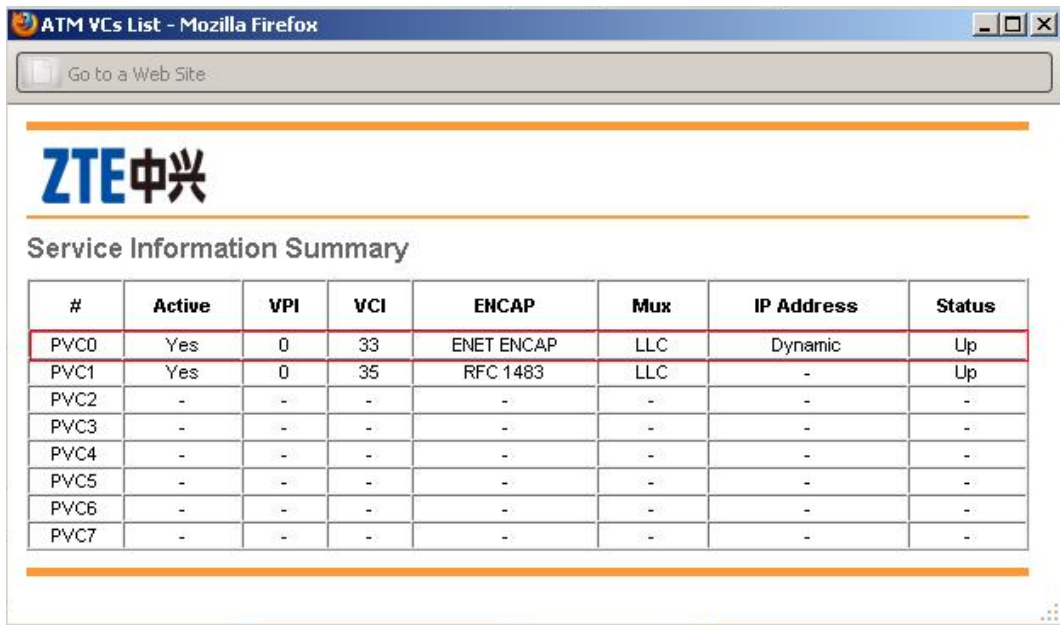
**Interface** | Interface Setup | Advanced Setup | Access Management | Maintenance | Status

Internet | LAN | Wireless

**ATM VC**

Virtual Circuit : PVC1 PVCs Summary  
Status :  Activated  Deactivated  
VPI : 0 (range: 0-255)  
VCI : 35 (range: 1-65535)

Accesind pasii de mai sus se ajunge la urmatoarea fereastra:

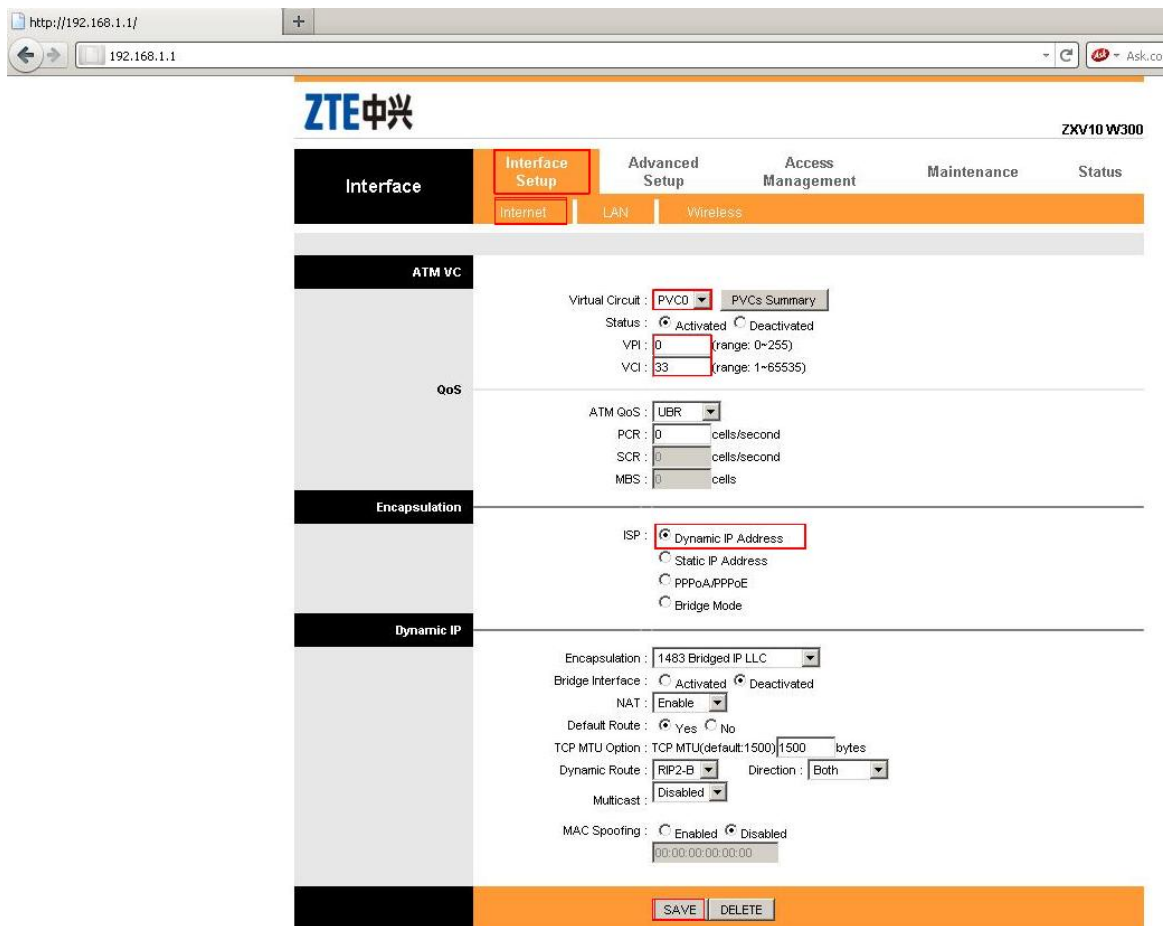


| #    | Active | VPI | VCI | ENCAP      | Mux | IP Address | Status |
|------|--------|-----|-----|------------|-----|------------|--------|
| PVC0 | Yes    | 0   | 33  | ENET ENCAP | LLC | Dynamic    | Up     |
| PVC1 | Yes    | 0   | 35  | RFC 1483   | LLC | -          | Up     |
| PVC2 | -      | -   | -   | -          | -   | -          | -      |
| PVC3 | -      | -   | -   | -          | -   | -          | -      |
| PVC4 | -      | -   | -   | -          | -   | -          | -      |
| PVC5 | -      | -   | -   | -          | -   | -          | -      |
| PVC6 | -      | -   | -   | -          | -   | -          | -      |
| PVC7 | -      | -   | -   | -          | -   | -          | -      |

In cazul nostru se configureaza PVC0 cum este aratat mai sus.

In configurarea modemului router(Dynamic IP) sau bridge (bridge mode) se alege PVC-ul care la VPI/VCI au valorile 0/33 ca in screenul de mai sus este PVC0.

Cu mouseul aplicam functia **Interface Setup** dupa care se aplica submeniul **Internet** si se urmeaza pasii care sunt aratati ca in screenul de mai jos:



http://192.168.1.1/

192.168.1.1

ZTE中兴

ZXV10 W300

Interface

Interface Setup

Advanced Setup

Access Management

Maintenance

Status

Internet

LAN

Wireless

ATM VC

Virtual Circuit : PVC0

PVCs Summary

Status :  Activated  Deactivated

VPI : 0 (range: 0-255)

VCI : 33 (range: 1-65535)

QoS

ATM QoS : UBR

PCR : 0 cells/second

SCR : 0 cells/second

MBS : 0 cells

Encapsulation

ISP :  Dynamic IP Address

Static IP Address

PPPoA/PPPoE

Bridge Mode

Dynamic IP

Encapsulation : 1483 Bridged IP LLC

Bridge Interface :  Activated  Deactivated

NAT : Enable

Default Route :  Yes  No

TCP MTU Option : TCP MTU(default:1500) 1500 bytes

Dynamic Route : RIP2-B Direction : Both

Multicast : Disabled

MAC Spoofing :  Enabled  Disabled

00:00:00:00:00:00

SAVE DELETE