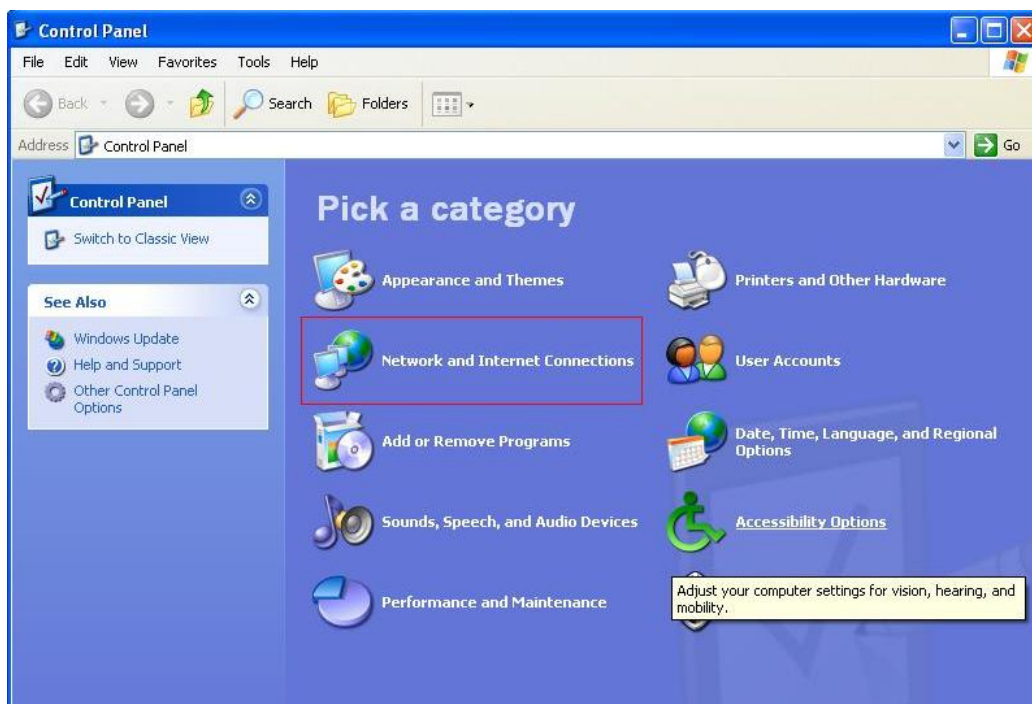


Regim bridge

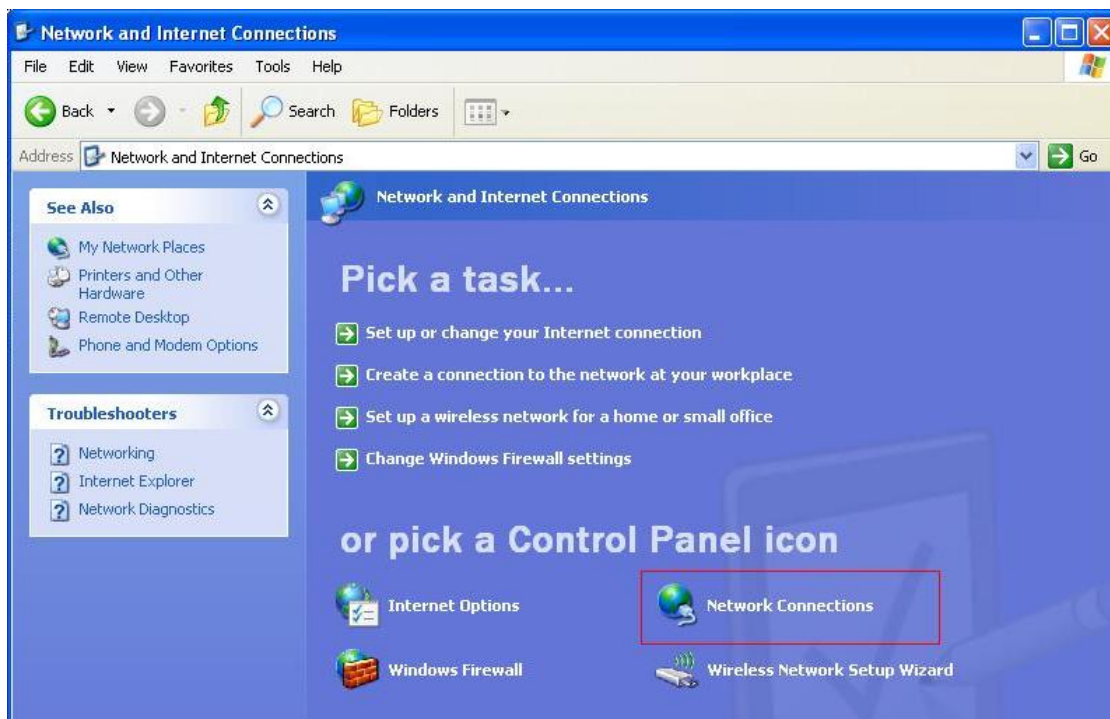
Se acceseaza meniul **START** dupa care **Control Panel**



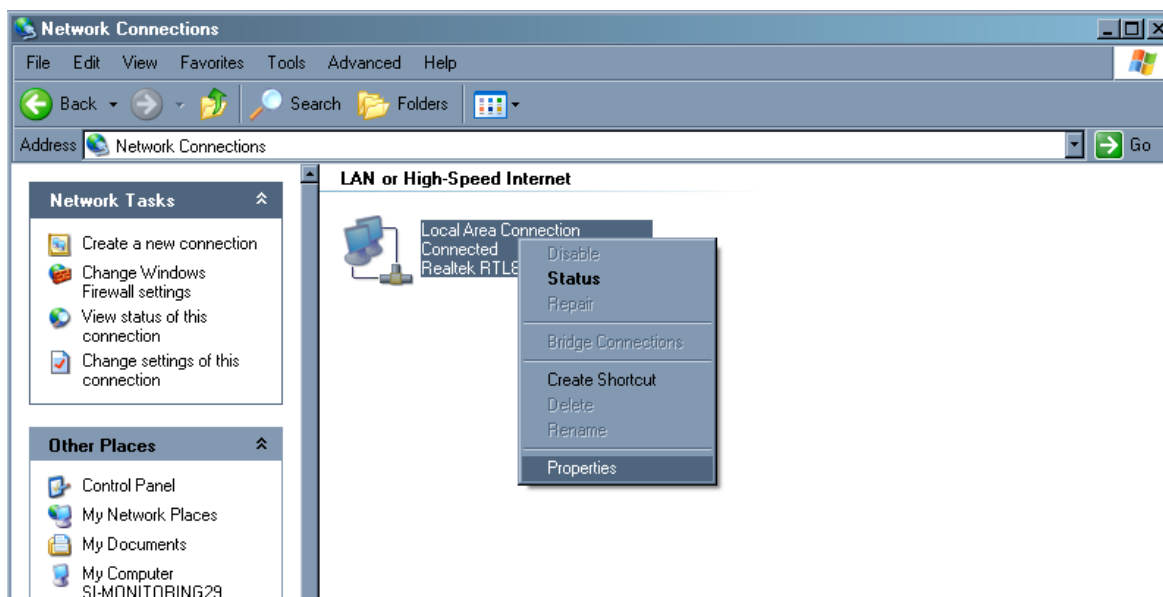
Se deschide fereastra Control Panel. Dupa asta se acceseaza **Network and Internet Connections**



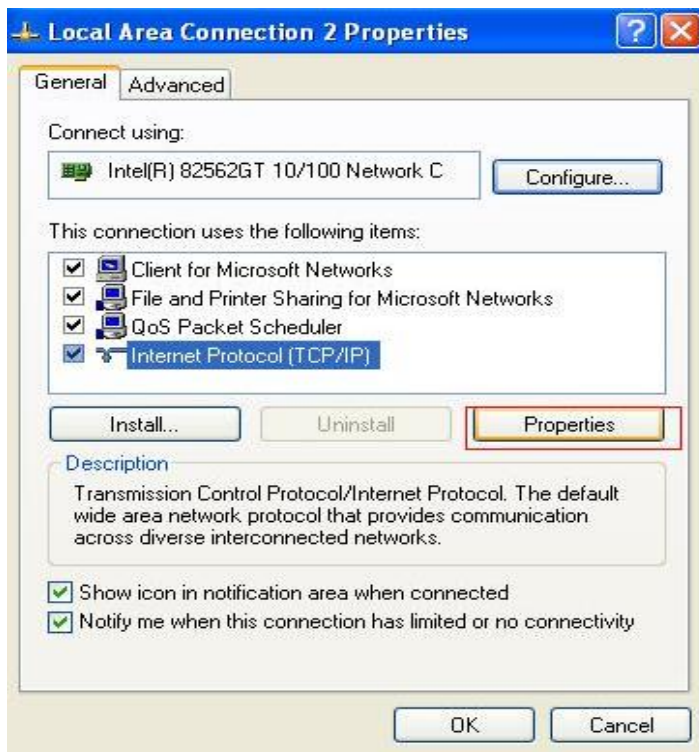
Din lista iconitelor Control panel se alege **Network Connections**



Apare fereastra Network Connections si aici se selecteaza **Local Area Connection** se apasa cu mouseul click dreapta dupa care **Properties** ca in imaginea care urmeaza:

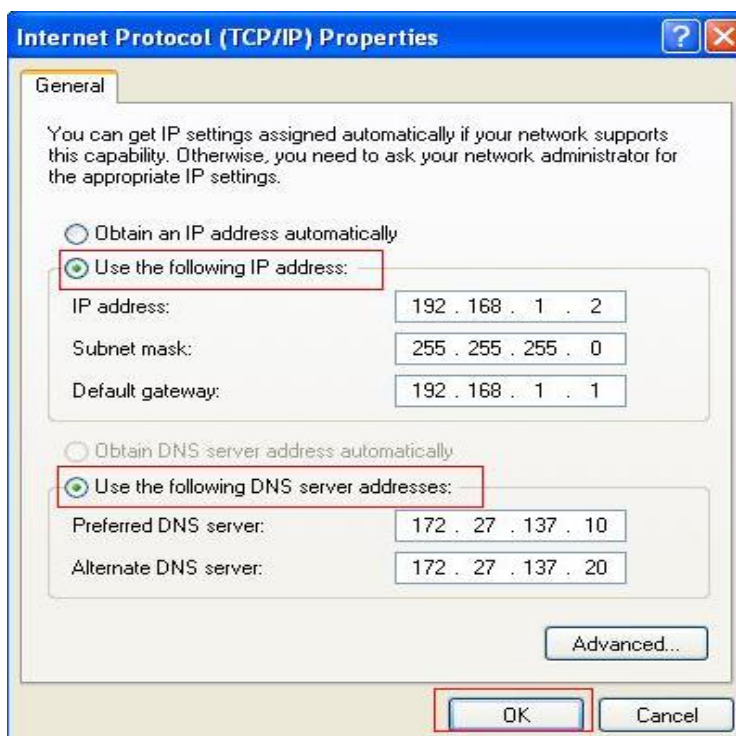


Dupa aceasta apare fereastra **Local Area Connection Properties**, aici se selecteaza optiunea **Internet Protocol (TCP/IP)** si se acceseaza butonul **Properties**

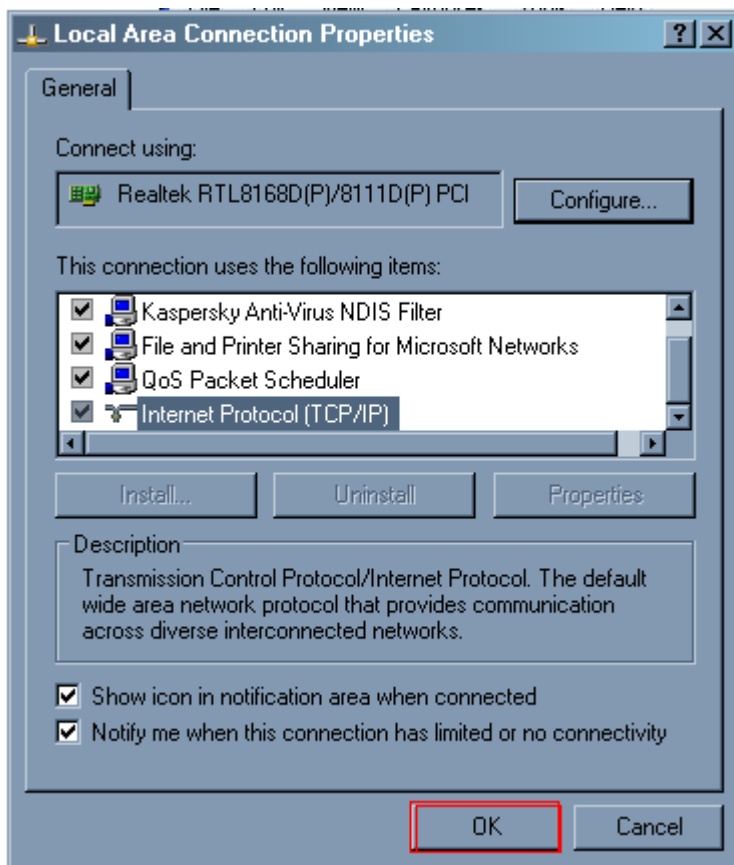


Apare fereastra **Internet Protocol TCP/IP Properties**

In fereastra care a aparat se alege optiunea: *Use the following IP address*



Dupa introducerea datelor se apasa butonul **OK**



Inca odata se apasa **OK**

Deschideți Internet Explorer sau alt Browser.

În bara de adrese introduceți următoarele:

<http://192.168.1.1>

Tastați Enter.

Trebuie sa apara fereastra de login a modemului asemanatoare cu cea din imagine de mai jos:



Va apărea forma de autorizare cu solicitarea Numelui de utilizator și parolei

Introduceți:

User Name: **admin**

Password: **admin**

Daca nu merge loginarea de mai sus atunci se accepta la

user name:**Administrator**

password:**qazwsx**

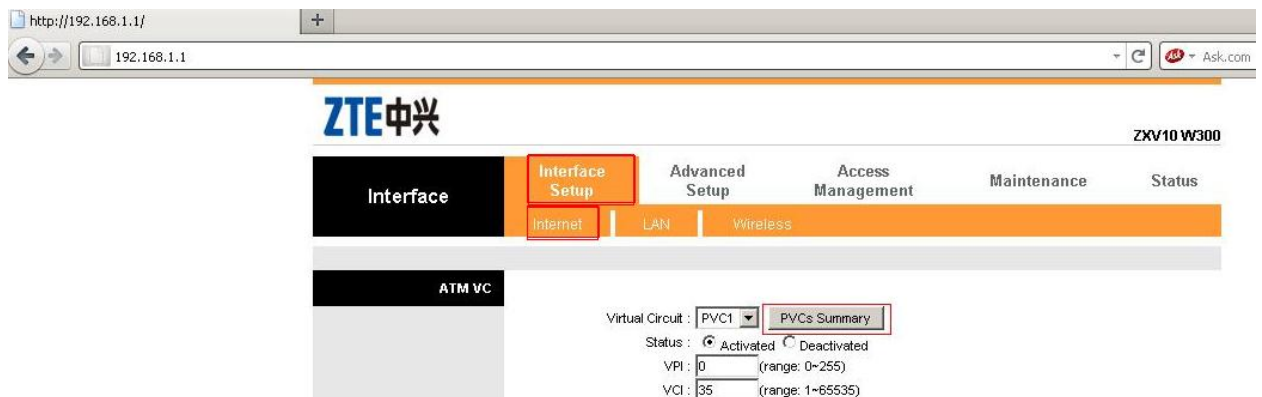
Tastati butonul **OK**

Acesind meniul modemului pe ecran trebuie sa apara o fereastra ,pentru a vizualiza statutul la modem :

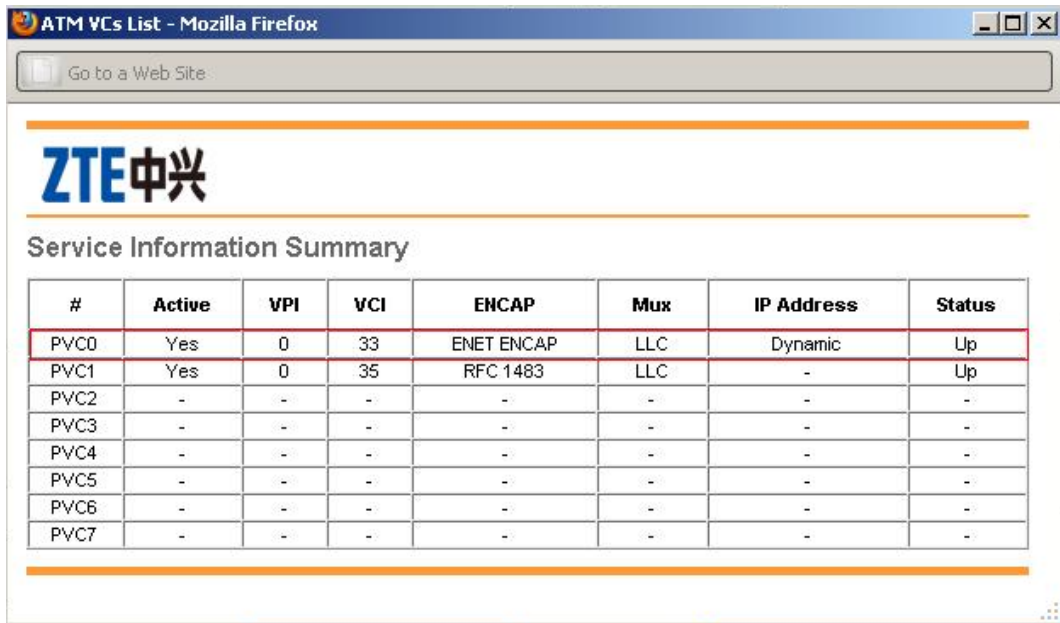
ZTE中兴 ZXV10 W300

Status	Interface Setup	Advanced Setup	Access Management	Maintenance	Status
	Device Info	System Log	Statistics		
Device Information	Firmware Version : W300V3.1.2a_DR0_MD MAC Address : 00:15:eb:f7:2c:5f				
LAN	IP Address : 192.168.1.1 Subnet Mask : 255.255.255.0 DHCP Server : Enabled				
WAN	Virtual Circuit : <input type="text" value="PVC0"/> Status : Connected Connection Type : Dynamic IP IP Address : 86.106.210.6 <input type="button" value="Renew"/> <input type="button" value="Release"/>				

Pentru a vizualiza care PVC(virtual circuit) este necesar de configurat pentru internet si sa nu intilnim careva erori in configurare se acceseaza meniul **Interface Setup** dupa care submeniul **Internet** si aici se acceseaza butonul *PVCs Summary* ca in imaginea de mai jos:



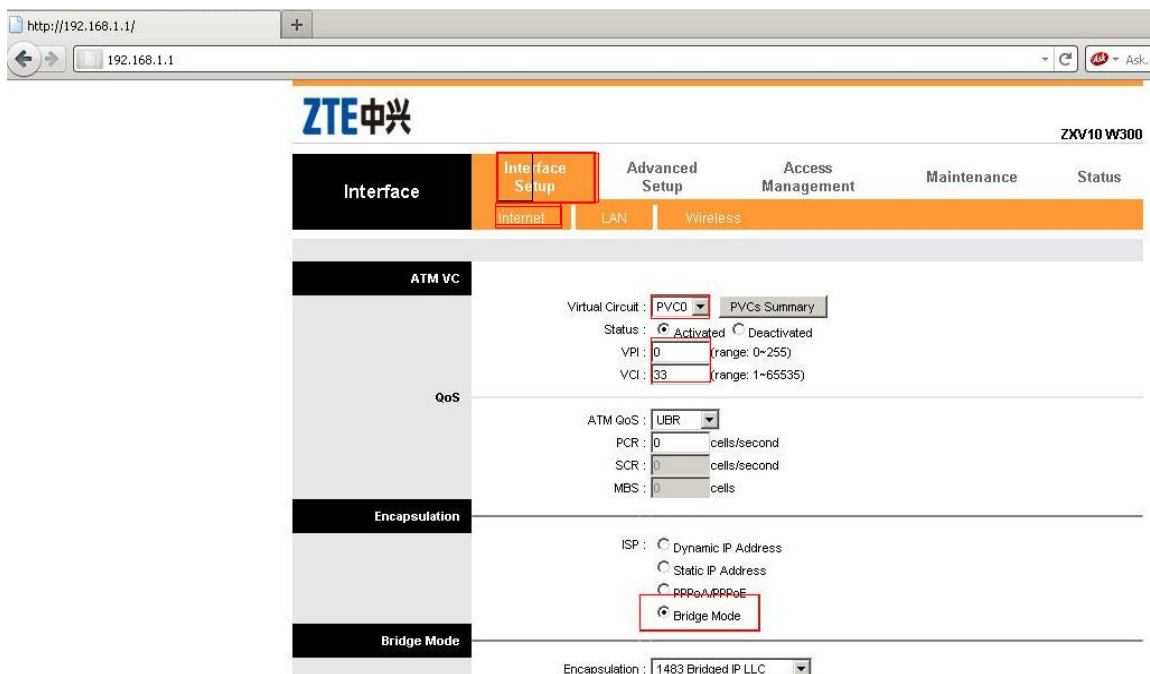
Accesind pasii de mai sus se ajunge la urmatoarea fereastra:



#	Active	VPI	VCI	ENCAP	Mux	IP Address	Status
PVC0	Yes	0	33	ENET ENCAP	LLC	Dynamic	Up
PVC1	Yes	0	35	RFC 1483	LLC	-	Up
PVC2	-	-	-	-	-	-	-
PVC3	-	-	-	-	-	-	-
PVC4	-	-	-	-	-	-	-
PVC5	-	-	-	-	-	-	-
PVC6	-	-	-	-	-	-	-
PVC7	-	-	-	-	-	-	-

In cazul nostru se configureaza PVC0 cum este aratat mai sus.

Cu mouseul aplicam functia **Interface Setup** dupa care se aplica submeniul **Internet** si se urmeaza pasii care sunt aratati ca in screenul de mai jos



Virtual Circuit : PVC0 PVPs Summary

Status : Activated Deactivated

VPI : 0 (range: 0-255)

VCI : 33 (range: 1-65535)

ATM GoS : UBR

PCR : 0 cells/second

SCR : 0 cells/second

MBS : 0 cells

ISP : Dynamic IP Address
 Static IP Address
 PPPoA/PPPoE
 Bridge Mode

Encapsulation : 1483 Bridged IP LLC

Dupa toate setarile facute se aplica butonul **SAVE**

La setarile modemului ZTE CII W300 de obicei se deconecteaza DHCP din setarile **Interface Setup ->LAN** cum este aratat in screenul care urmeaza :

The screenshot shows the ZTE W300 web interface. At the top left is the ZTE logo (中兴), and at the top right is the model number ZV10 W300. Below the logo is a navigation menu with tabs: Interface, Interface Setup, Advanced Setup, Access Management, Maintenance, and Status. Under the 'Interface Setup' tab, there are sub-tabs for Internet, LAN, and Wireless. The 'LAN' sub-tab is selected. The main content area is divided into sections: 'Router Local IP' and 'DHCP'. In the 'Router Local IP' section, the following fields are visible: Main IP Address (192.168.1.1), Main Subnet Mask (255.255.255.0), Alias IP Address (0.0.0.0), and Alias Subnet Mask (0.0.0.0). Below these are dropdown menus for Dynamic Route (RIP2-B) and Direction (None), and a Multicast dropdown (IGMP v2). The IGMP Snoop option is set to Enabled. In the 'DHCP' section, the DHCP option is set to Disabled. At the bottom of the page, there are 'SAVE' and 'CANCEL' buttons. Red boxes highlight the 'Interface Setup' tab, the 'LAN' sub-tab, the DHCP settings, and the 'SAVE' button.

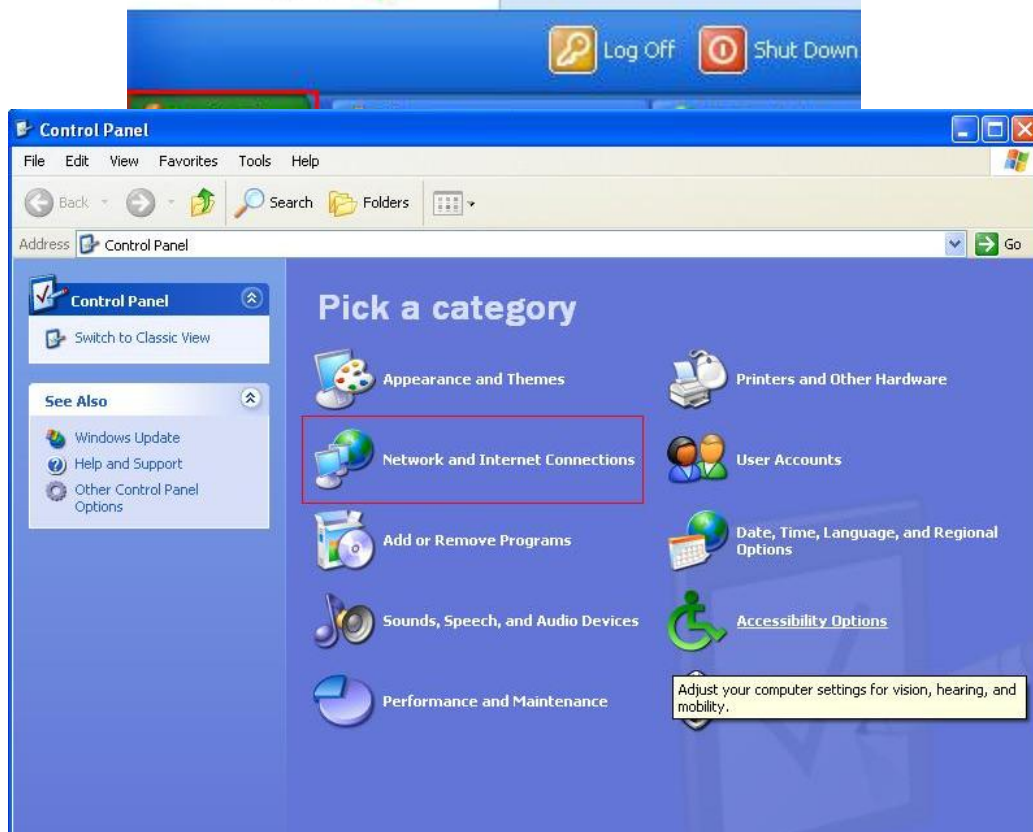
Se aplica DHCP *Disabled* si se aplica SAVE

Dupa ce se salveaza setarile necesare .Punem adresele IP automate.

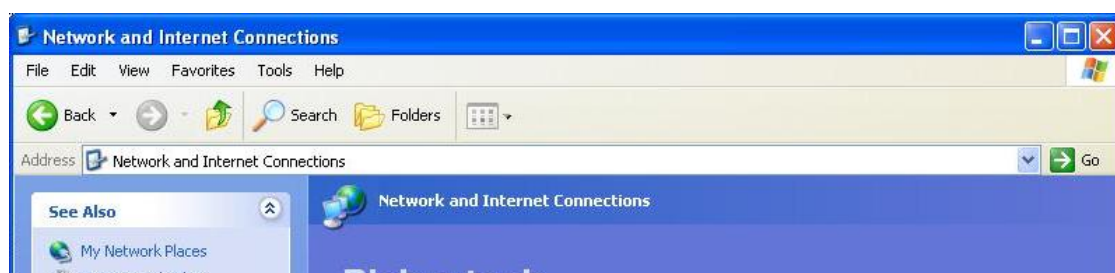
Se acceseaza meniul **START** dupa care **Control Panel**



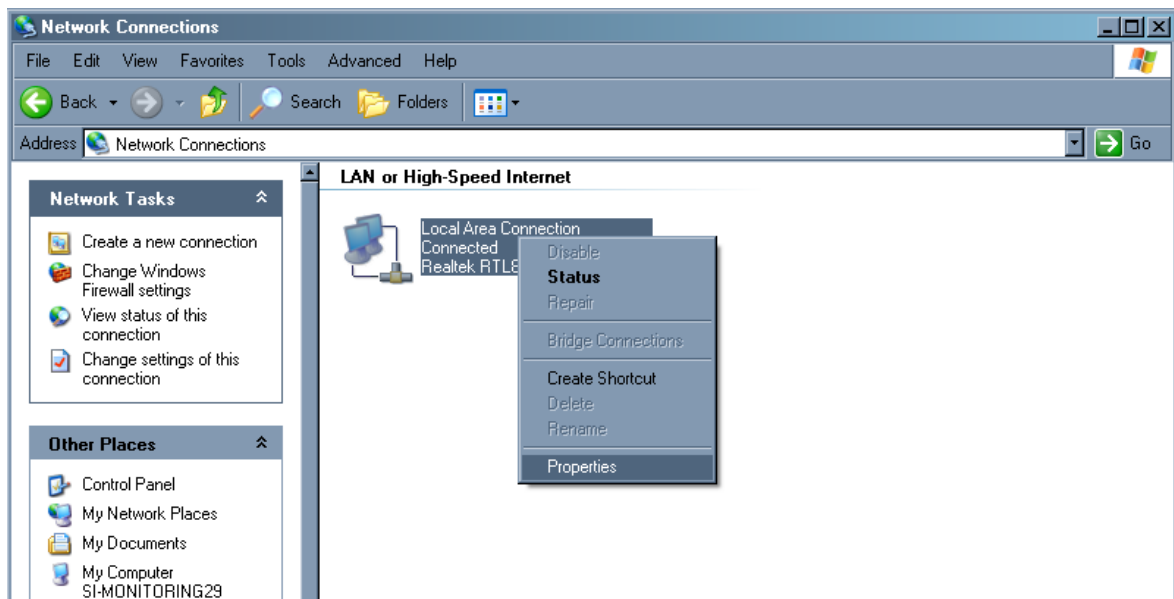
Se deschide fereastra **Control Panel**. Dupa asta se acceseaza **Network and Internet Connections**



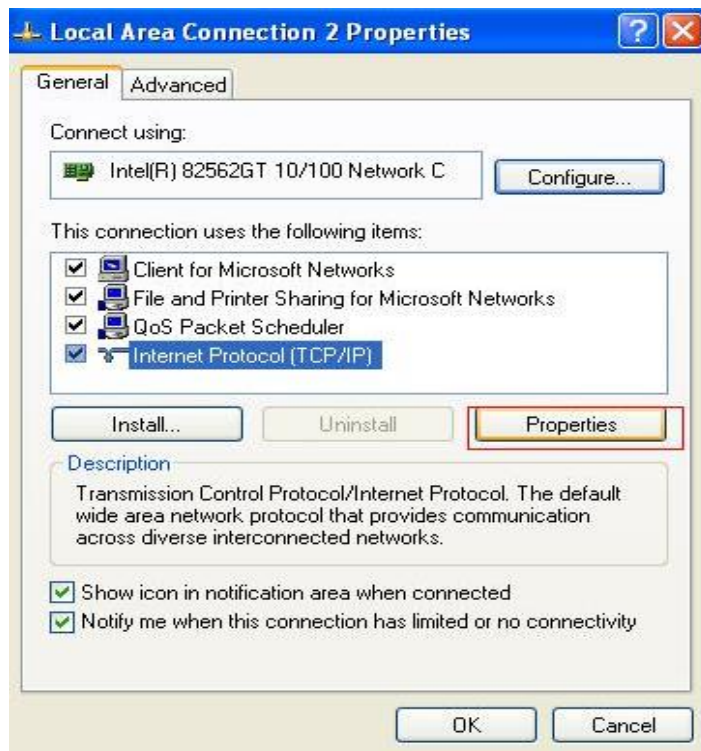
Din lista iconitelor Control panel se alege **Network Connections**



Apare fereastra Network Connections si aici se selecteaza **Local Area Connection** se apasa cu mouseul click dreapta dupa care **Properties** ca in imaginea care urmeaza:

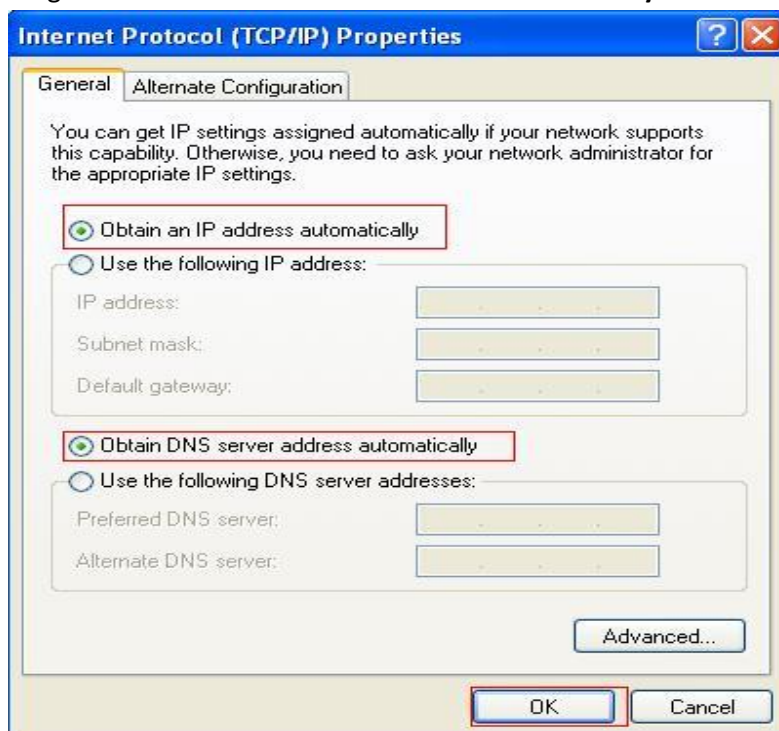


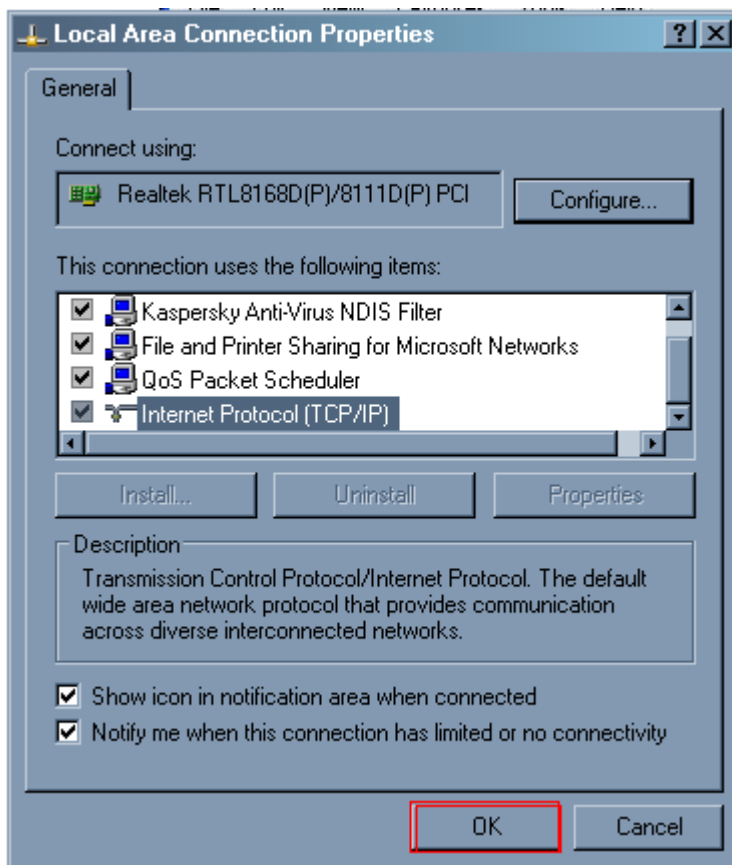
Dupa aceasta apare fereastra **Local Area Connection Properties**, aici se selecteaza optiunea **Internet Protocol (TCP/IP)** si se acceseaza butonul **Properties**



Apare fereastra **Internet Protocol TCP/IP Properties**

Alegem Obtiunea: **Obtain an IP address automatically**





Inca odata se apasa **OK**