

W300 Wi-Fi

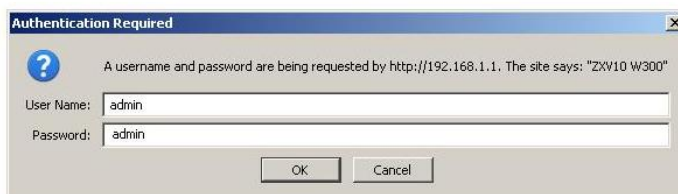
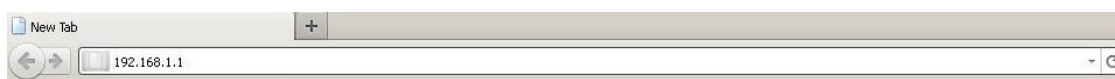
Deschideți Internet Explorer sau alt Browser.

În bara de adrese introduceți următoarele:

<http://192.168.1.1>

Tastați Enter.

Trebuie sa apara fereastra de login a modemului asemanatoare cu cea din imagine de mai jos:



Va apărea forma de autorizare cu solicitarea Numelui de utilizator și parolei

Introduceți:

User Name: **admin**

Password: **admin**

Daca nu merge loginarea de mai sus atunci se accepta la

user name:**Administrator**

password:**qazwsx**

Tastati butonul **OK**

Acesind meniul modemului pe ecran trebuie sa apara o fereastra ,pentru a vizualiza statutul la modem :

The screenshot displays the ZTE W300 modem web interface. At the top left is the ZTE logo, and at the top right is the model number 'ZXV10 W300'. The main navigation bar includes 'Status', 'Interface Setup', 'Advanced Setup', 'Access Management', 'Maintenance', and 'Status'. Below this, there are sub-menus: 'Device Info', 'System Log', and 'Statistics'. The 'Device Information' section is expanded, showing details for 'Device Information', 'LAN', 'WAN', and 'ADSL'. The 'WAN' section is highlighted with a red box, showing a 'Virtual Circuit' dropdown set to 'PVC0', a 'Status' of 'Connected', and 'Connection Type' of 'Dynamic IP'. It also lists IP Address (86.106.210.6), Subnet Mask (255.255.255.0), Default Gateway (86.106.210.1), Primary DNS (172.27.137.30), Secondary DNS (172.27.137.10), and NAT (Enabled). There are 'Renew' and 'Release' buttons next to the WAN details. The 'ADSL' section shows 'ADSL Firmware Version' (FwVer:3.12.7.0_TC3085 HwVer:T14.F7_5.0), 'Line State' (Showtime), 'Modulation' (ADSL2 PLUS), and 'Annex Mode' (ANNEX_A). At the bottom, there is a table for 'Downstream' and 'Upstream' statistics.

	Downstream	Upstream	
SNR Margin :	16.1	9.8	db
Line Attenuation :	3.1	3.3	db
Data Rate :	14080	1021	kbps

Pentru configurarea Wireless la modem este necesar de urmat pasii care sunt indicati mai jos:

The screenshot shows the web interface of a ZTE ZXV10 W300 modem. The browser address bar shows 'http://192.168.1.1/'. The page title is 'ZTE中兴' and the model is 'ZXV10 W300'. The navigation menu includes 'Interface', 'Interface Setup', 'Advanced Setup', 'Access Management', 'Maintenance', and 'Status'. Under 'Interface Setup', there are tabs for 'Internet', 'LAN', and 'Wireless'. The 'Wireless' tab is selected, showing the following settings:

- Access Point Settings:**
 - Access Point: Activated Deactivated
 - Channel: UNITED STATES (dropdown) | Auto (dropdown) | Current Channel: 11
 - Transmit Power: High (dropdown)
 - Beacon Interval: 100 ms (range: 20-1000)
 - RTS/CTS Threshold: 1500 bytes (range: 1500-2347)
 - Fragmentation Threshold: 2346 bytes (range: 256-2346, even numbers only)
 - DTIM: 1 (range: 1-255)
 - 802.11 b/g: 802.11b+g (dropdown)
 - Station Number: 4 (range: 0-16)
- Multiple SSIDs Settings:**
 - SSID Index: 1 (dropdown)
 - Broadcast SSID: Yes No
 - SSID: ZTE8
 - Authentication Type: WPA-PSK/WPA2-PSK (dropdown)
- WPA-PSK/WPA2-PSK Mixed Mode:**
 - Encryption: TKIP (dropdown)
 - Pre-Shared Key: password (8-63 ASCII characters or 64 hexadecimal characters)
- WDS Settings:**
 - WDS Mode: On Off
 - WDS Encryption Type: TKIP (dropdown)
 - WDS Key: (8-63 ASCII characters or 64 hexadecimal characters)
 - Mac Address #1: 00:00:00:00:00:00
 - Mac Address #2: 00:00:00:00:00:00
 - Mac Address #3: 00:00:00:00:00:00
 - Mac Address #4: 00:00:00:00:00:00

Dupa toate modificarile se apasa **SAVE**

Pentru a verifica daca la modem lukreaza optiunea *Wireless* pe modem este un indicator (beculet) care scrie WLAN, el trebuie sa clipeasca de culoare verde, in caz ca indicatorul WLAN pe modem nu arde atunci in spatele modemului este un buton de culoare neagra cu inscriptia Wifi(se afla linga butonul **SWITCH** care se deconecteaza modemul), trebuie de apasat si pe modem indicatorul WLAN se va arpinde verde.

