

W300 IPTV

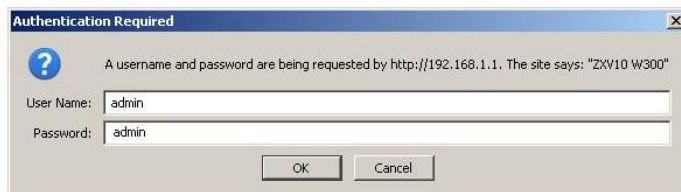
Deschideți Internet Explorer sau alt Browser.

În bara de adrese introduceți următoarele:

<http://192.168.1.1>

Tastați Enter.

Trebuie sa apara fereastra de login a modemului asemanatoare cu cea din imagine de mai jos:



Va apărea forma de autorizare cu solicitarea Numelui de utilizator și parolei

Introduceți:

User Name: **admin**

Password: **admin**

Daca nu merge loginarea de mai sus atunci se accepta la

user name:**Administrator**

password:**qazwsx**

Tastati butonul **OK**

Acesind meniul modemului pe ecran trebuie sa apara o fereastra ,pentru a vizualiza statutul la modem :



ZXV10 W300

Status | Interface Setup | Advanced Setup | Access Management | Maintenance | **Status**

Device Info | System Log | Statistics

Device Information

Firmware Version : W300V3.1.2a_DR0_MD
MAC Address : 00:15:eb:f7:2c:5f

LAN

IP Address : 192.168.1.1
Subnet Mask : 255.255.255.0
DHCP Server : Enabled

WAN

Virtual Circuit : PVC0
Status : Connected
Connection Type : Dynamic IP
IP Address : 86.106.210.6
Subnet Mask : 255.255.255.0
Default Gateway : 86.106.210.1
Primary DNS : 172.27.137.30
Secondary DNS : 172.27.137.10
NAT : Enabled

Renew | Release

ADSL

ADSL Firmware Version : FwVer:3.12.7.0_TC3085 HwVer:T14.F7_5.0
Line State : Showtime
Modulation : ADSL2 PLUS
Annex Mode : ANNEX_A

	Downstream	Upstream	
SNR Margin :	16.1	9.8	db
Line Attenuation :	3.1	3.3	db
Data Rate :	14080	1021	kbps

modemului se alege meniul **Interface Setup** si submeniul **Internet**. La modem se alege **PVC1** , la vpi se aplica valoarea 0 la vci valoarea 35 ,modemul se configureaza *bridge mode*, in cazul dat ca in imaginea de mai jos

ZTE中兴 | ZXV10 W300

Interface | Interface Setup | Advanced Setup | Access Management | Maintenance | Status

Internet | LAN | Wireless

ATM VC

Virtual Circuit : PVC1 | PVCs Summary
Status : Activated Deactivated
VPI : 0 (range: 0-255)
VCI : 35 (range: 1-65535)

QoS

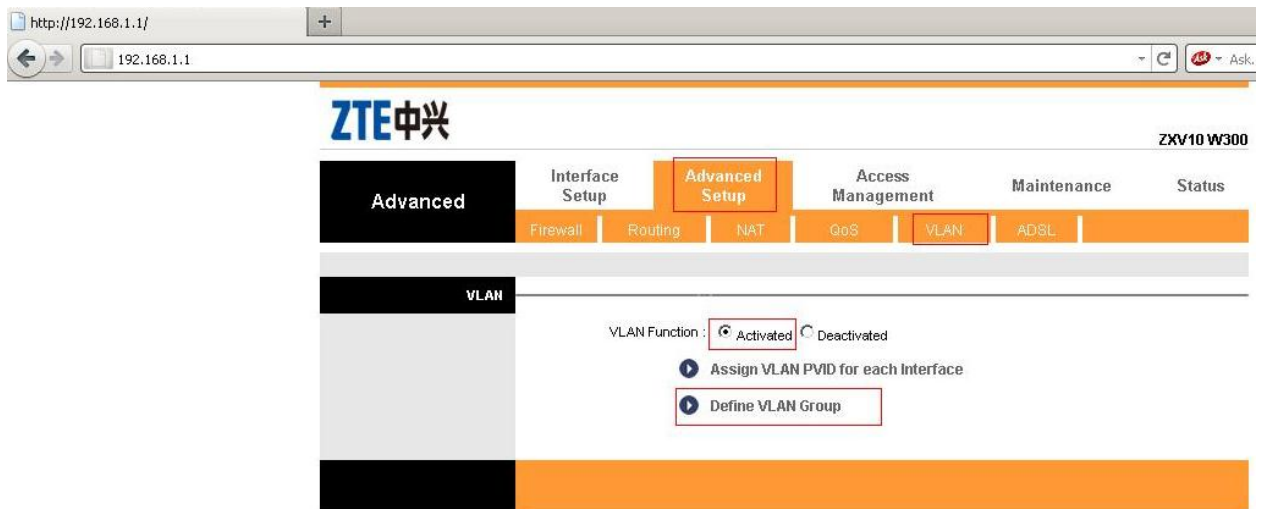
ATM QoS : UBR
PCR : 0 cells/second
SCR : 0 cells/second
MBS : 0 cells

Encapsulation

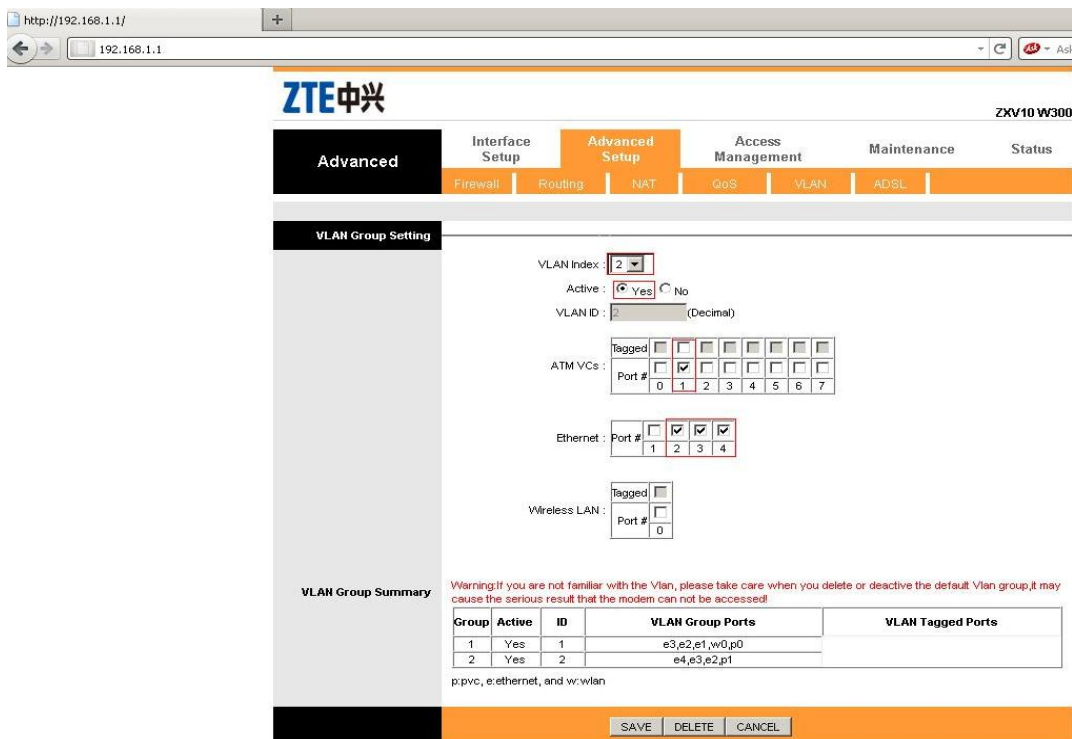
ISP : Dynamic IP Address
 Static IP Address
 PPPoA,PPPoE
 Bridge Mode

Pentru configurarea modemului ZTE CII in cazul cind abonatul are 1 calculator si 3 televizoare si in cazul cind cablurile sunt conectate corect (adica modemul ZTE CII W300 avind 4 porturi,fiecare avind inscriptia **LAN1-LAN4**,cablu de la calculator se conecteaza in **LAN1**,televizoarele se conecteaza in celelalte **LAN**-uri).

Se aplica pasii dupa cum urmeaza:Se alege meniul **Advanced Setup** se alege **VLAN**, *Vlan Function* se alege optiunea **Activated** dupa care se acceseaza opriunea *Define VLAN Group*



La monitor apare imaginea care se fac setarile ca in screenul de mai jos:



Dupa toate setarile facute se acceseaza butonul **SAVE**

La setarile modemului ZTE CII W300 pentru IPTV este necesat de deconectat DHCP din setarile **Interface Setup** ->**LAN** cum este aratat in screenul care urmeaza :

The screenshot shows the ZTE W300 web interface. At the top left is the ZTE logo, and at the top right is the model number 'ZXV10 W300'. Below the logo is a navigation menu with 'Interface Setup' highlighted in orange. Under 'Interface Setup', there are three sub-tabs: 'Internet', 'LAN' (highlighted in orange), and 'Wireless'. The main content area is divided into sections. The 'Router Local IP' section contains the following fields: 'Main IP Address' (192.168.1.1), 'Main Subnet Mask' (255.255.255.0), 'Alias IP Address' (0.0.0.0), and 'Alias Subnet Mask' (0.0.0.0). Below these are 'Dynamic Route' (RIP2-B), 'Direction' (None), 'Multicast' (IGMP v2), and 'IGMP Snoop' (radio buttons for Disabled and Enabled, with Enabled selected). The 'DHCP' section is highlighted with a red box and contains radio buttons for 'Disabled', 'Enabled', and 'Relay', with 'Disabled' selected. At the bottom of the page, there are 'SAVE' and 'CANCEL' buttons, with 'SAVE' highlighted by a red box.

Se aplica DHCP *Disabled* si se aplica SAVE