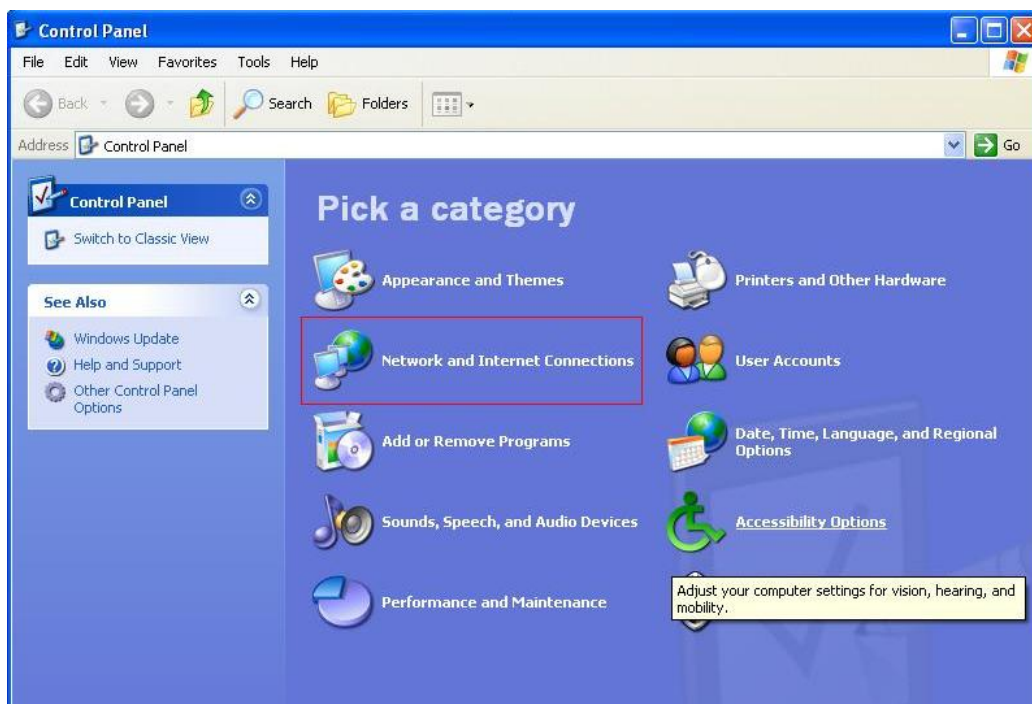


Tp-link 8610

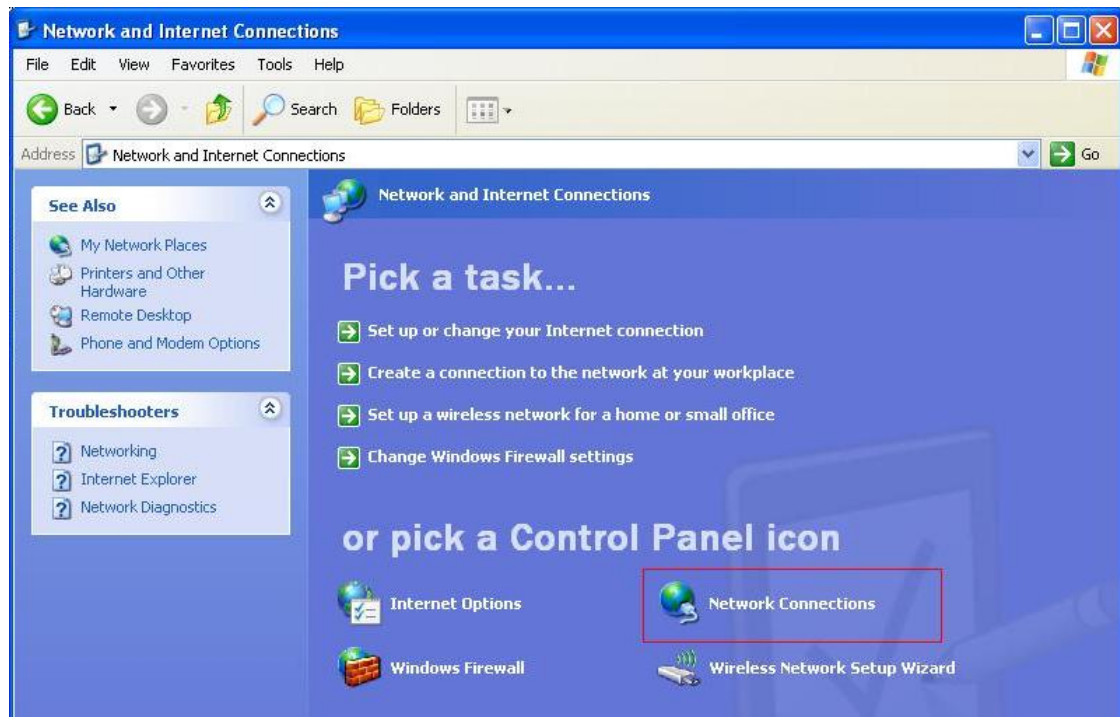
Se acceseaza meniul **START** dupa care **Control Panel**



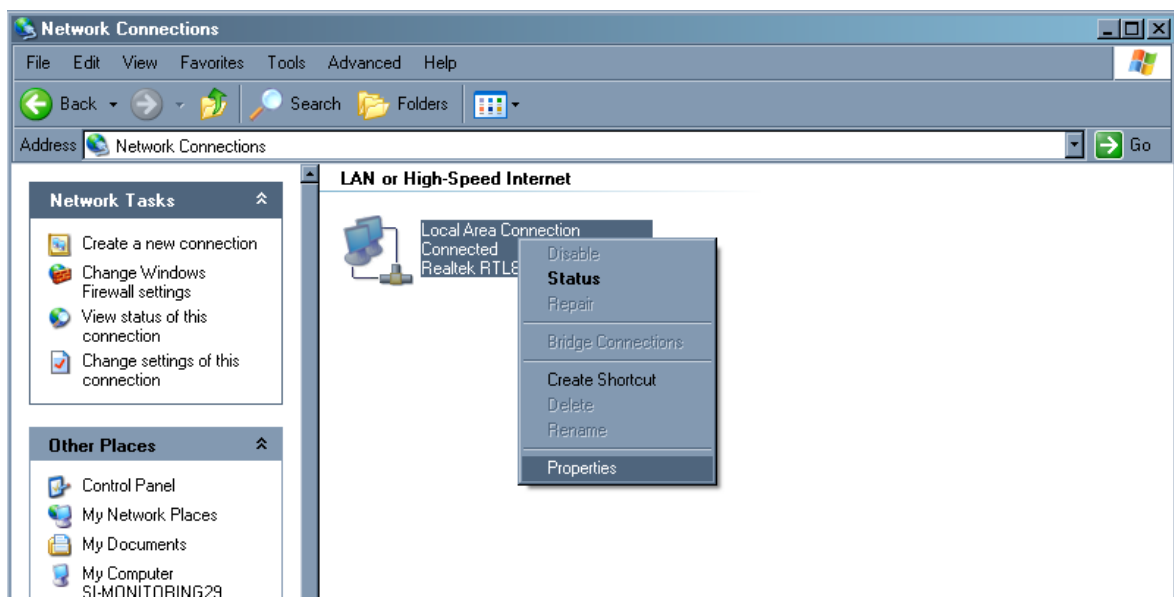
Se deschide fereastra Control Panel. Dupa asta se acceseaza **Network and Internet Connections**



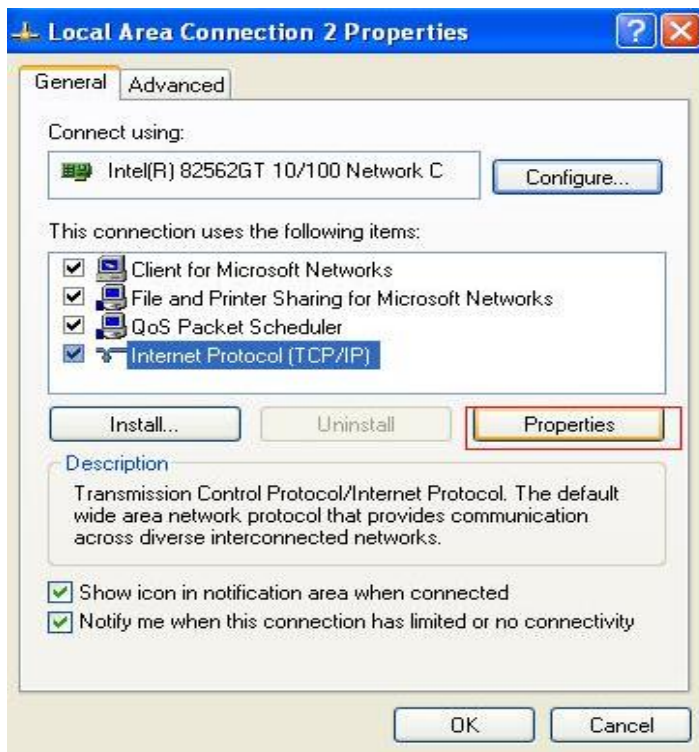
Din lista iconitelor Control panel se alege **Network Connections**



Apare fereastra Network Connections si aici se selecteaza **Local Area Connection** se apasa cu mouseul click dreapta dupa care **Properties** ca in imaginea care urmeaza:

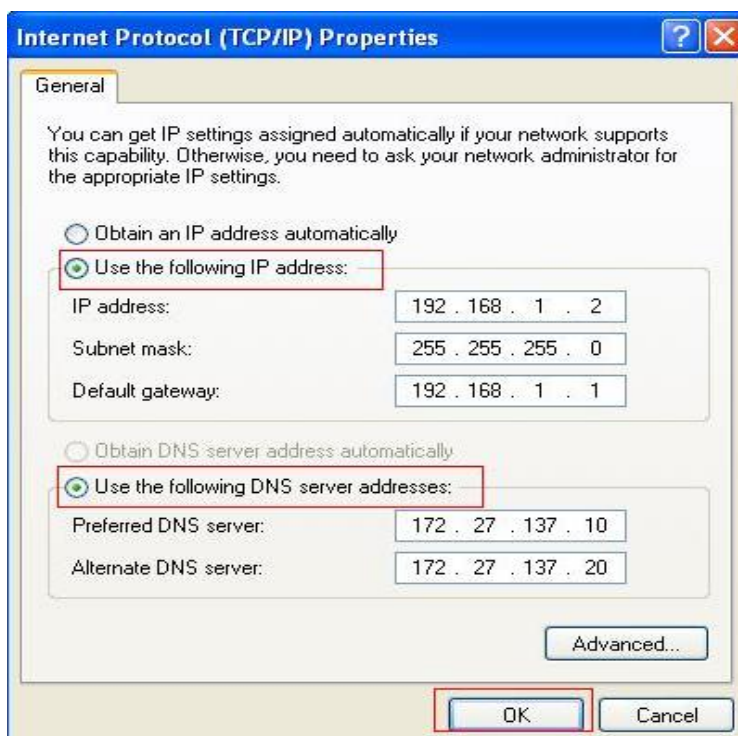


Dupa aceasta apare fereastra **Local Area Connection Properties**, aici se selecteaza optiunea **Internet Protocol (TCP/IP)** si se acceseaza butonul **Properties**

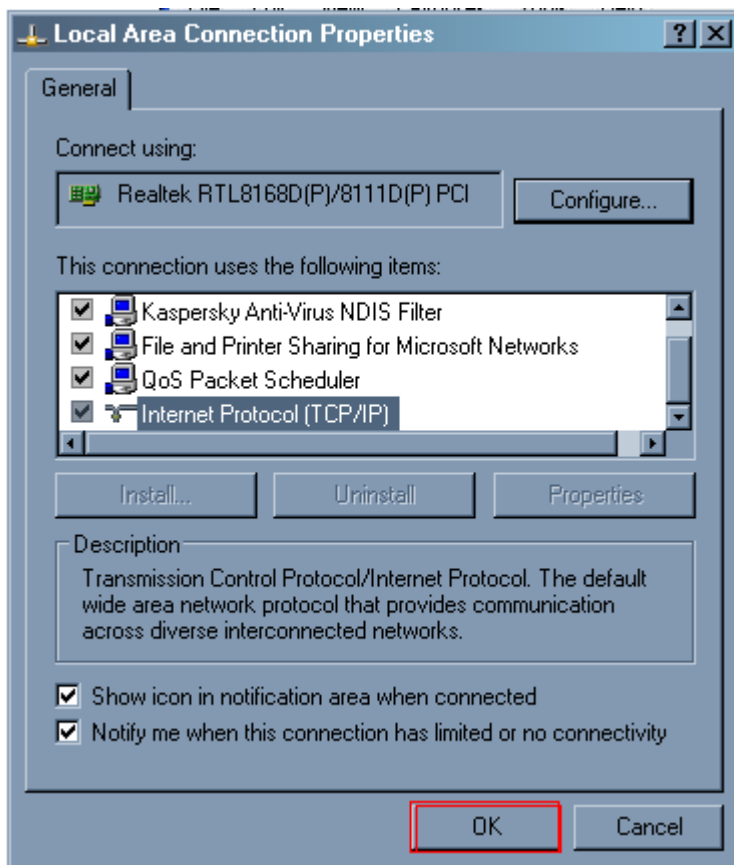


Apare fereastra **Internet Protocol TCP/IP Properties**

In fereastra care a aparat se alege optiunea: *Use the following IP address*



Dupa introducerea datelor se apasa butonul **OK**



Inca odata se apasa **OK**

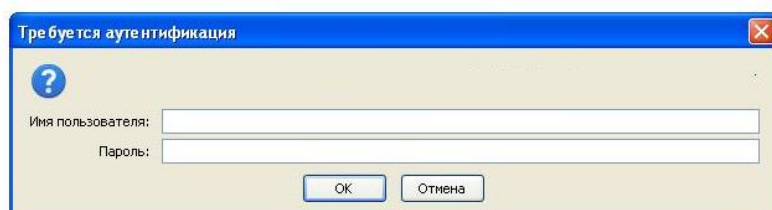
Dupa toate configurarile cartei de retea deschideți Internet Explorer sau alt Browser.

În bara de adrese introduceți următoarele:

<http://192.168.1.1>

Tastați Enter.

Trebuie sa apara fereastra de login a modemului asemanatoare cu cea din imagine de mai jos:



Va apărea forma de autorizare cu solicitarea Numelui de utilizator și parolei

Introduceți:

User Name: **admin**

Password: **admin**



Требуется аутентификация

Имя пользователя:

Пароль:

Tastati butonul **OK**

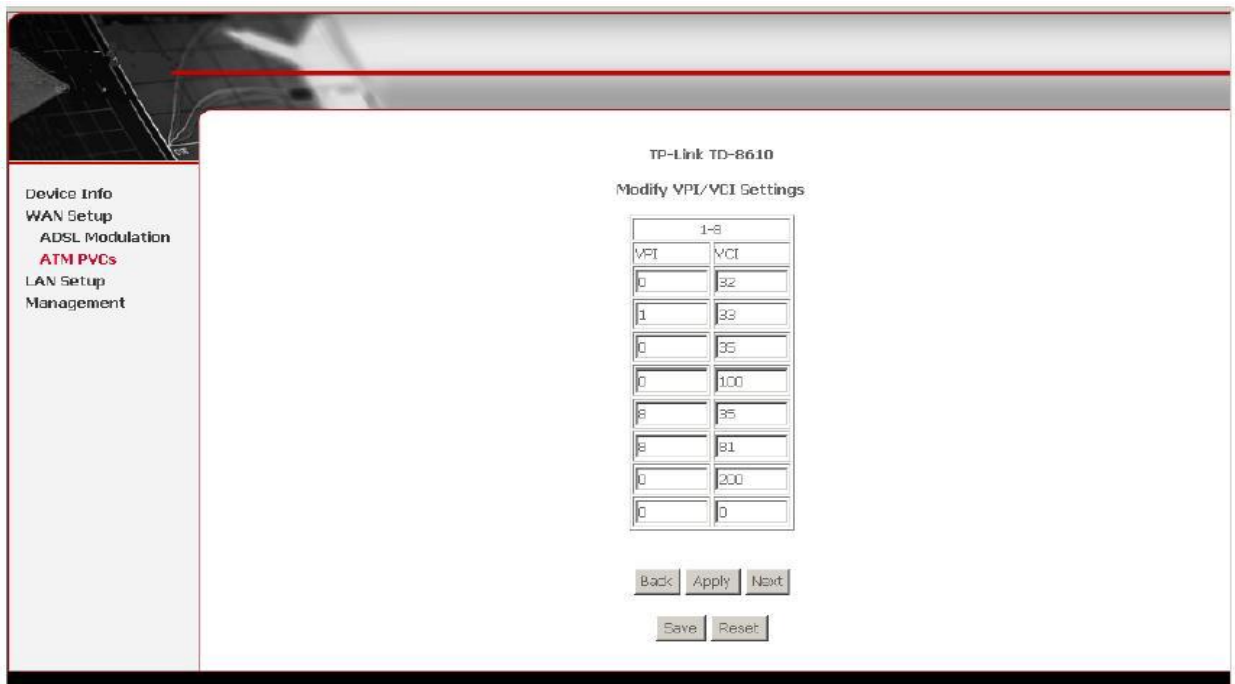
Device Info
WAN Setup
LAN Setup
Management

TP-Link TD-8610

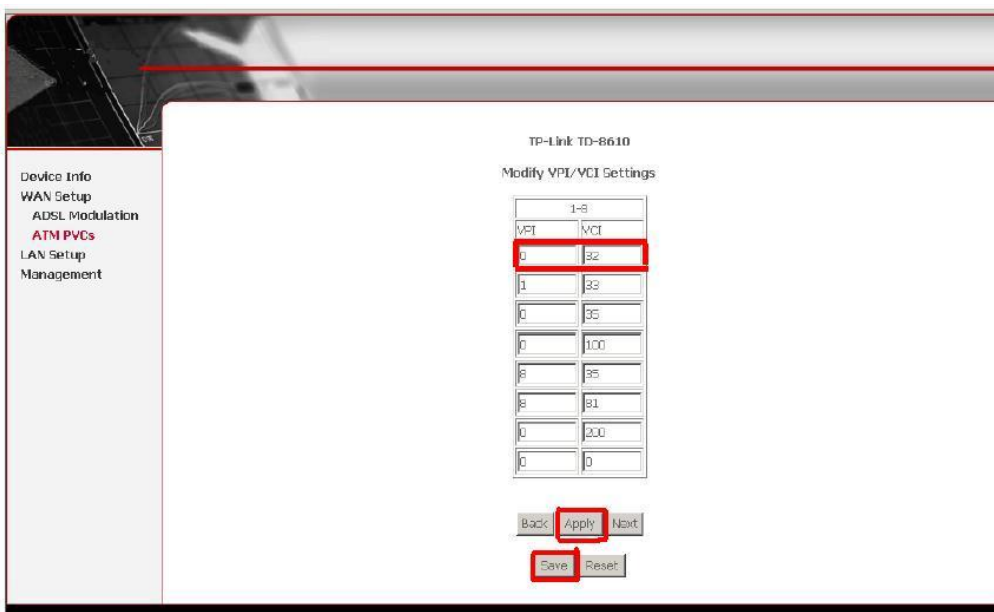
Version:	BCM6338 2.04B.02-A2pB019b8.d15m
Firmware:	bcm95330_tinybr.w
Hardware:	system/hw version
Serial Number:	serial number
MAC address:	02:10:18:01:00:01

ADSL Statistics

Status:	Idle	
Channel:		
Mode:		
	Downstream	Upstream
Rate (Kbps):		
SNR Margin (dB):		
Attenuation (dB):		
Super Frames:		
Super Frame Errors:		



In screen care e anexat mai jos VPI si VCI punem (VPI-0 / VCI-33).Accesam butonul Apply si apoi Save.

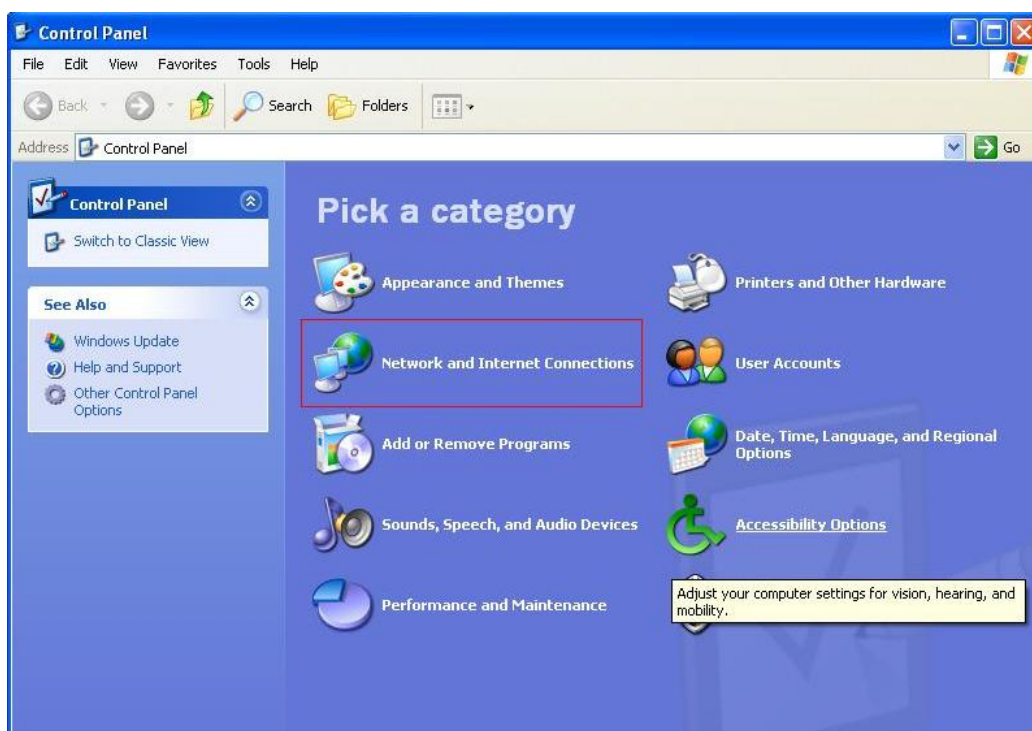


Dupa ce se salveaza setarile necesare .Punem adresele IP automate.

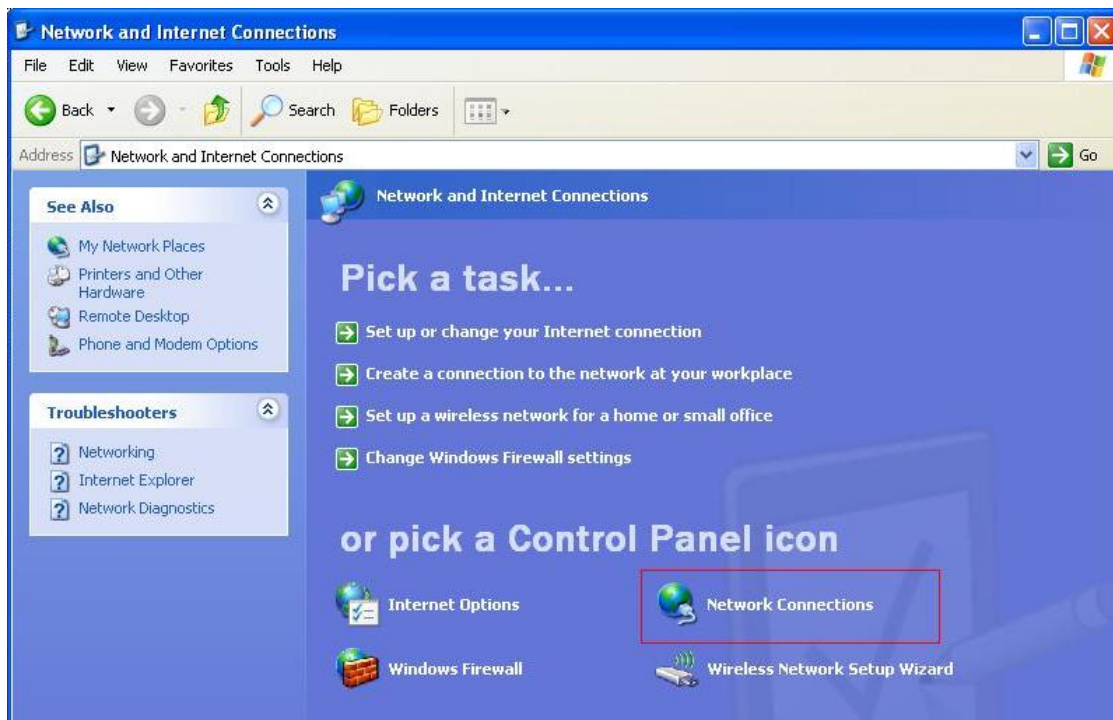
Se acceseaza meniul **START** dupa care **Control Panel**



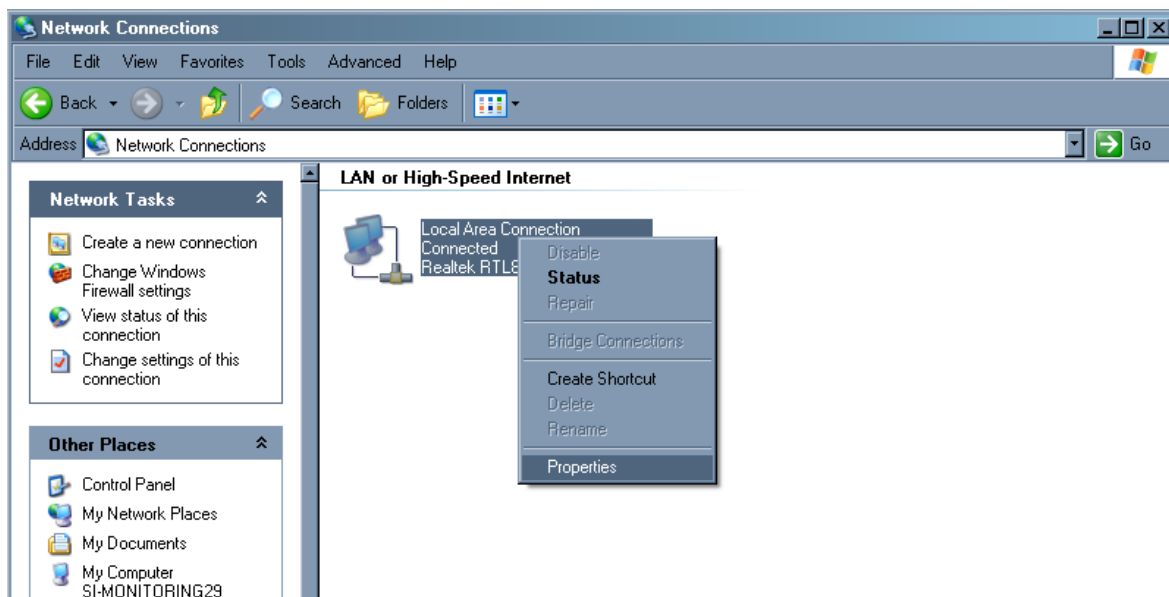
Se deschide fereastra Control Panel. Dupa asta se acceseaza **Network and Internet Connections**



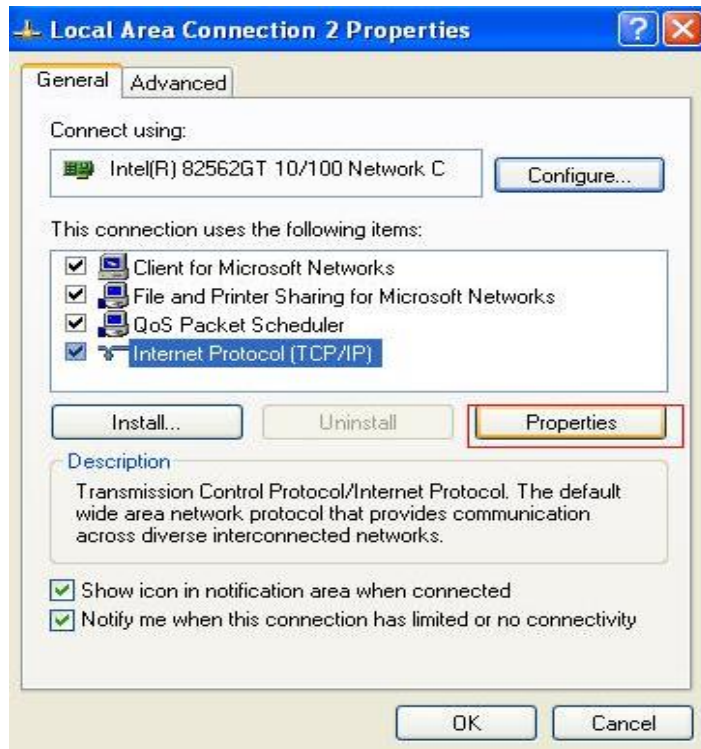
Din lista iconitelor Control panel se alege **Network Connections**



Apare fereastra Network Connections si aici se selecteaza **Local Area Connection** se apasa cu mouseul click dreapta dupa care **Properties** ca in imaginea care urmeaza:



Dupa aceasta apare fereastra **Local Area Connection Properties**, aici se selecteaza optiunea **Internet Protocol (TCP/IP)** si se acceseaza butonul **Properties**



Apare fereastra **Internet Protocol TCP/IP Properties**

Alegem Obtiunea: **Obtain an IP address automatically**

