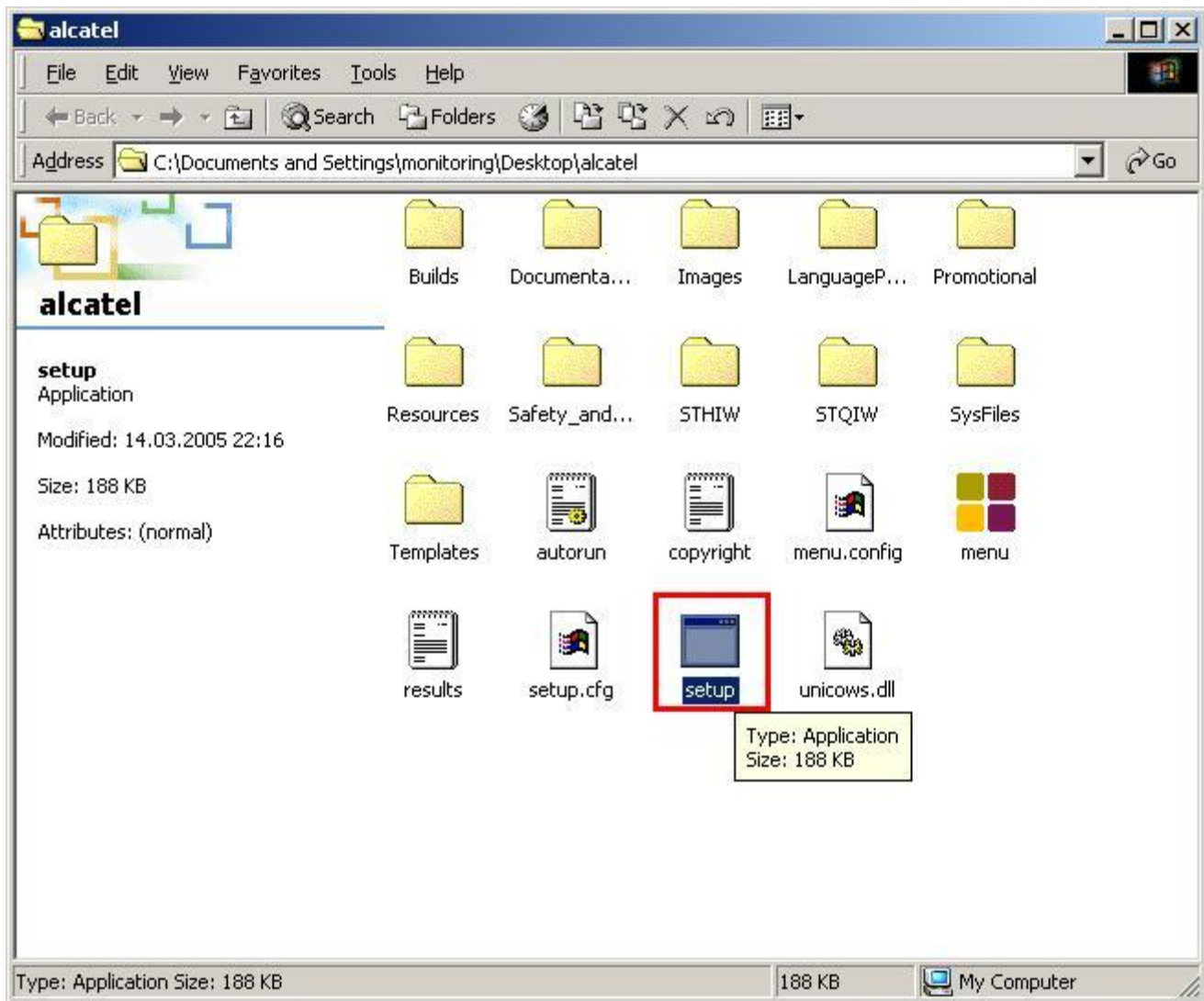
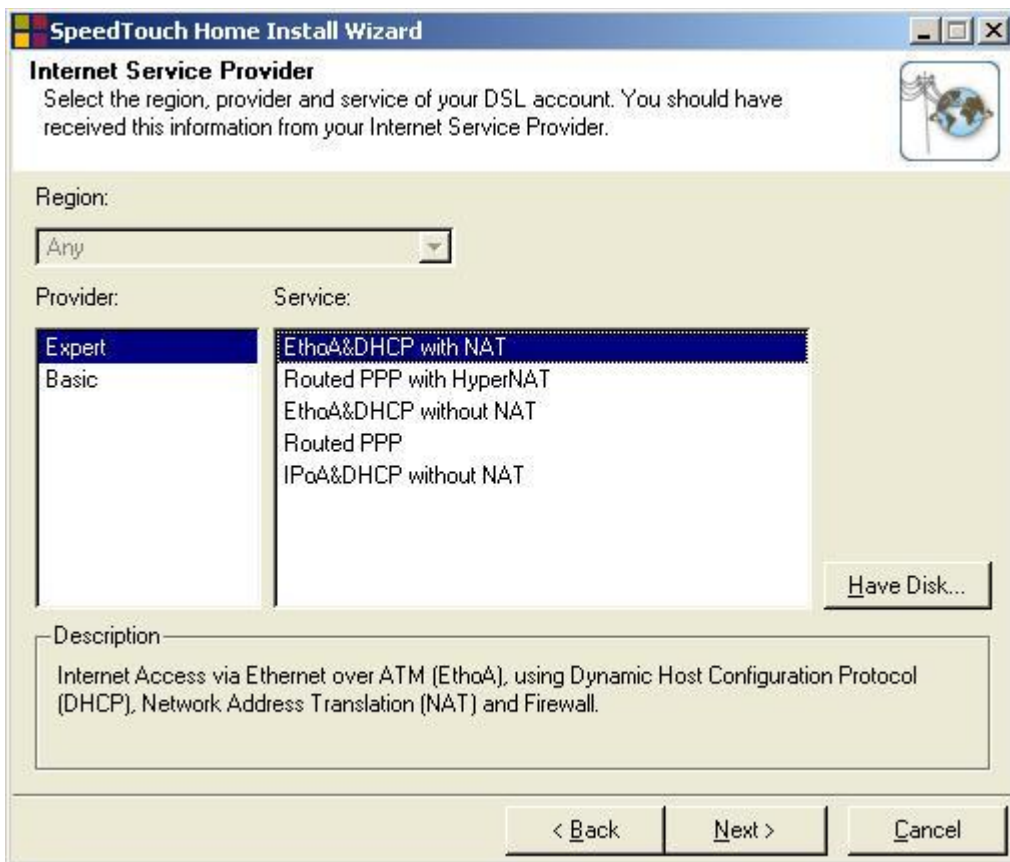
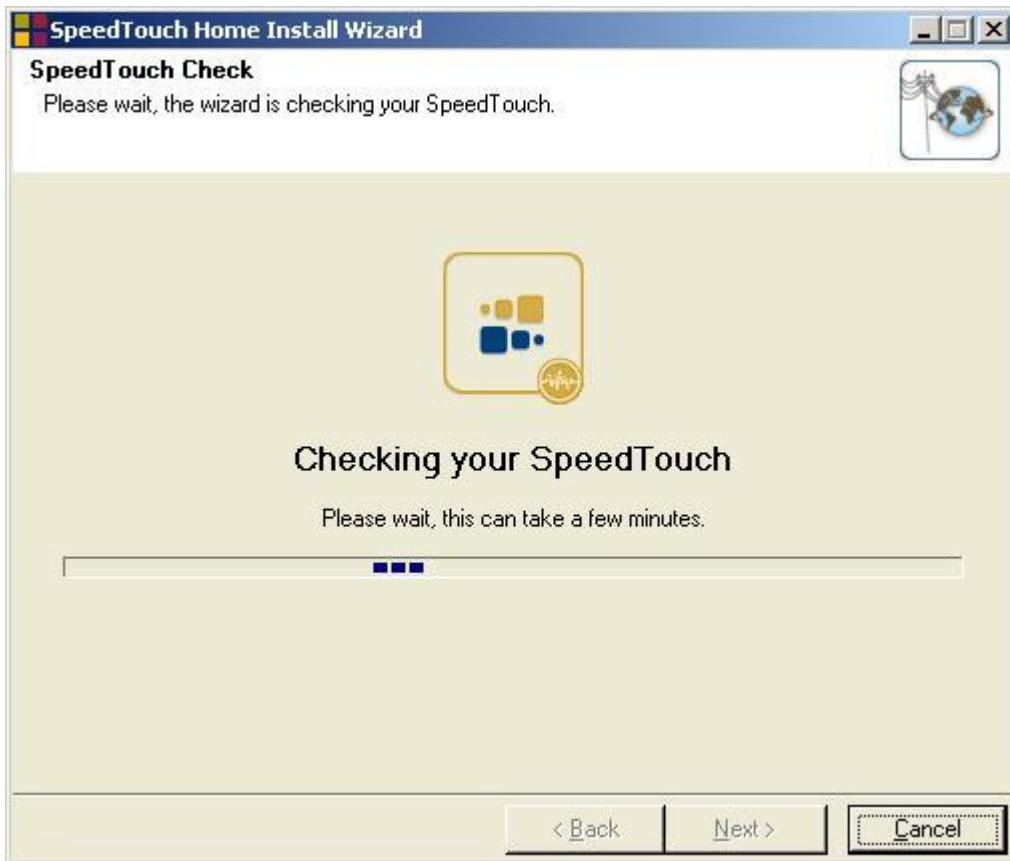


# Speed Router Bridge







**SpeedTouch Home Install Wizard**

**Routed EthoA Service**  
Specify the Virtual Channel; this information should be provided by your ISP.

VPI/VCI

0.33
0.33
0.34
0.35
0.36
0.37
0.38
0.100
1.32
1.33
1.100

< Back    Next >    Cancel

**SpeedTouch Home Install Wizard**

**Dynamic DNS**  
Specify setting of your Dynamic DNS service provider. Click Next if Dynamic DNS is not used.

Service Provider

none
------

Select your Dynamic DNS service provider in the list (none for no Dynamic DNS).

Host Name

Provide your Dynamic DNS host name (e.g. myhost.dyndns.org)

User Name

Enter your Dynamic DNS service username.

Password

Enter your Dynamic DNS service password.

< Back    Next >    Cancel

**SpeedTouch Home Install Wizard**

**Time Configuration**  
Specify configuration for automatic time configuration on the SpeedTouch.

Primary Time Server   
Enter a time server name (e.g. ntp.myisp.com)

Secondary Time Server   
Enter a time server name (e.g. ntp.myisp.com)

Enable Automatic Time Configuration

< Back   Next >   Cancel

**SpeedTouch Home Install Wizard**

**SpeedTouch Security**  
Specify the Administrator user name and password to protect SpeedTouch.

User Name   
Enter user name.

Password   
Enter your password.


Confirm Password   
Re-enter your password.

< Back   Next >   Cancel

**SpeedTouch Home Install Wizard**

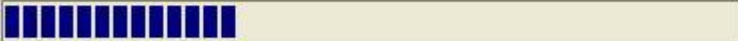
**Configuration of SpeedTouch**

Please wait, the wizard is setting up your SpeedTouch and local network.



The wizard will automatically set up your SpeedTouch through following tasks:

- ✓ Identification of SpeedTouch
- ▶ **Configuration of SpeedTouch**
  - Verification of SpeedTouch configuration
  - Configuration of computer

 32%

< Back   Next >   Cancel