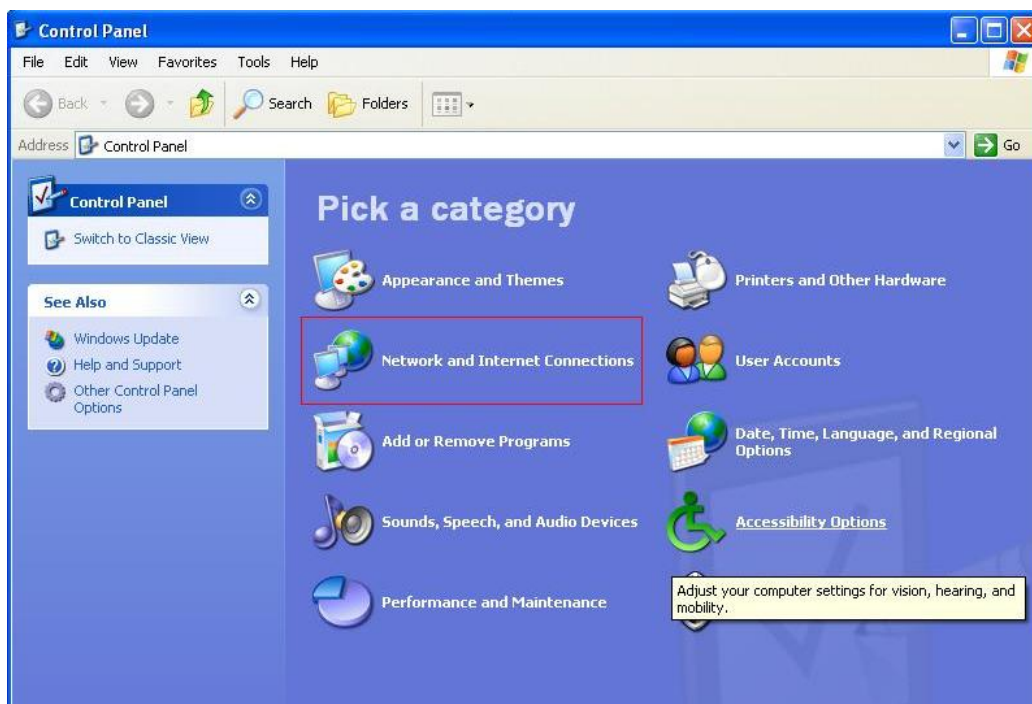


Regim router

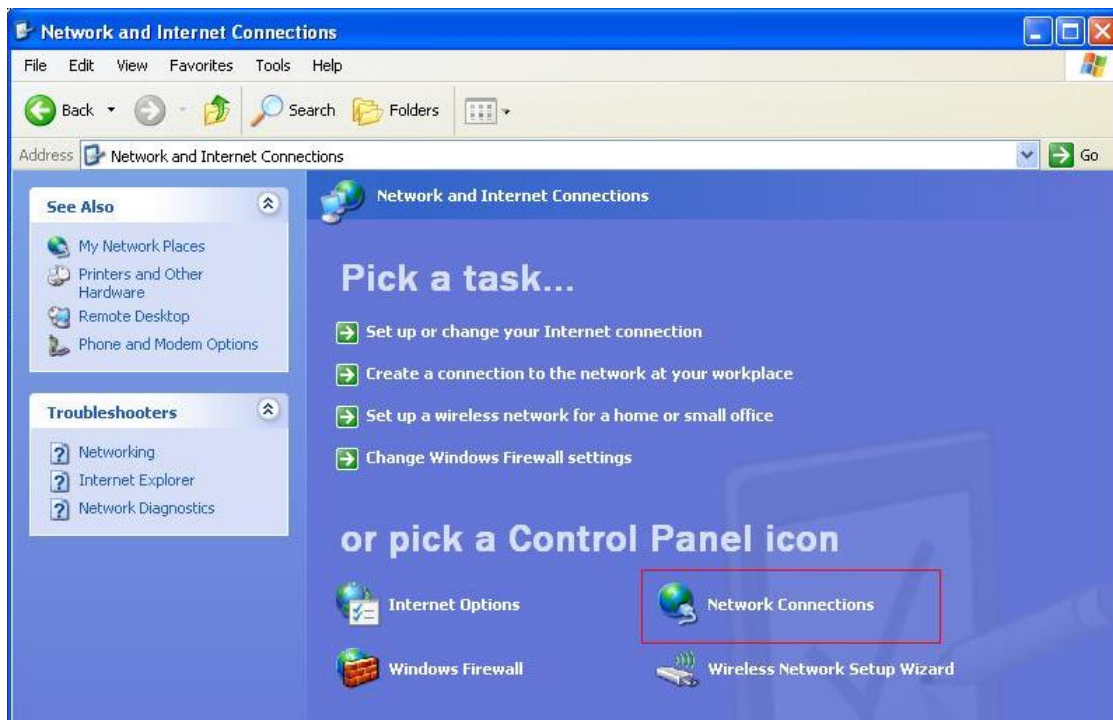
Se acceseaza meniul **START** dupa care **Control Panel**



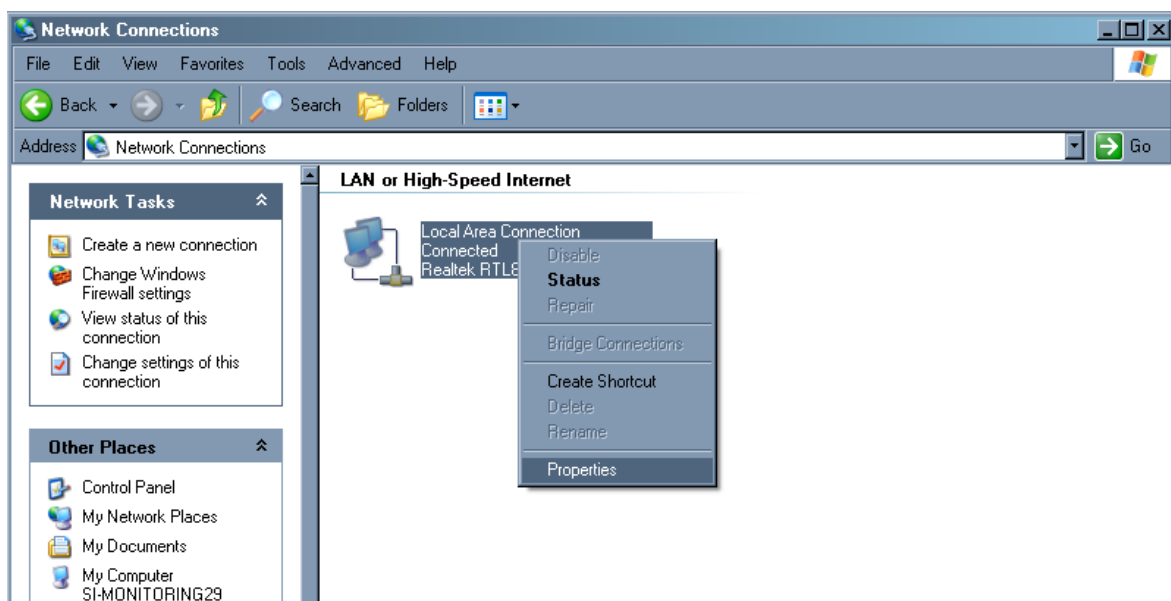
Se deschide fereastra Control Panel. Dupa asta se acceseaza **Network and Internet Connections**



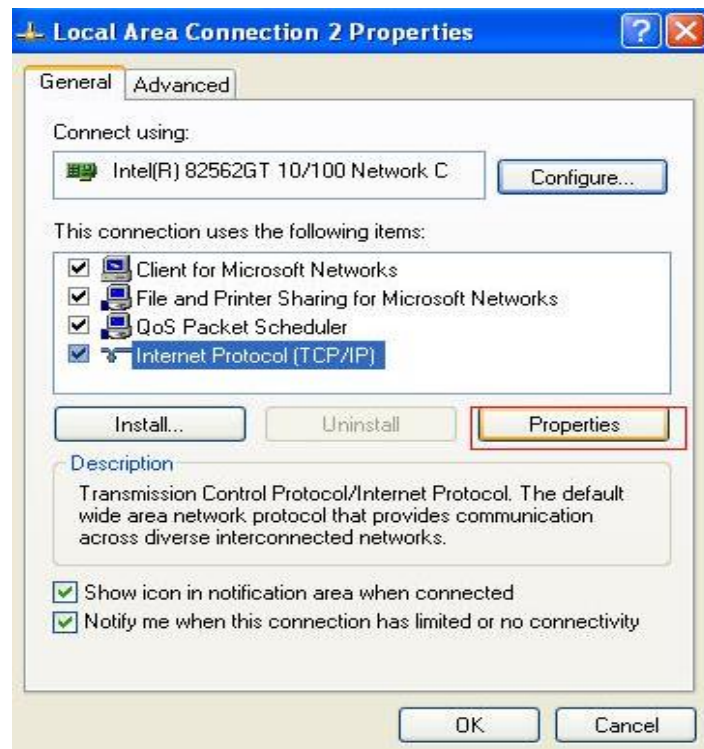
Din lista iconitelor Control panel se alege **Network Connections**



Apare fereastra Network Connections si aici se selecteaza **Local Area Connection** se apasa cu mouseul click dreapta dupa care **Properties** ca in imaginea care urmeaza:



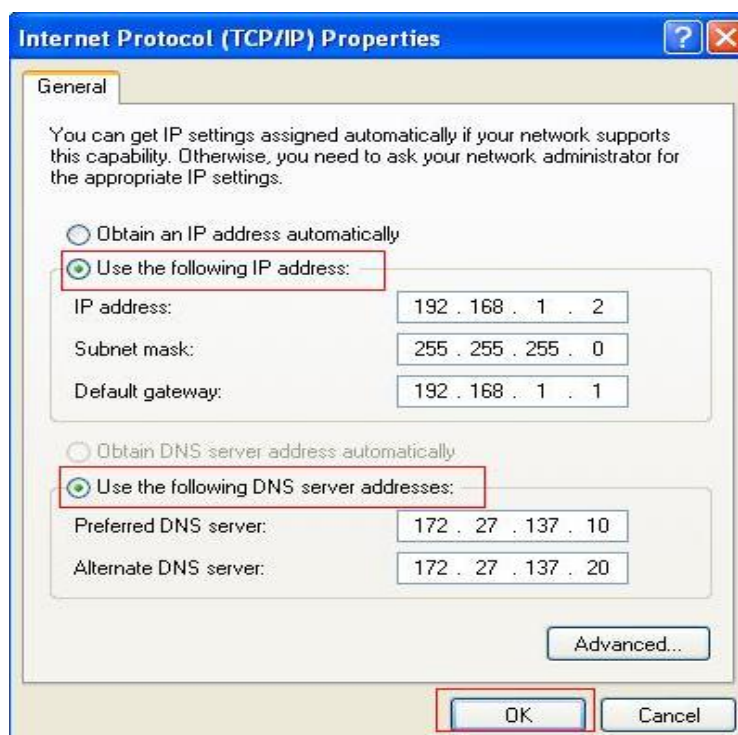
Dupa aceasta apare fereastra **Local Area Connection Properties**, aici se selecteaza optiunea **Internet Protocol (TCP/IP)** si se acceseaza butonul **Properties**



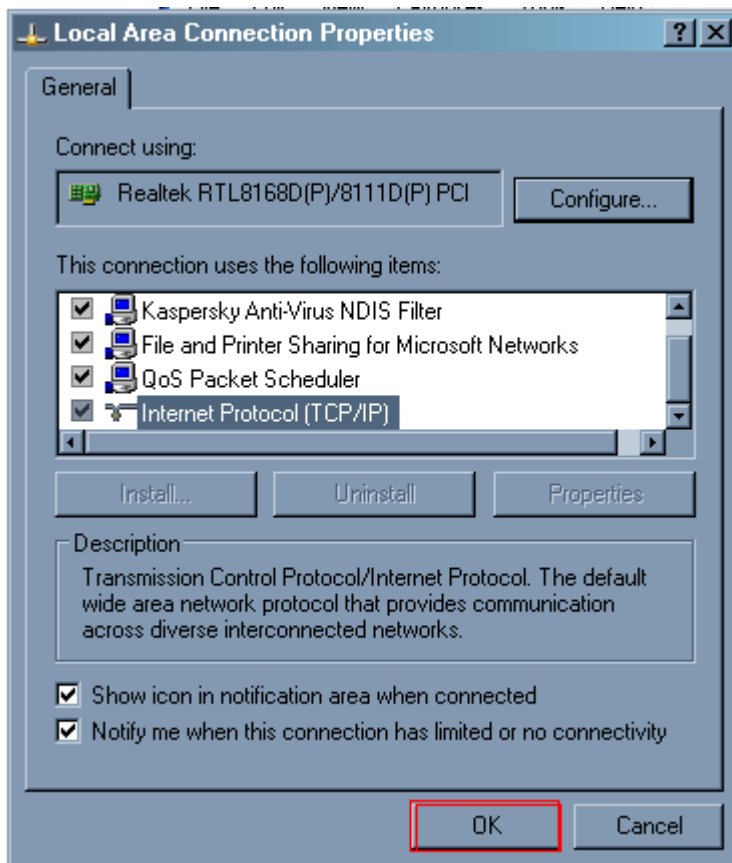
Apare fereastra **Internet Protocol TCP/IP Properties**

In fereastra care a aparut se alege optiunea:

Use the following IP address si optiunea *Use the following DNS server address* si se indica datela ca in screenul de mai jos:



Dupa introducerea datelor se apasa butonul **OK**



Inca odata se apasa **OK**

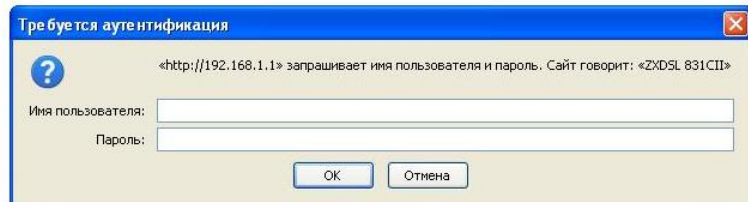
Deschideți Internet Explorer sau alt Browser.

În bara de adrese introduceți următoarele:

<http://192.168.1.1>

Tastați Enter.

Trebuie sa apara fereastra de login a modemului asemanatoare cu cea din imagine de mai jos:

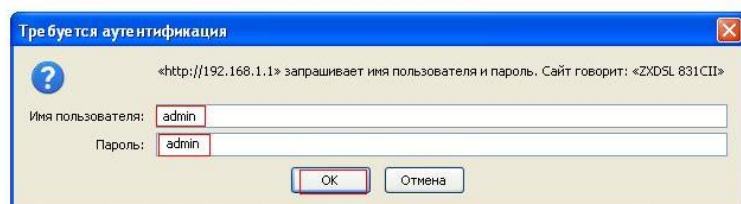
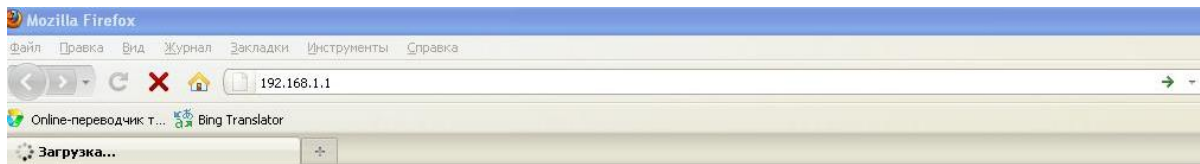


Va apărea forma de autorizare cu solicitarea Numelui de utilizator și parolei

Introduceți:

User Name: **admin**

Password: **admin**



Tastati butonul **OK**

Va apărea interfața configurării modemului

ZTE 中兴

Quick Start | Status | Advanced | Diagnose | Management

Language English

Device Info
ADSL Status
LAN Status
WAN Status
Routing Status
Statistics
ARP Table

Device Information

Product Name	ZXDSL 831CII
Software Version	ZXDSL 831CII V1.0.0a_Z38_OV
ADSL Firmware Version	FwVer:3.11.2.186_TC3086 HwVer:T14.F7_5.0
LAN IP Address	192.168.1.1
LAN Subnet Mask	255.255.255.0
MAC Address	00:25:12:c4:
Virtual Circuit	PVC0
Wan IP Address	N/A
Wan Subnet Mask	N/A
Default Gateway	N/A
Primary DNS Server	N/A
Secondary DNS Server	N/A

Pentru a vizualiza care PVC(virtual circuit) este necesar de configurat pentru internet si sa nu intilnim careva erori in configurare se acceseaza meniul **STATUS** dupa care pe stanga **WAN STATUS** trebuie sa apara urmatoarea imagine:

ZTE 中兴

Quick Start | Status | **Advanced** | Diagnose | Management

Language English

Device Info
ADSL Status
LAN Status
WAN Status
Routing Status
Statistics
ARP Table

Wan Connection

#	Active	VPI/VCI	ATM QoS	ENCAP	NAT	IP Address	Default Route	Status
PVC0	Yes	8/81	UBR	RFC 1483 LLC	Disabled	0.0.0.0	Disabled	N/A
PVC1	Yes	0/35	UBR	RFC 1483 LLC	Disabled	0.0.0.0	Disabled	N/A
PVC2	Yes	8/35	UBR	RFC 1483 LLC	Disabled	0.0.0.0	Disabled	N/A
PVC3	Yes	0/32	UBR	RFC 1483 LLC	Disabled	0.0.0.0	Disabled	N/A
PVC4	Yes	0/100	UBR	RFC 1483 LLC	Disabled	0.0.0.0	Disabled	N/A
PVC5	Yes	8/36	UBR	RFC 1483 LLC	Disabled	0.0.0.0	Disabled	N/A
PVC6	Yes	0/33	UBR	ENET ENCAP LLC	Enable	0.0.0.0	Enable	N/A
PVC7	-	-/-	-	-	-	-	-	-

In cazul nostru se configureaza PVC6 cum este aratat mai sus.

Cu mouseul aplicam functia **Advanced** dupa care se aplica pe stanga meniul **WAN** si se urmeaza pasii care sunt aratati ca in screenul de mai jos:

ZTE 中兴

Quick Start | Status | **Advanced** | Diagnose | Management

Language English

LAN
WAN
ADSL
NAT
Routing
QoS
Filter
VLAN
Firewall
UPnP
DDNS

ATM VC

Virtual Circuit: PVC6 PVCs Summary

Status: Activated Deactivated

VPI: 0 (Range: 0~255)

VCI: 33 (Range: 1~65535)

QoS

ATM QoS: LBR

PCR: 0 cells/second

SCR: 0 cells/second

MBS: 0 cells

Encapsulation

ISP: Dynamic IP Address
 Static IP Address
 PPPoA/PPPoE
 Bridge Mode

Dynamic IP

Encapsulation: 1483 Bridged IP LLC

Bridge Interface: Activated Deactivated

NAT: Enable

Default Route: Yes No

MTU Option: 1500 bytes(default:1500)

Dynamic Route: RIP2-B Direction Both

Multicast: Disabled

MAC Spoofing: Enabled Disabled
00:00:00:00:00:00

SAVE DELETE View WAN Status

Dupa toate setarile facute se aplica butonul **SAVE**