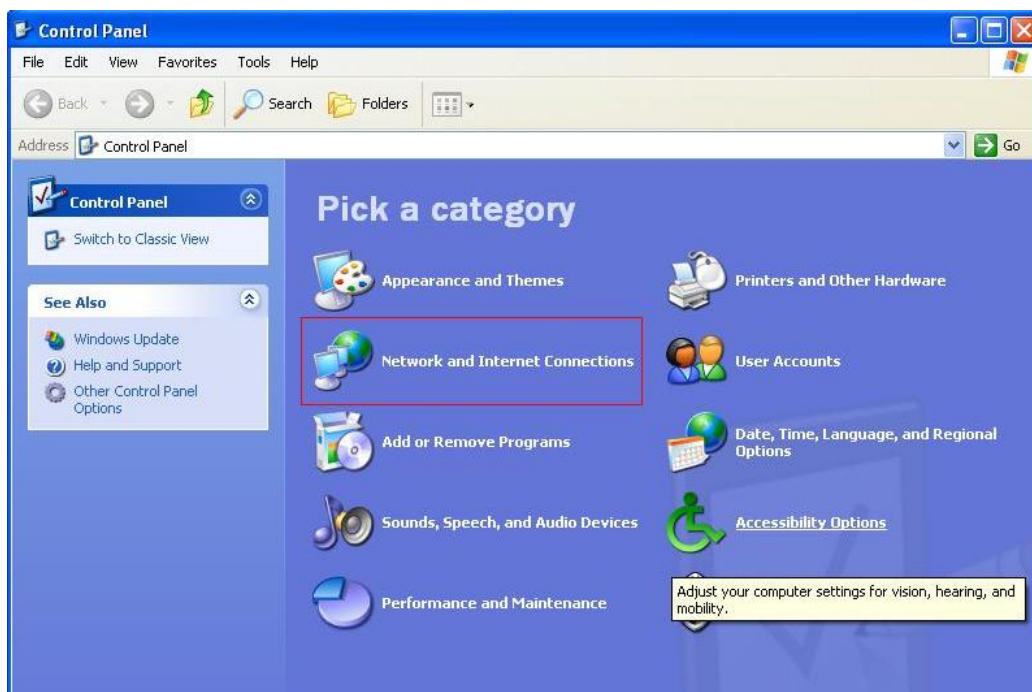


# Regim bridge

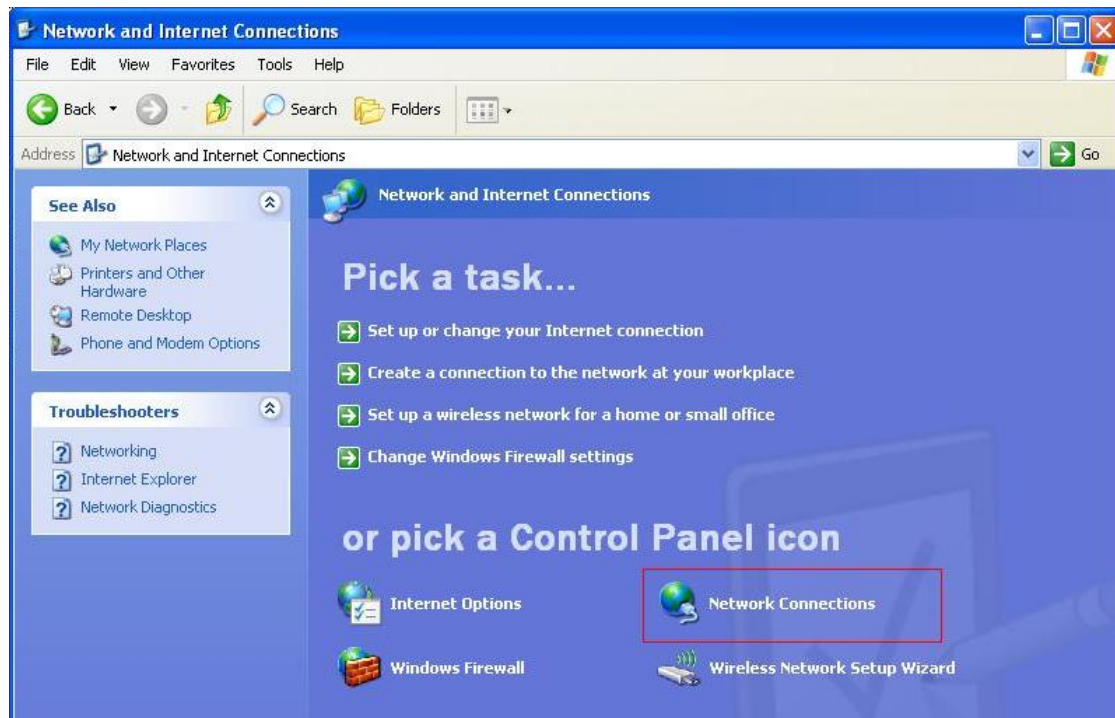
Se acceseaza meniul **START** dupa care **Control Panel**



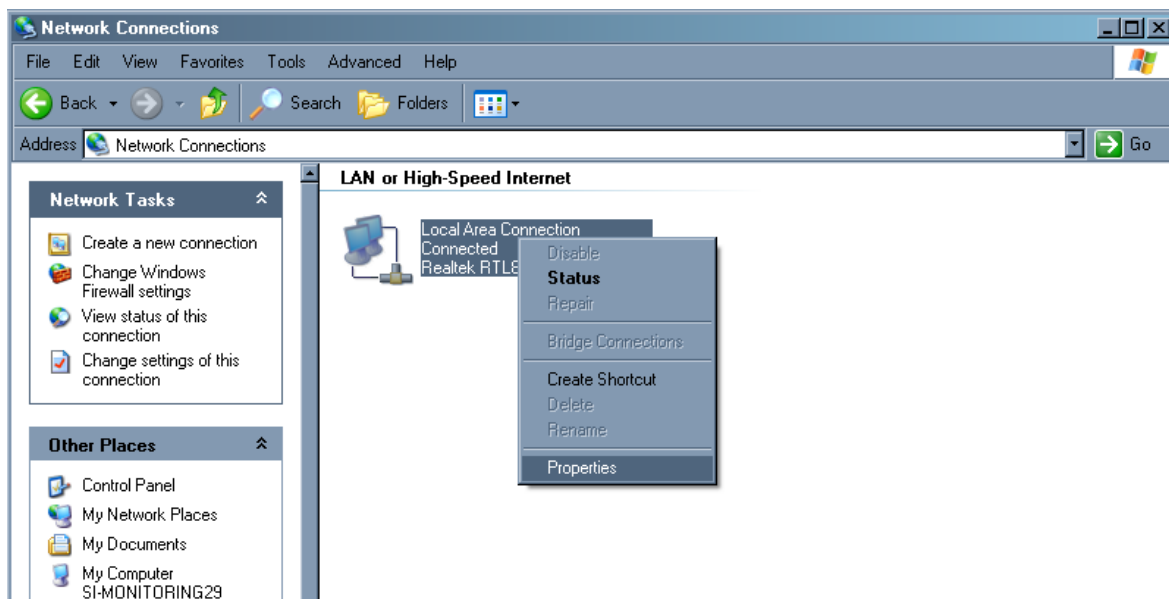
Se deschide fereastra Control Panel. Dupa asta se acceseaza **Network and Internet Connections**



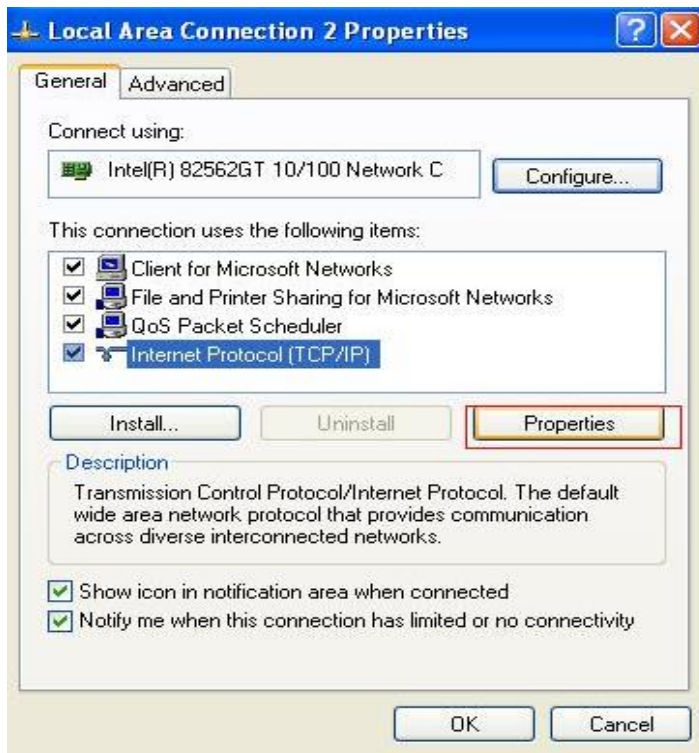
Din lista iconitelor Control panel se alege **Network Connections**



Apare fereastra Network Connections si aici se selecteaza **Local Area Connection** se apasa cu mouseul click dreapta dupa care **Properties** ca in imaginea care urmeaza:

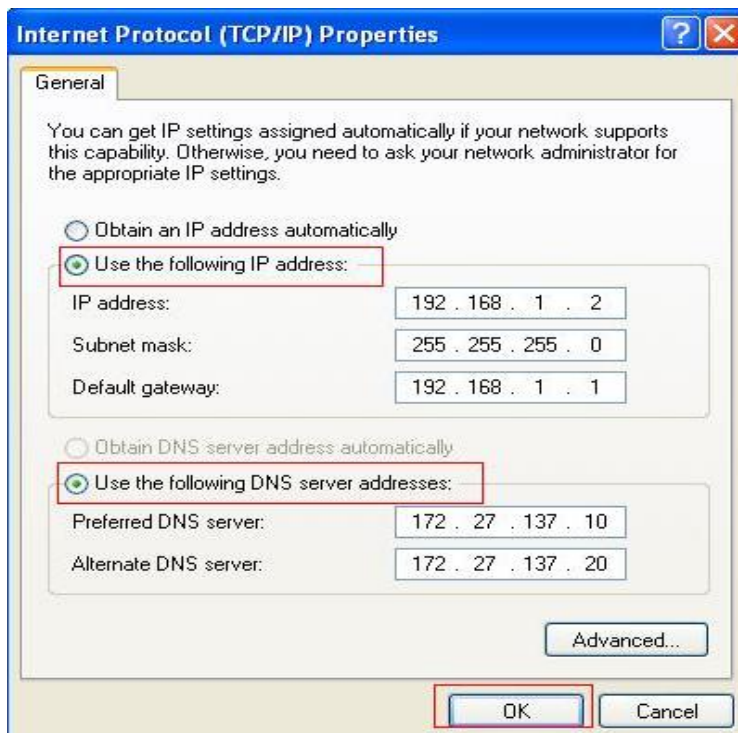


Dupa aceasta apare fereastra **Local Area Connection Properties**, aici se selecteaza optiunea **Internet Protocol (TCP/IP)** si se acceseaza butonul **Properties**

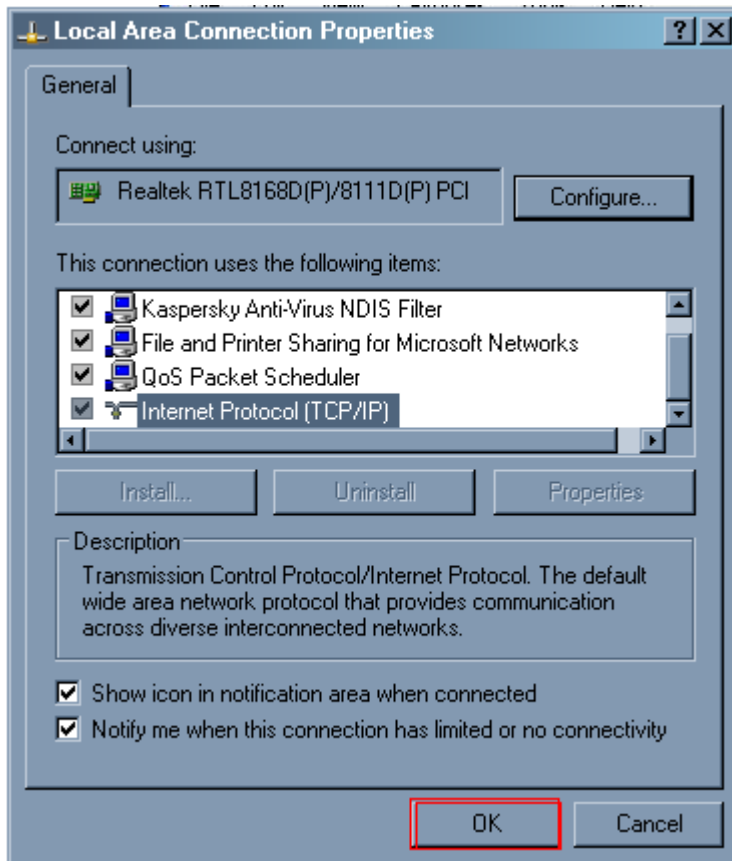


Apare fereastra **Internet Protocol TCP/IP Properties**

In fereastra care a aparut se alege optiunea: *Use the following IP address*



Dupa introducerea datelor se apasa butonul **OK**



Inca odata se apasa **OK**

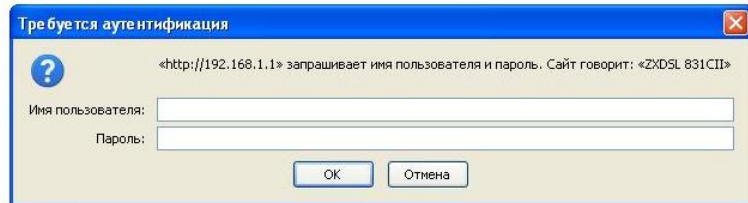
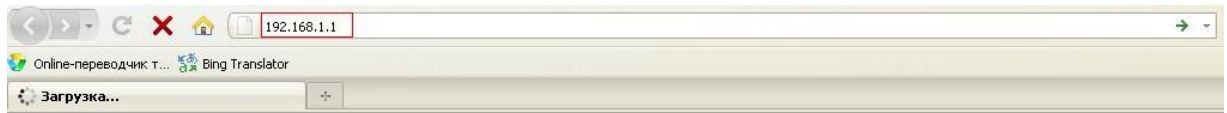
Deschideți Internet Explorer sau alt Browser.

În bara de adrese introduceți următoarele:

<http://192.168.1.1>

Tastați Enter.

Trebuie sa apara fereastra de login a modemului asemanatoare cu cea din imagine de mai jos:

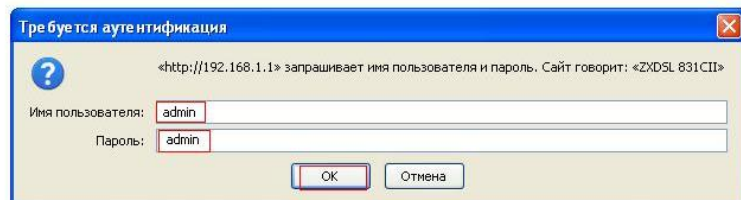
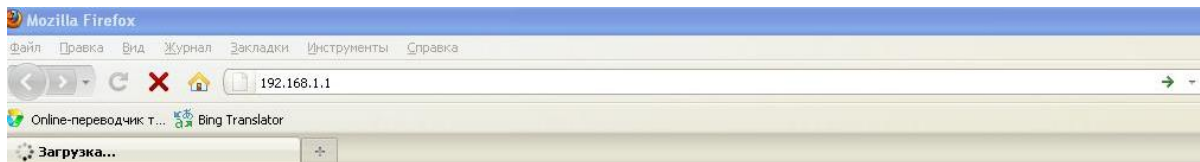


Va apărea forma de autorizare cu solicitarea Numelui de utilizator și parolei

Introduceți:

User Name: **admin**

Password: **admin**



Tastati butonul **OK**

Va apărea interfața configurării modemului

**ZTE** 中兴  
 Quick Start | Status | **Advanced** | Diagnose | Management  
 Language English

Device Info  
 ADSL Status  
 LAN Status  
 WAN Status  
 Routing Status  
 Statistics  
 ARP Table

**Device Information**

Product Name	ZXDSL 831CII
Software Version	ZXDSL 831CIV1.0.0a_Z38_OV
ADSL Firmware Version	FwVer:3.11.2.186_TC3086 HwVer:T14.F7_5.0
LAN IP Address	192.168.1.1
LAN Subnet Mask	255.255.255.0
MAC Address	00:25:12:c4:
Virtual Circuit	PVC0
Wan IP Address	N/A
Wan Subnet Mask	N/A
Default Gateway	N/A
Primary DNS Server	N/A
Secondary DNS Server	N/A

Pentru a vizualiza care PVC(virtual circuit) este necesar de configurat pentru internet si a nu intilnim careva erori in configurare se acceseaza meniul **STATUS** dupa care pe stanga **WAN STATUS** trebuie sa apara urmatoarea imagine:

**ZTE** 中兴  
 Quick Start | Status | **Advanced** | Diagnose | Management  
 Language English

Device Info  
 ADSL Status  
 LAN Status  
**WAN Status**  
 Routing Status  
 Statistics  
 ARP Table

**Wan Connection**

#	Active	VPI/VCI	ATM QoS	ENCAP	NAT	IP Address	Default Route	Status
PVC0	Yes	8/81	UBR	RFC 1483 LLC	Disabled	0.0.0.0	Disabled	N/A
PVC1	Yes	0/35	UBR	RFC 1483 LLC	Disabled	0.0.0.0	Disabled	N/A
PVC2	Yes	8/35	UBR	RFC 1483 LLC	Disabled	0.0.0.0	Disabled	N/A
PVC3	Yes	0/32	UBR	RFC 1483 LLC	Disabled	0.0.0.0	Disabled	N/A
PVC4	Yes	0/100	UBR	RFC 1483 LLC	Disabled	0.0.0.0	Disabled	N/A
PVC5	Yes	8/36	UBR	RFC 1483 LLC	Disabled	0.0.0.0	Disabled	N/A
PVC6	Yes	0/33	UBR	ENET ENCAP LLC	Enable	0.0.0.0	Enable	N/A
PVC7	-	-/-	-	-	-	-	-	-

In cazul nostru se configureaza PVC6 cum este aratat mai sus.

Cu mouseul aplicam functia **Advanced** dupa care se aplica pe stinga meniul **WAN** si se urmeaza pasii care sunt aratati ca in screenul de mai jos:

Modem ZTE CII se configureaza in regim de bridge(punte) acest regim se foloseste mai des cind abonatul are un PC

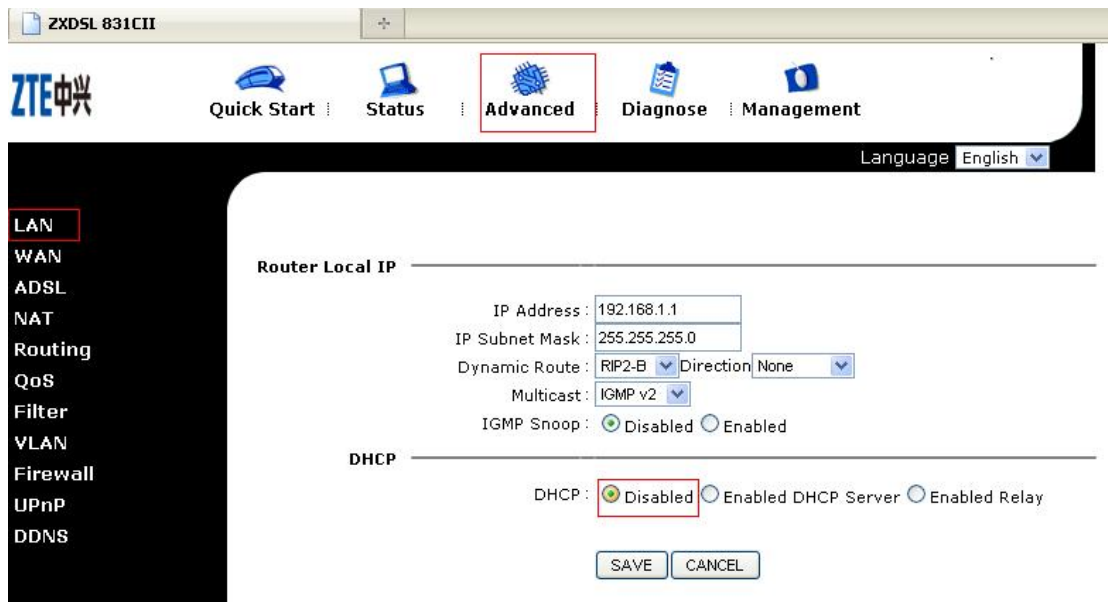
Se configureaza modemul ca in imaginea de mai jos urmind pasii indicati

The screenshot displays the configuration page for a ZTE ZXDSL 831CII modem. The interface includes a top navigation bar with 'Quick Start', 'Status', 'Advanced', 'Diagnose', and 'Management' tabs. A left sidebar lists various configuration categories: LAN, WAN, ADSL, NAT, Routing, QoS, Filter, VLAN, Firewall, UPnP, and DDNS. The 'WAN' tab is selected. The main configuration area is divided into sections: 'ATM VC' (Virtual Circuit: PVC6, Status: Activated, VPI: 0, VCI: 33), 'QoS' (ATM QoS: UBR, PCR: 0, SCR: 0, MBS: 0), 'Encapsulation' (ISP: Bridge Mode selected), and 'Bridge Mode' (Encapsulation: 1483 Bridged IP LLC). A 'SAVE' button is highlighted at the bottom.

Dupa toate setarile facute se aplica butonul **SAVE**

La setarile modemului ZTE CII regim bridge se recomanda de deconectat DHCP din setarile **Advanced** ->**LAN** cum este aratat in screenul care urmeaza :

Se aplica DHCP *Disabled* si se aplica SAVE



Dupa toate setarile facute se aplica butonul **SAVE**

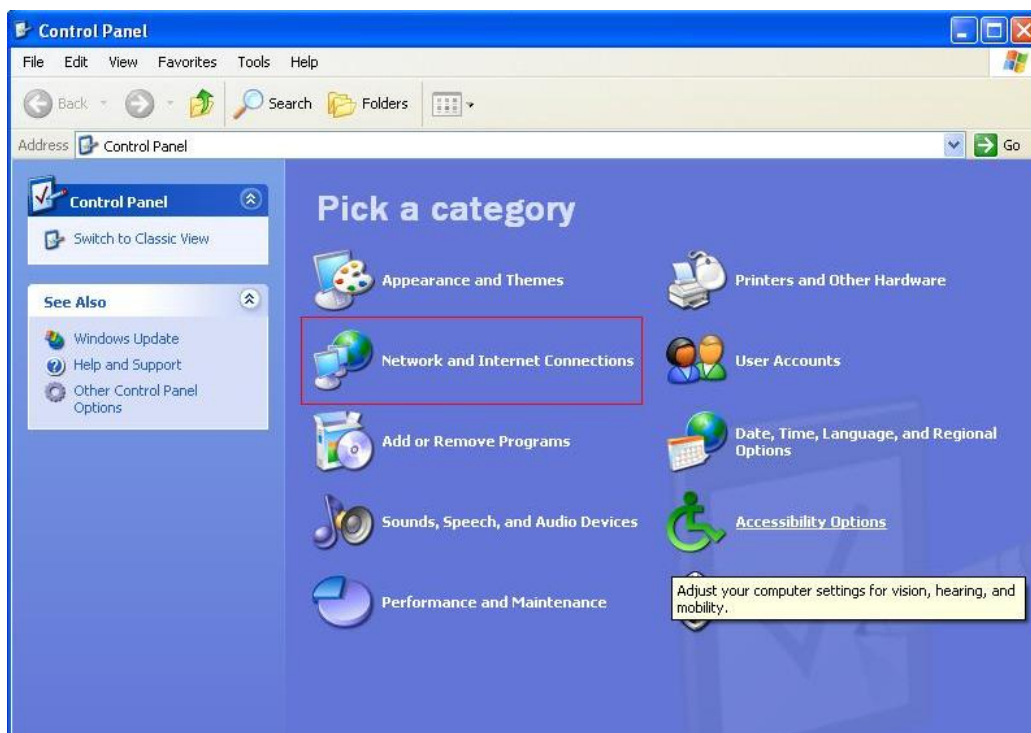
Dupa ce se salveaza setarile necesare .Punem adresele IP automate.

Se acceseaza meniul **START** dupa care **Control Panel**

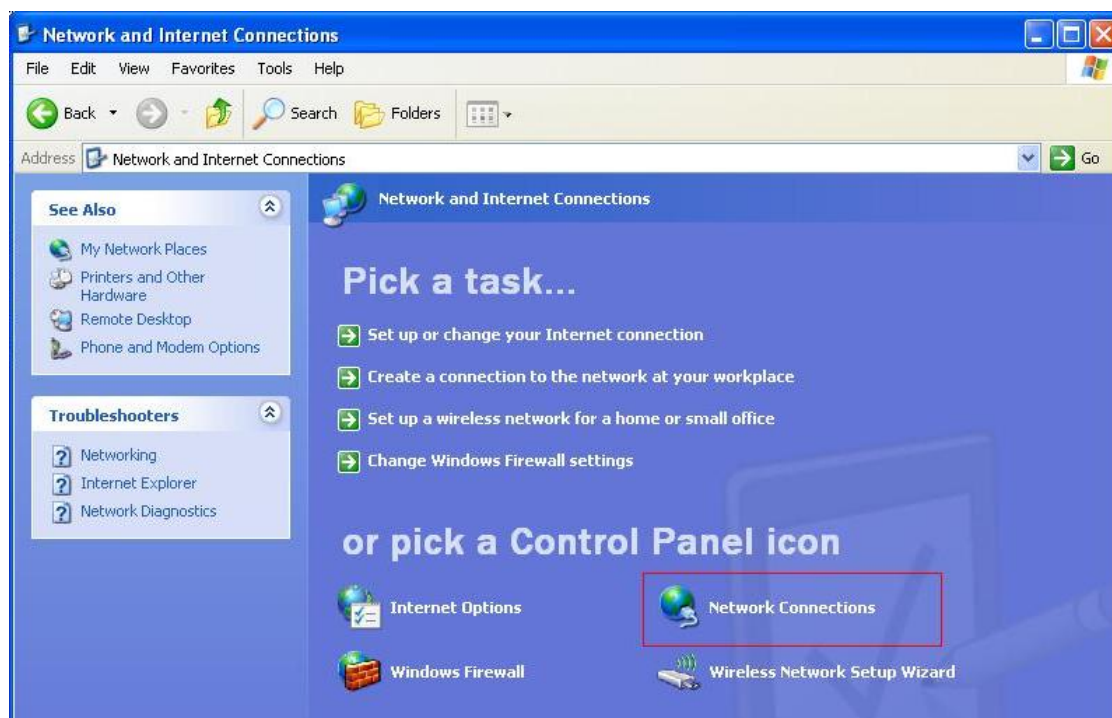




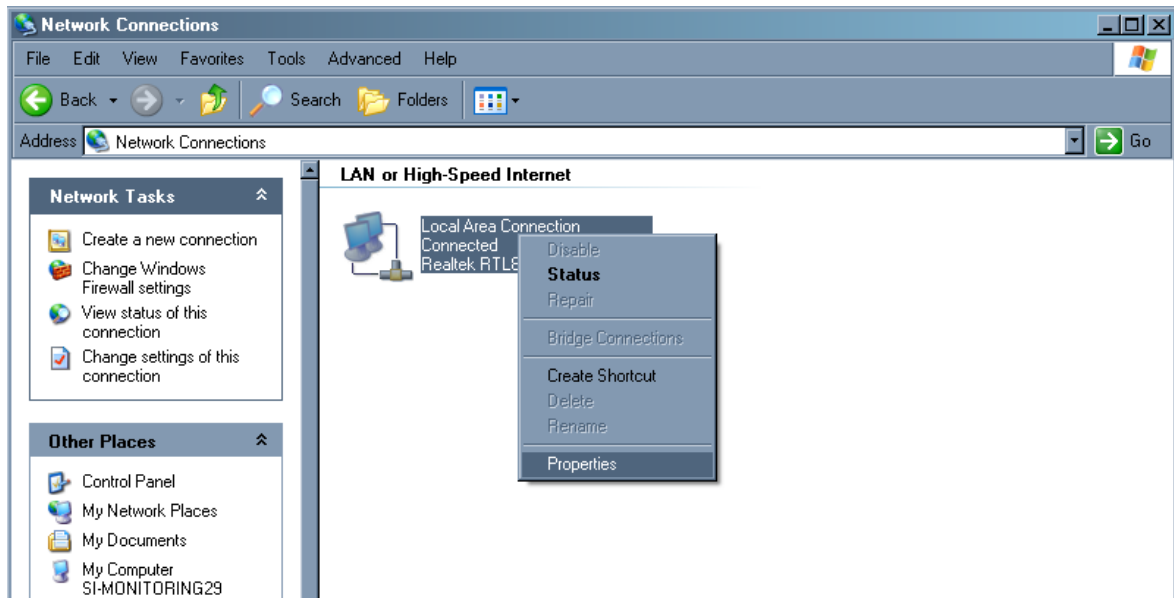
Se deschide fereastra Control Panel. Dupa asta se acceseaza **Network and Internet Connections**



Din lista iconitelor Control panel se alege **Network Connections**



Apare fereastra Network Connections si aici se selecteaza **Local Area Connection** se apasa cu mouseul click dreapta dupa care **Properties** ca in imaginea care urmeaza:



Dupa aceasta apare fereastra **Local Area Connection Properties**, aici se selecteaza optiunea **Internet Protocol (TCP/IP)** si se acceseaza butonul **Properties**



Apare fereastra **Internet Protocol TCP/IP Properties**

Alegem Obtiunea: **Obtain an IP address automatically**

The image shows a screenshot of the "Internet Protocol (TCP/IP) Properties" dialog box. The title bar is blue with a question mark and a close button. There are two tabs: "General" (selected) and "Alternate Configuration". The main area contains the following text: "You can get IP settings assigned automatically if your network supports this capability. Otherwise, you need to ask your network administrator for the appropriate IP settings." Below this, there are two radio button options. The first option, "Obtain an IP address automatically", is selected and highlighted with a red box. The second option, "Use the following IP address:", is unselected. Below the second option are three input fields for "IP address:", "Subnet mask:", and "Default gateway:". Below these fields, there are two more radio button options. The first option, "Obtain DNS server address automatically", is selected and highlighted with a red box. The second option, "Use the following DNS server addresses:", is unselected. Below the second option are two input fields for "Preferred DNS server:" and "Alternate DNS server:". At the bottom right of the main area is an "Advanced..." button. At the bottom of the dialog box are "OK" and "Cancel" buttons, with the "OK" button highlighted by a red box.

Internet Protocol (TCP/IP) Properties

General Alternate Configuration

You can get IP settings assigned automatically if your network supports this capability. Otherwise, you need to ask your network administrator for the appropriate IP settings.

Obtain an IP address automatically

Use the following IP address:

IP address:

Subnet mask:

Default gateway:

Obtain DNS server address automatically

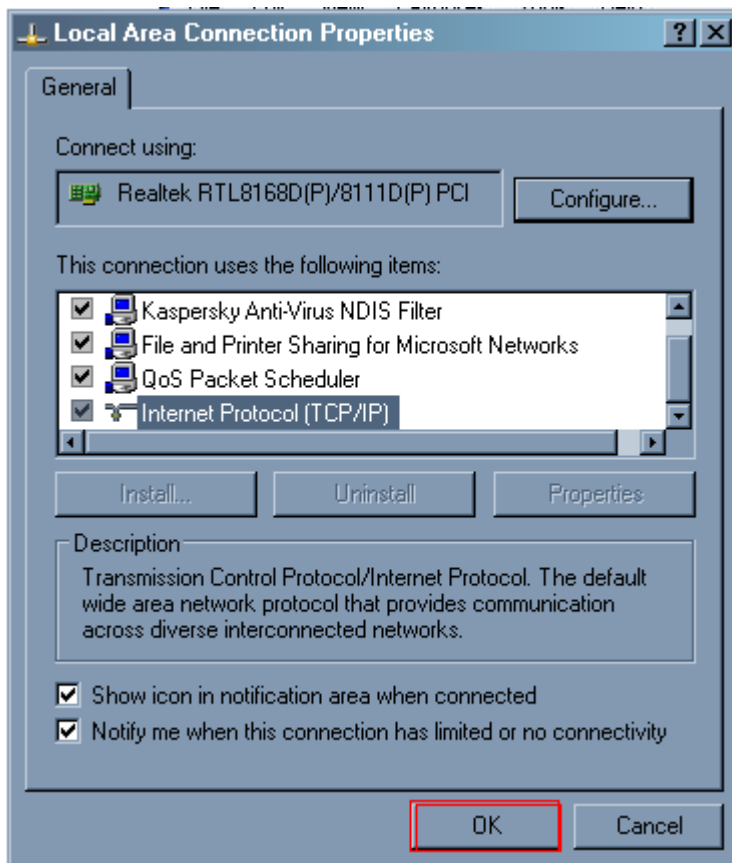
Use the following DNS server addresses:

Preferred DNS server:

Alternate DNS server:

Advanced...

OK Cancel



Inca odata se apasa **OK**